

**TPRA1 Antibody (N-Term)**  
**Purified Rabbit Polyclonal Antibody (Pab)**  
**Catalog # AP21977a**

**Specification**

---

**TPRA1 Antibody (N-Term) - Product Information**

Application	WB, FC,E
Primary Accession	<a href="#">Q86W33</a>
Reactivity	Human, Mouse
Host	Rabbit
Clonality	polyclonal
Isotype	Rabbit IgG
Calculated MW	41053

**TPRA1 Antibody (N-Term) - Additional Information**

**Gene ID** 131601

**Other Names**

Transmembrane protein adipocyte-associated 1, Integral membrane protein GPR175,  
Transmembrane protein 227, TPRA1, GPR175, TMEM227

**Target/Specificity**

This TPRA1 antibody is generated from a rabbit immunized with a KLH conjugated synthetic peptide between 16-47 amino acids from human TPRA1.

**Dilution**

WB~~1:2000  
FC~~1:25  
E~~Use at an assay dependent concentration.

**Format**

Purified polyclonal antibody supplied in PBS with 0.09% (W/V) sodium azide. This antibody is purified through a protein A column, followed by peptide affinity purification.

**Storage**

Maintain refrigerated at 2-8°C for up to 2 weeks. For long term storage store at -20°C in small aliquots to prevent freeze-thaw cycles.

**Precautions**

TPRA1 Antibody (N-Term) is for research use only and not for use in diagnostic or therapeutic procedures.

**TPRA1 Antibody (N-Term) - Protein Information**

**Name** TPRA1

**Synonyms** GPR175, TMEM227

**Cellular Location**

Membrane; Multi-pass membrane protein.

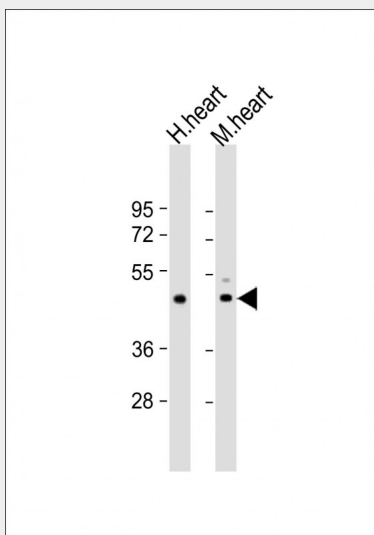
**Tissue Location**

Ubiquitous, with higher levels in heart, placenta and kidney.

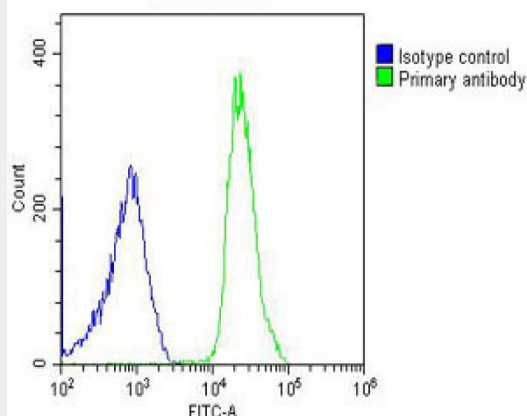
**TPRA1 Antibody (N-Term) - Protocols**

Provided below are standard protocols that you may find useful for product applications.

- [Western Blot](#)
- [Blocking Peptides](#)
- [Dot Blot](#)
- [Immunohistochemistry](#)
- [Immunofluorescence](#)
- [Immunoprecipitation](#)
- [Flow Cytometry](#)
- [Cell Culture](#)

**TPRA1 Antibody (N-Term) - Images**

All lanes : Anti-TPRA1 Antibody (N-Term) at 1:2000 dilution Lane 1: human heart lysate Lane 2: mouse heart lysate Lysates/proteins at 20 µg per lane. Secondary Goat Anti-Rabbit IgG, (H+L), Peroxidase conjugated at 1/10000 dilution. Predicted band size : 41 kDa Blocking/Dilution buffer: 5% NFDM/TBST.



Overlay histogram showing U-2OS cells stained with AP21977a (green line). The cells were fixed with 2% paraformaldehyde (10 min) and then permeabilized with 90% methanol for 10 min. The cells were then incubated in 2% bovine serum albumin to block non-specific protein-protein interactions followed by the antibody (AP21977a, 1:25 dilution) for 60 min at 37°C. The secondary antibody used was Goat-Anti-Rabbit IgG, DyLight® 488 Conjugated Highly Cross-Adsorbed(OH191631) at 1/200 dilution for 40 min at 37°C. Isotype control antibody (blue line) was rabbit IgG (1µg/1x10<sup>6</sup> cells) used under the same conditions. Acquisition of >10, 000 events was performed.

#### TPRA1 Antibody (N-Term) - References

Saito T.,et al.Submitted (JAN-2000) to the EMBL/GenBank/DDBJ databases.  
Wan D.,et al.Proc. Natl. Acad. Sci. U.S.A. 101:15724-15729(2004).  
Muzny D.M.,et al.Nature 440:1194-1198(2006).  
Mural R.J.,et al.Submitted (SEP-2005) to the EMBL/GenBank/DDBJ databases.  
Yang H.,et al.Endocrinology 140:2859-2867(1999).