

LLGL1 Antibody (N-term)
Purified Rabbit Polyclonal Antibody (Pab)
Catalog # AP2197a**Specification**

LLGL1 Antibody (N-term) - Product Information

Application	WB,E
Primary Accession	Q15334
Other Accession	Q8K4K5 , Q80Y17 , Q8MKF0
Reactivity	Human
Predicted	Bovine, Mouse, Rat
Host	Rabbit
Clonality	Polyclonal
Isotype	Rabbit IgG
Calculated MW	115418
Antigen Region	172-205

LLGL1 Antibody (N-term) - Additional Information**Gene ID** 3996**Other Names**

Lethal(2) giant larvae protein homolog 1, LLGL, DLG4, Hugl-1, Human homolog to the D-Igl gene protein, LLGL1, DLG4, HUGL, HUGL1

Target/Specificity

This LLGL1 antibody is generated from rabbits immunized with a KLH conjugated synthetic peptide between 172-205 amino acids from the N-terminal region of human LLGL1.

Dilution

WB~~1:1000

E~~Use at an assay dependent concentration.

Format

Purified polyclonal antibody supplied in PBS with 0.09% (W/V) sodium azide. This antibody is prepared by Saturated Ammonium Sulfate (SAS) precipitation followed by dialysis against PBS.

Storage

Maintain refrigerated at 2-8°C for up to 2 weeks. For long term storage store at -20°C in small aliquots to prevent freeze-thaw cycles.

Precautions

LLGL1 Antibody (N-term) is for research use only and not for use in diagnostic or therapeutic procedures.

LLGL1 Antibody (N-term) - Protein Information**Name** LLGL1

Synonyms DLG4, HUGL, HUGL1

Function Cortical cytoskeleton protein found in a complex involved in maintaining cell polarity and epithelial integrity. Involved in the regulation of mitotic spindle orientation, proliferation, differentiation and tissue organization of neuroepithelial cells. Involved in axonogenesis through RAB10 activation thereby regulating vesicular membrane trafficking toward the axonal plasma membrane.

Cellular Location

Early endosome membrane. Golgi apparatus, trans-Golgi network membrane. Golgi apparatus membrane. Cell projection, axon. Cytoplasm, cytoskeleton Note=Localized to the lateral membrane during the polarization and formation cell-cell contacts. Enriched in developing axons (By similarity).

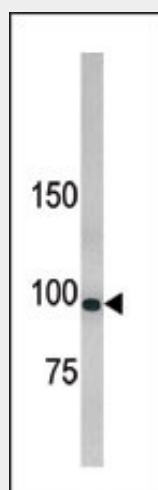
Tissue Location

Expressed in brain, kidney, and muscle but is barely seen in heart and placenta. Down-regulated or lost in all cell lines and in most of the tumor samples analyzed. Loss was associated with advanced stage of the disease.

LLGL1 Antibody (N-term) - Protocols

Provided below are standard protocols that you may find useful for product applications.

- [Western Blot](#)
- [Blocking Peptides](#)
- [Dot Blot](#)
- [Immunohistochemistry](#)
- [Immunofluorescence](#)
- [Immunoprecipitation](#)
- [Flow Cytometry](#)
- [Cell Culture](#)

LLGL1 Antibody (N-term) - Images

Western blot analysis of anti-hLLGL1 Pab (Cat. #AP2197a) in 293 cell line lysate. hLLGL1 (arrow) was detected using the purified Pab.

LLGL1 Antibody (N-term) - Background

LLGL1 is a protein that is similar to a tumor suppressor in *Drosophila*. The protein is part of a cytoskeletal network and is associated with nonmuscle myosin II heavy chain and a kinase that specifically phosphorylates this protein at serine residues. The gene for LLGL1 is located within the Smith-Magenis syndrome region on chromosome 17.

LLGL1 Antibody (N-term) - References

Schimanski, C.C., et al., *Oncogene* 24(19):3100-3109 (2005). Grifoni, D., et al., *Oncogene* 23(53):8688-8694 (2004). Katoh, M., et al., *Int. J. Oncol.* 24(3):737-742 (2004). Bi, W., et al., *Genome Res.* 12(5):713-728 (2002). Ludford-Menting, M.J., et al., *J. Biol. Chem.* 277(6):4477-4484 (2002).