

PPP2R4 Antibody (N-Term)
Purified Rabbit Polyclonal Antibody (Pab)
Catalog # AP21983a

Specification

PPP2R4 Antibody (N-Term) - Product Information

Application	WB,E
Primary Accession	Q15257
Reactivity	Human, Mouse
Host	Rabbit
Clonality	polyclonal
Isotype	Rabbit IgG
Calculated MW	40668

PPP2R4 Antibody (N-Term) - Additional Information

Gene ID 5524

Other Names

Serine/threonine-protein phosphatase 2A activator, 5.2.1.8, PP2A, subunit B', PR53 isoform, Phosphotyrosyl phosphatase activator, PTPA, Serine/threonine-protein phosphatase 2A regulatory subunit 4, Serine/threonine-protein phosphatase 2A regulatory subunit B', PPP2R4, PTPA

Target/Specificity

This PPP2R4 antibody is generated from a rabbit immunized with a KLH conjugated synthetic peptide between 3-35 amino acids from human PPP2R4.

Dilution

WB~~1:2000

E~~Use at an assay dependent concentration.

Format

Purified polyclonal antibody supplied in PBS with 0.09% (W/V) sodium azide. This antibody is purified through a protein A column, followed by peptide affinity purification.

Storage

Maintain refrigerated at 2-8°C for up to 2 weeks. For long term storage store at -20°C in small aliquots to prevent freeze-thaw cycles.

Precautions

PPP2R4 Antibody (N-Term) is for research use only and not for use in diagnostic or therapeutic procedures.

PPP2R4 Antibody (N-Term) - Protein Information

Name PTPA ([HGNC:9308](#))

Synonyms PPP2R4

Function PPlases accelerate the folding of proteins. It catalyzes the cis-trans isomerization of proline imidic peptide bonds in oligopeptides (By similarity). Acts as a regulatory subunit for serine/threonine-protein phosphatase 2A (PP2A) (PubMed:[16916641](#), PubMed:[36073231](#)). Modulates PP2A activity or substrate specificity, probably by inducing a conformational change in the catalytic subunit, a proposed direct target of the PPlase (PubMed:[16916641](#)). Can reactivate inactive phosphatase PP2A-phosphatase methylesterase complexes (PP2A(i)) in presence of ATP and Mg(2+) (By similarity). Reversibly stimulates the variable phosphotyrosyl phosphatase activity of PP2A core heterodimer PP2A(D) in presence of ATP and Mg(2+) (in vitro) (PubMed:[16916641](#)). The phosphotyrosyl phosphatase activity is dependent of an ATPase activity of the PP2A(D):PPP2R4 complex (PubMed:[16916641](#)). Is involved in apoptosis; the function appears to be independent from PP2A (PubMed:[17333320](#)).

Cellular Location

Cytoplasm. Nucleus

Tissue Location

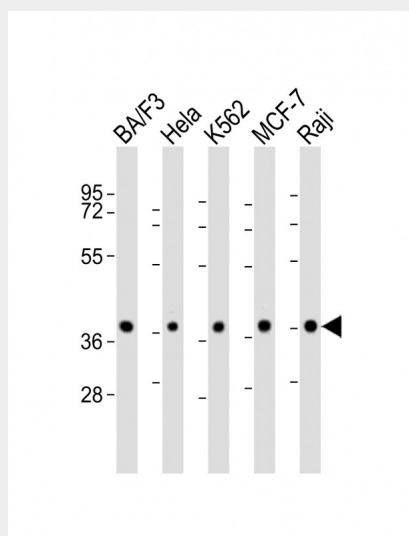
Widely expressed.

PPP2R4 Antibody (N-Term) - Protocols

Provided below are standard protocols that you may find useful for product applications.

- [Western Blot](#)
- [Blocking Peptides](#)
- [Dot Blot](#)
- [Immunohistochemistry](#)
- [Immunofluorescence](#)
- [Immunoprecipitation](#)
- [Flow Cytometry](#)
- [Cell Culture](#)

PPP2R4 Antibody (N-Term) - Images



All lanes : Anti-PPP2R4 Antibody (N-Term) at 1:2000 dilution Lane 1: BA/F3 whole cell lysate Lane 2: HeLa whole cell lysate Lane 3: K562 whole cell lysate Lane 4: MCF-7 whole cell lysate Lane 5: Raji whole cell lysate Lysates/proteins at 20 µg per lane. Secondary Goat Anti-Rabbit IgG, (H+L), Peroxidase conjugated at 1/10000 dilution. Predicted band size : 41 kDa Blocking/Dilution buffer:

5% NFDM/TBST.

PPP2R4 Antibody (N-Term) - Background

PPlases accelerate the folding of proteins. It catalyzes the cis-trans isomerization of proline imidic peptide bonds in oligopeptides. Acts as a regulatory subunit for serine/threonine- protein phosphatase 2A (PP2A) modulating its activity or substrate specificity, probably by inducing a conformational change in the catalytic subunit, a proposed direct target of the PPlase. Can reactivate inactive phosphatase PP2A-phosphatase methylesterase complexes (PP2A(i)) in presence of ATP and Mg(2+) (By similarity). Reversibly stimulates the variable phosphotyrosyl phosphatase activity of PP2A core heterodimer PP2A(D) in presence of ATP and Mg(2+) (in vitro). The phosphotyrosyl phosphatase activity is dependent of an ATPase activity of the PP2A(D):PPP2R4 complex. Is involved in apoptosis; the function appears to be independent from PP2A.

PPP2R4 Antibody (N-Term) - References

Cayla X.,et al.J. Biol. Chem. 269:15668-15675(1994).
Van Hoof C.,et al.Genomics 28:261-272(1995).
Janssens V.,et al.Eur. J. Biochem. 267:4406-4413(2000).
Ota T.,et al.Nat. Genet. 36:40-45(2004).
Kalnine N.,et al.Submitted (OCT-2004) to the EMBL/GenBank/DDBJ databases.