

AAAS Antibody (C-Term)
Purified Rabbit Polyclonal Antibody (Pab)
Catalog # AP21984b**Specification**

AAAS Antibody (C-Term) - Product Information

Application	WB,E
Primary Accession	Q9NRG9
Reactivity	Human
Host	Rabbit
Clonality	polyclonal
Isotype	Rabbit IgG
Calculated MW	59574

AAAS Antibody (C-Term) - Additional Information**Gene ID** 8086**Other Names**

Aladin, Adracalin, AAAS, ADRACALA

Target/Specificity

This AAAS antibody is generated from a rabbit immunized with a KLH conjugated synthetic peptide between 395-425 amino acids from human AAAS.

Dilution

WB ~ 1:2000

E ~ Use at an assay dependent concentration.

Format

Purified polyclonal antibody supplied in PBS with 0.09% (W/V) sodium azide. This antibody is purified through a protein A column, followed by peptide affinity purification.

Storage

Maintain refrigerated at 2-8°C for up to 2 weeks. For long term storage store at -20°C in small aliquots to prevent freeze-thaw cycles.

Precautions

AAAS Antibody (C-Term) is for research use only and not for use in diagnostic or therapeutic procedures.

AAAS Antibody (C-Term) - Protein Information**Name** AAAS**Synonyms** ADRACALA**Function** Plays a role in the normal development of the peripheral and central nervous system

(PubMed:[11062474](#), PubMed:[11159947](#), PubMed:[16022285](#)). Required for the correct localization of aurora kinase AURKA and the microtubule minus end-binding protein NUMA1 as well as a subset of AURKA targets which ensures proper spindle formation and timely chromosome alignment (PubMed:[26246606](#)).

Cellular Location

Nucleus, nuclear pore complex. Cytoplasm, cytoskeleton, spindle pole. Nucleus envelope. Note=In metaphase cells localizes within the spindle with some accumulation around spindle poles, with the highest concentration between the centrosome and metaphase plate (PubMed:[26246606](#)). The localization to the spindle is microtubule- mediated (PubMed:[26246606](#)).

Tissue Location

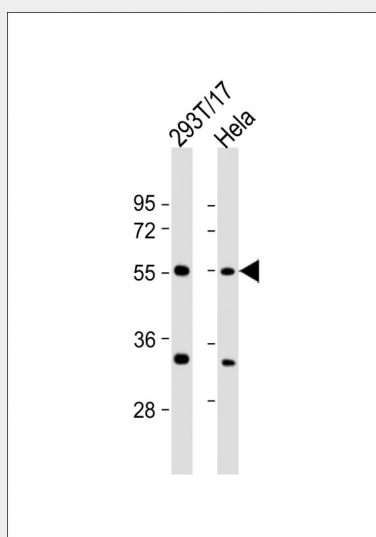
Widely expressed (PubMed:[11159947](#), PubMed:[16022285](#)). Particularly abundant in cerebellum, corpus callosum, adrenal gland, pituitary gland, gastrointestinal structures and fetal lung (PubMed:[11159947](#)).

AAAS Antibody (C-Term) - Protocols

Provided below are standard protocols that you may find useful for product applications.

- [Western Blot](#)
- [Blocking Peptides](#)
- [Dot Blot](#)
- [Immunohistochemistry](#)
- [Immunofluorescence](#)
- [Immunoprecipitation](#)
- [Flow Cytometry](#)
- [Cell Culture](#)

AAAS Antibody (C-Term) - Images



All lanes : Anti-AAAS Antibody (C-Term) at 1:2000 dilution Lane 1: 293T/17 whole cell lysate Lane 2: HeLa whole cell lysate Lysates/proteins at 20 µg per lane. Secondary Goat Anti-Rabbit IgG, (H+L), Peroxidase conjugated at 1/10000 dilution. Predicted band size : 60 kDa Blocking/Dilution buffer: 5% NFDM/TBST.

AAAS Antibody (C-Term) - Background

Plays a role in the normal development of the peripheral and central nervous system.

AAAS Antibody (C-Term) - References

Tullio-Pelet A.,et al.Nat. Genet. 26:332-335(2000).
Handschug K.,et al.Hum. Mol. Genet. 10:283-290(2001).
Li X.,et al.Mol. Biol. Rep. 32:127-131(2005).
Li Y.,et al.Submitted (JAN-2000) to the EMBL/GenBank/DDBJ databases.
Ota T.,et al.Nat. Genet. 36:40-45(2004).