

**TPD52 Antibody (C-Term)**  
**Purified Rabbit Polyclonal Antibody (Pab)**  
**Catalog # AP21991b****Specification**

---

**TPD52 Antibody (C-Term) - Product Information**

Application	WB,E
Primary Accession	<a href="#">P55327</a>
Reactivity	Human
Host	Rabbit
Clonality	polyclonal
Isotype	Rabbit IgG
Calculated MW	24327

**TPD52 Antibody (C-Term) - Additional Information****Gene ID** 7163**Other Names**

Tumor protein D52, Protein N8, TPD52

**Target/Specificity**

This TPD52 antibody is generated from a rabbit immunized with a KLH conjugated synthetic peptide between 193-223 amino acids from human TPD52.

**Dilution**

WB~~1:2000

E~~Use at an assay dependent concentration.

**Format**

Purified polyclonal antibody supplied in PBS with 0.09% (W/V) sodium azide. This antibody is purified through a protein A column, followed by peptide affinity purification.

**Storage**

Maintain refrigerated at 2-8°C for up to 2 weeks. For long term storage store at -20°C in small aliquots to prevent freeze-thaw cycles.

**Precautions**

TPD52 Antibody (C-Term) is for research use only and not for use in diagnostic or therapeutic procedures.

**TPD52 Antibody (C-Term) - Protein Information****Name** TPD52**Tissue Location**

Isoform 2 is expressed in colon, breast, prostate, pancreas and kidney tumor cell lines. Isoform 2 is expressed at high levels in kidney, prostate, brain, small intestine and pancreas, at moderate

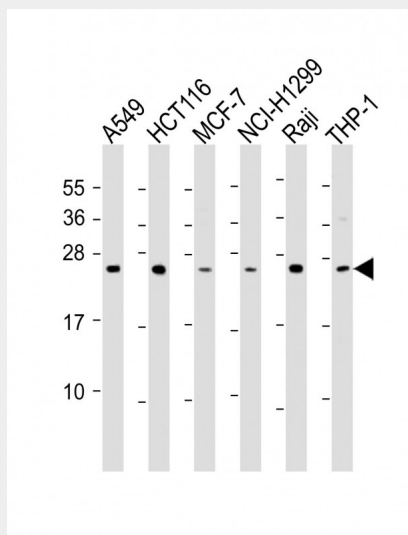
levels in placenta and colon, at low levels in lung, liver and heart, and at very low levels in spleen, thymus, peripheral mononuclear blood cells, testis and ovary.

### TPD52 Antibody (C-Term) - Protocols

Provided below are standard protocols that you may find useful for product applications.

- [Western Blot](#)
- [Blocking Peptides](#)
- [Dot Blot](#)
- [Immunohistochemistry](#)
- [Immunofluorescence](#)
- [Immunoprecipitation](#)
- [Flow Cytometry](#)
- [Cell Culture](#)

### TPD52 Antibody (C-Term) - Images



All lanes : Anti-TPD52 Antibody (C-Term) at 1:2000 dilution Lane 1: A549 whole cell lysate Lane 2: HCT116 whole cell lysate Lane 3: MCF-7 whole cell lysate Lane 4: NCI-H1299 whole cell lysate Lane 5: Raji whole cell lysate Lane 6: THP-1 whole cell lysate Lysates/proteins at 20 µg per lane. Secondary Goat Anti-Rabbit IgG, (H+L), Peroxidase conjugated at 1/10000 dilution. Predicted band size : 24 kDa Blocking/Dilution buffer: 5% NFDM/TBST.

### TPD52 Antibody (C-Term) - References

- Byrne J.A.,et al.Cancer Res. 55:2896-2903(1995).  
Chen S.-L.,et al.Oncogene 12:741-751(1996).  
Wang R.,et al.Cancer Res. 64:1589-1594(2004).  
Wang R.,et al.Biochem. Biophys. Res. Commun. 389:455-460(2009).  
Ota T.,et al.Nat. Genet. 36:40-45(2004).