

LLGL2 Antibody (N-term)
Purified Rabbit Polyclonal Antibody (Pab)
Catalog # AP2199b**Specification**

LLGL2 Antibody (N-term) - Product Information

Application	WB,E
Primary Accession	Q6P1M3
Other Accession	Q3TJ91
Reactivity	Human
Predicted	Mouse
Host	Rabbit
Clonality	Polyclonal
Isotype	Rabbit IgG
Calculated MW	113448
Antigen Region	165-199

LLGL2 Antibody (N-term) - Additional Information**Gene ID** 3993**Other Names**

Lethal(2) giant larvae protein homolog 2, HGL, LLGL2

Target/Specificity

This LLGL2 antibody is generated from rabbits immunized with a KLH conjugated synthetic peptide between 165-199 amino acids from the N-terminal region of human LLGL2.

Dilution

WB~~1:2000

E~~Use at an assay dependent concentration.

Format

Purified polyclonal antibody supplied in PBS with 0.09% (W/V) sodium azide. This antibody is prepared by Saturated Ammonium Sulfate (SAS) precipitation followed by dialysis against PBS.

Storage

Maintain refrigerated at 2-8°C for up to 2 weeks. For long term storage store at -20°C in small aliquots to prevent freeze-thaw cycles.

Precautions

LLGL2 Antibody (N-term) is for research use only and not for use in diagnostic or therapeutic procedures.

LLGL2 Antibody (N-term) - Protein Information**Name** LLGL2

Function Part of a complex with GPSM2/LGN, PRKCI/aPKC and PARD6B/Par- 6, which may ensure the correct organization and orientation of bipolar spindles for normal cell division. This complex plays roles in the initial phase of the establishment of epithelial cell polarity.

Cellular Location

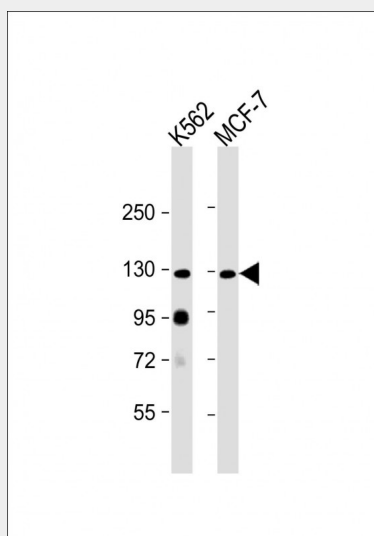
Cytoplasm. Note=Localized in the perinuclear structure and faintly at the cell- cell contacts sites in the interphase. Localized at the cell periphery during metaphase. Cortical localization in mitotic cells. Found in the lateral region of polarized epithelial cells

LLGL2 Antibody (N-term) - Protocols

Provided below are standard protocols that you may find useful for product applications.

- [Western Blot](#)
- [Blocking Peptides](#)
- [Dot Blot](#)
- [Immunohistochemistry](#)
- [Immunofluorescence](#)
- [Immunoprecipitation](#)
- [Flow Cytometry](#)
- [Cell Culture](#)

LLGL2 Antibody (N-term) - Images



All lanes : Anti-hLLGL2-E180 at 1:2000 dilution Lane 1: K562 whole cell lysate Lane 2: MCF-7 whole cell lysate Lysates/proteins at 20 µg per lane. Secondary Goat Anti-Rabbit IgG, (H+L), Peroxidase conjugated at 1/10000 dilution. Predicted band size : 113 kDa Blocking/Dilution buffer: 5% NFDM/TBST.

LLGL2 Antibody (N-term) - Background

The lethal (2) giant larvae protein of *Drosophila* plays a role in asymmetric cell division, epithelial cell polarity, and cell migration. LLGL2 is a protein similar to lethal (2) giant larvae of *Drosophila*. In fly, the protein's ability to localize cell fate determinants is regulated by the atypical protein kinase C (aPKC). In human, this protein interacts with aPKC-containing complexes and is cortically localized in mitotic cells.

LLGL2 Antibody (N-term) - References

Yasumi, M., et al., J. Biol. Chem. 280(8):6761-6765 (2005). Katoh, M., et al., Int. J. Oncol. 24(3):737-742 (2004).