

**PDE2A Antibody (C-Term)**  
**Purified Rabbit Polyclonal Antibody (Pab)**  
**Catalog # AP22001b**

**Specification**

---

**PDE2A Antibody (C-Term) - Product Information**

Application	WB,E
Primary Accession	<a href="#">O922S4</a>
Other Accession	<a href="#">P14099</a> , <a href="#">Q0106</a> , <a href="#">Q00408</a> , <a href="#">Q01062</a>
Reactivity	Mouse
Predicted	Bovine, Human, Rat
Host	Rabbit
Clonality	polyclonal
Isotype	Rabbit IgG

**PDE2A Antibody (C-Term) - Additional Information**

**Gene ID** 207728

**Other Names**

cGMP-dependent 3', 5'-cyclic phosphodiesterase, 3.1.4.17, Cyclic GMP-stimulated phosphodiesterase, CGS-PDE, cGSPDE, PDE2A

**Target/Specificity**

This PDE2A antibody is generated from a rabbit immunized with a KLH conjugated synthetic peptide between 780-810 amino acids of mouse PDE2A.

**Dilution**

WB~~1:2000

**Format**

Purified polyclonal antibody supplied in PBS with 0.09% (W/V) sodium azide. This antibody is purified through a protein A column, followed by peptide affinity purification.

**Storage**

Maintain refrigerated at 2-8°C for up to 2 weeks. For long term storage store at -20°C in small aliquots to prevent freeze-thaw cycles.

**Precautions**

PDE2A Antibody (C-Term) is for research use only and not for use in diagnostic or therapeutic procedures.

**PDE2A Antibody (C-Term) - Protein Information**

**Name** Pde2a {ECO:0000312|MGI:MGI:2446107}

**Function** cGMP-activated cyclic nucleotide phosphodiesterase with a dual-specificity for the second messengers cAMP and cGMP, which are key regulators of many important physiological

processes (PubMed:[21724846](#)). Has a higher efficiency with cGMP compared to cAMP (By similarity). Plays a role in cell growth and migration (By similarity).

#### Cellular Location

[Isoform PDE2A1]: Cytoplasm {ECO:0000250|UniProtKB:O00408} [Isoform PDE2A3]: Cell membrane {ECO:0000250|UniProtKB:O00408}; Lipid-anchor {ECO:0000250|UniProtKB:O00408}

#### Tissue Location

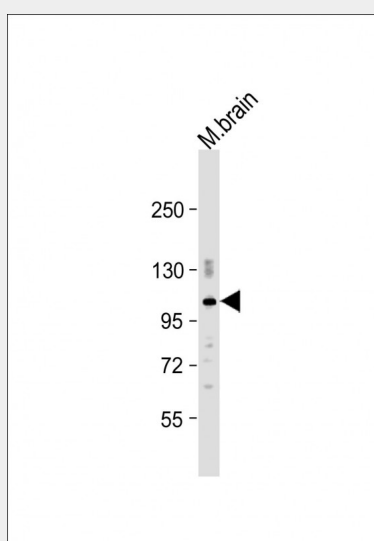
[Isoform PDE2A2]: Expressed in brain and liver (at protein level).

### PDE2A Antibody (C-Term) - Protocols

Provided below are standard protocols that you may find useful for product applications.

- [Western Blot](#)
- [Blocking Peptides](#)
- [Dot Blot](#)
- [Immunohistochemistry](#)
- [Immunofluorescence](#)
- [Immunoprecipitation](#)
- [Flow Cytometry](#)
- [Cell Culture](#)

### PDE2A Antibody (C-Term) - Images



Anti-PDE2A Antibody (C-Term) at 1:2000 dilution + mouse brain lysate Lysates/proteins at 20 µg per lane. Secondary Goat Anti-Rabbit IgG, (H+L), Peroxidase conjugated at 1/10000 dilution. Predicted band size : 106 kDa Blocking/Dilution buffer: 5% NFDM/TBST.

### PDE2A Antibody (C-Term) - Background

Cyclic nucleotide phosphodiesterase with a dual- specificity for the second messengers cAMP and cGMP, which are key regulators of many important physiological processes.

### PDE2A Antibody (C-Term) - References

Rosman G.J.,et al.Gene 191:89-95(1997).

Bugaj-Gaweda B.,et al.Submitted (DEC-2003) to the EMBL/GenBank/DDBJ databases.

Ota T.,et al.Nat. Genet. 36:40-45(2004).

Taylor T.D.,et al.Nature 440:497-500(2006).

Russwurm C.,et al.J. Biol. Chem. 284:25782-25790(2009).