

PGLYRP2 Antibody (N-Term)
Purified Rabbit Polyclonal Antibody (Pab)
Catalog # AP22007a

Specification

PGLYRP2 Antibody (N-Term) - Product Information

Application	WB,E
Primary Accession	Q96PD5
Reactivity	Human
Host	Rabbit
Clonality	polyclonal
Isotype	Rabbit IgG
Calculated MW	62217

PGLYRP2 Antibody (N-Term) - Additional Information

Gene ID 114770

Other Names

N-acetylmuramoyl-L-alanine amidase, 3.5.1.28, Peptidoglycan recognition protein 2, Peptidoglycan recognition protein long, PGRP-L, PGLYRP2, PGLYRPL, PGRPL

Target/Specificity

This PGLYRP2 antibody is generated from a rabbit immunized with a KLH conjugated synthetic peptide between 75-107 amino acids from human PGLYRP2.

Dilution

WB~~1:2000

E~~Use at an assay dependent concentration.

Format

Purified polyclonal antibody supplied in PBS with 0.09% (W/V) sodium azide. This antibody is purified through a protein A column, followed by peptide affinity purification.

Storage

Maintain refrigerated at 2-8°C for up to 2 weeks. For long term storage store at -20°C in small aliquots to prevent freeze-thaw cycles.

Precautions

PGLYRP2 Antibody (N-Term) is for research use only and not for use in diagnostic or therapeutic procedures.

PGLYRP2 Antibody (N-Term) - Protein Information

Name PGLYRP2

Synonyms PGLYRPL, PGRPL

Function May play a scavenger role by digesting biologically active peptidoglycan (PGN) into biologically inactive fragments. Has no direct bacteriolytic activity.

Cellular Location

Secreted. Membrane.

Tissue Location

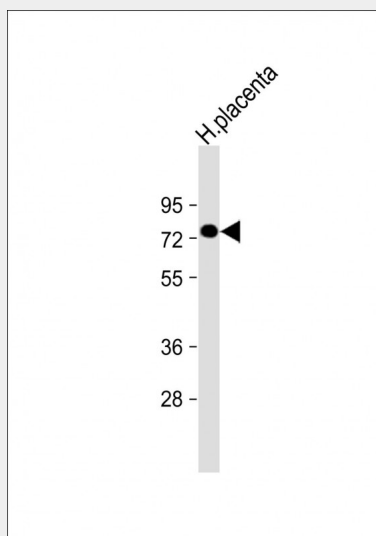
Strongly expressed in liver and fetal liver, and secreted into serum. Expressed to a much lesser extent in transverse colon, lymph nodes, heart, thymus, pancreas, descending colon, stomach and testis. Isoform 2 is not detected in the liver or serum

PGLYRP2 Antibody (N-Term) - Protocols

Provided below are standard protocols that you may find useful for product applications.

- [Western Blot](#)
- [Blocking Peptides](#)
- [Dot Blot](#)
- [Immunohistochemistry](#)
- [Immunofluorescence](#)
- [Immunoprecipitation](#)
- [Flow Cytometry](#)
- [Cell Culture](#)

PGLYRP2 Antibody (N-Term) - Images



Anti-PGLYRP2 Antibody (N-Term) at 1:2000 dilution + human placenta lysate Lysates/proteins at 20 µg per lane. Secondary Goat Anti-Rabbit IgG, (H+L), Peroxidase conjugated at 1/10000 dilution. Predicted band size : 62 kDa Blocking/Dilution buffer: 5% NFDM/TBST.

PGLYRP2 Antibody (N-Term) - Background

May play a scavenger role by digesting biologically active peptidoglycan (PGN) into biologically inactive fragments. Has no direct bacteriolytic activity.

PGLYRP2 Antibody (N-Term) - References

Liu C.,et al.J. Biol. Chem. 276:34686-34694(2001).
Yamada S.,et al.Oncogene 23:5901-5911(2004).
Clark H.F.,et al.Genome Res. 13:2265-2270(2003).
Ota T.,et al.Nat. Genet. 36:40-45(2004).
Mural R.J.,et al.Submitted (JUL-2005) to the EMBL/GenBank/DDBJ databases.