

**MTUS1 Antibody (C-Term)**  
**Purified Rabbit Polyclonal Antibody (Pab)**  
**Catalog # AP22012b****Specification**

---

**MTUS1 Antibody (C-Term) - Product Information**

Application	WB,E
Primary Accession	<a href="#">O9ULD2</a>
Other Accession	<a href="#">Q5R9I1</a>
Reactivity	Human
Host	Rabbit
Clonality	polyclonal
Isotype	Rabbit IgG
Calculated MW	141397

**MTUS1 Antibody (C-Term) - Additional Information****Gene ID** 57509**Other Names**

Microtubule-associated tumor suppressor 1, AT2 receptor-binding protein, Angiotensin-II type 2 receptor-interacting protein, Mitochondrial tumor suppressor 1, MTUS1, ATBP, ATIP, GK1, KIAA1288, MTSG1

**Target/Specificity**

This MTUS1 antibody is generated from a rabbit immunized with a KLH conjugated synthetic peptide between 983-1017 amino acids from human MTUS1.

**Dilution**

WB~~1:2000

E~~Use at an assay dependent concentration.

**Format**

Purified polyclonal antibody supplied in PBS with 0.09% (W/V) sodium azide. This antibody is purified through a protein A column, followed by peptide affinity purification.

**Storage**

Maintain refrigerated at 2-8°C for up to 2 weeks. For long term storage store at -20°C in small aliquots to prevent freeze-thaw cycles.

**Precautions**

MTUS1 Antibody (C-Term) is for research use only and not for use in diagnostic or therapeutic procedures.

**MTUS1 Antibody (C-Term) - Protein Information****Name** MTUS1

**Synonyms** ATBP, ATIP, GK1, KIAA1288, MTSG1

**Function** Cooperates with AGTR2 to inhibit ERK2 activation and cell proliferation. May be required for AGTR2 cell surface expression. Together with PTPN6, induces UBE2V2 expression upon angiotensin-II stimulation. Isoform 1 inhibits breast cancer cell proliferation, delays the progression of mitosis by prolonging metaphase and reduces tumor growth.

**Cellular Location**

Mitochondrion. Golgi apparatus. Cell membrane. Nucleus. Note=In neurons, translocates into the nucleus after treatment with angiotensin-II.

**Tissue Location**

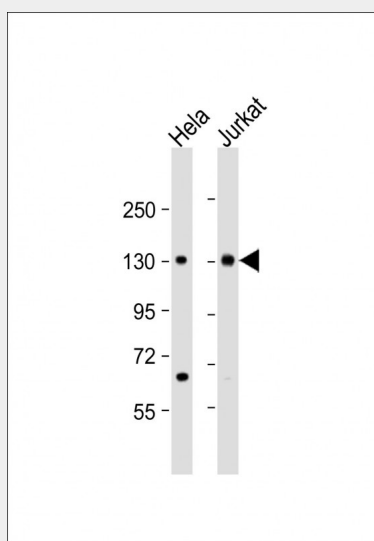
Ubiquitously expressed (at protein level). Highly expressed in brain. Down-regulated in ovarian carcinoma, pancreas carcinoma, colon carcinoma and head and neck squamous cell carcinoma (HNSCC). Isoform 1 is the major isoform in most peripheral tissues Isoform 2 is abundant in most peripheral tissues. Isoform 3 is the major isoform in brain, female reproductive tissues, thyroid and heart Within brain it is highly expressed in corpus callosum and pons Isoform 6 is brain-specific, it is the major isoform in cerebellum and fetal brain.

**MTUS1 Antibody (C-Term) - Protocols**

Provided below are standard protocols that you may find useful for product applications.

- [Western Blot](#)
- [Blocking Peptides](#)
- [Dot Blot](#)
- [Immunohistochemistry](#)
- [Immunofluorescence](#)
- [Immunoprecipitation](#)
- [Flow Cytometry](#)
- [Cell Culture](#)

**MTUS1 Antibody (C-Term) - Images**



All lanes : Anti-MTUS1 Antibody (C-Term) at 1:2000 dilution Lane 1: HeLa whole cell lysate Lane 2: Jurkat whole cell lysate Lysates/proteins at 20 µg per lane. Secondary Goat Anti-Rabbit IgG, (H+L), Peroxidase conjugated at 1/10000 dilution. Predicted band size : 141 kDa Blocking/Dilution buffer:

5% NFDM/TBST.

#### **MTUS1 Antibody (C-Term) - Background**

Cooperates with AGTR2 to inhibit ERK2 activation and cell proliferation. May be required for AGTR2 cell surface expression. Together with PTPN6, induces UBE2V2 expression upon angiotensin-II stimulation. Isoform 1 inhibits breast cancer cell proliferation, delays the progression of mitosis by prolonging metaphase and reduces tumor growth.

#### **MTUS1 Antibody (C-Term) - References**

Kinjo T.,et al.J. Hum. Genet. 45:12-17(2000).  
Seibold S.,et al.FASEB J. 17:1180-1182(2003).  
Nouet S.,et al.J. Biol. Chem. 279:28989-28997(2004).  
Ota T.,et al.Nat. Genet. 36:40-45(2004).  
Bechtel S.,et al.BMC Genomics 8:399-399(2007).