

LRIG3 Antibody (N-Term)
Purified Rabbit Polyclonal Antibody (Pab)
Catalog # AP22023a**Specification**

LRIG3 Antibody (N-Term) - Product Information

Application	WB,E
Primary Accession	Q6UXM1
Reactivity	Human
Host	Rabbit
Clonality	polyclonal
Isotype	Rabbit IgG
Calculated MW	123434

LRIG3 Antibody (N-Term) - Additional Information**Gene ID** 121227**Other Names**

Leucine-rich repeats and immunoglobulin-like domains protein 3, LIG-3, LRIG3, LIG3

Target/Specificity

This LRIG3 antibody is generated from a rabbit immunized with a KLH conjugated synthetic peptide between 23-54 amino acids from human LRIG3.

Dilution

WB~~1:2000

E~~Use at an assay dependent concentration.

Format

Purified polyclonal antibody supplied in PBS with 0.09% (W/V) sodium azide. This antibody is purified through a protein A column, followed by peptide affinity purification.

Storage

Maintain refrigerated at 2-8°C for up to 2 weeks. For long term storage store at -20°C in small aliquots to prevent freeze-thaw cycles.

Precautions

LRIG3 Antibody (N-Term) is for research use only and not for use in diagnostic or therapeutic procedures.

LRIG3 Antibody (N-Term) - Protein Information**Name** LRIG3**Synonyms** LIG3**Function** May play a role in craniofacial and inner ear morphogenesis during embryonic

development. May act within the otic vesicle epithelium to control formation of the lateral semicircular canal in the inner ear, possibly by restricting the expression of NTN1 (By similarity).

Cellular Location

Cell membrane; Single-pass type I membrane protein. Cytoplasmic vesicle membrane; Single-pass type I membrane protein Note=Detected in cytoplasmic vesicles when coexpressed with ERBB4

Tissue Location

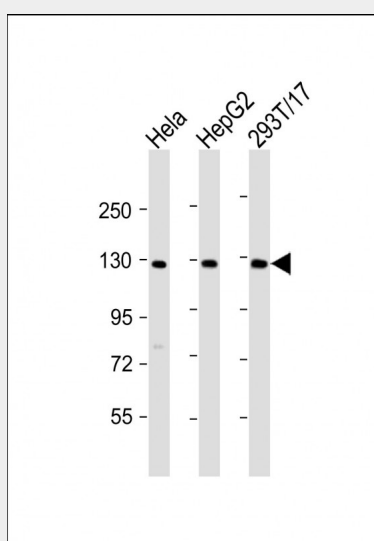
Widely expressed..

LRIG3 Antibody (N-Term) - Protocols

Provided below are standard protocols that you may find useful for product applications.

- [Western Blot](#)
- [Blocking Peptides](#)
- [Dot Blot](#)
- [Immunohistochemistry](#)
- [Immunofluorescence](#)
- [Immunoprecipitation](#)
- [Flow Cytometry](#)
- [Cell Culture](#)

LRIG3 Antibody (N-Term) - Images



All lanes : Anti-LRIG3 Antibody (N-Term) at 1:2000 dilution Lane 1: HeLa whole cell lysate Lane 2: HepG2 whole cell lysate Lane 3: 293T/17 whole cell lysate Lysates/proteins at 20 µg per lane. Secondary Goat Anti-Rabbit IgG, (H+L), Peroxidase conjugated at 1/10000 dilution. Predicted band size : 123 kDa Blocking/Dilution buffer: 5% NFDM/TBST.

LRIG3 Antibody (N-Term) - Background

May play a role in craniofacial and inner ear morphogenesis during embryonic development. May act within the otic vesicle epithelium to control formation of the lateral semicircular canal in the inner ear, possibly by restricting the expression of NTN1 (By similarity).

LRIG3 Antibody (N-Term) - References

Guo D.,et al.Genomics 84:157-165(2004).
Clark H.F.,et al.Genome Res. 13:2265-2270(2003).
Ota T.,et al.Nat. Genet. 36:40-45(2004).