

**CCT8L2 Antibody (N-Term)**  
**Purified Rabbit Polyclonal Antibody (Pab)**  
**Catalog # AP22024a****Specification**

---

**CCT8L2 Antibody (N-Term) - Product Information**

Application	WB, FC,E
Primary Accession	<a href="#">Q96SF2</a>
Other Accession	<a href="#">A6NM43</a>
Reactivity	Human
Predicted	Human
Host	Rabbit
Clonality	polyclonal
Isotype	Rabbit IgG
Calculated MW	59388

**CCT8L2 Antibody (N-Term) - Additional Information****Gene ID** 150160**Other Names**

Putative T-complex protein 1 subunit theta-like 2, CCT8L2, CESK1

**Target/Specificity**

This CCT8L2 antibody is generated from a rabbit immunized with a KLH conjugated synthetic peptide between 92-124 amino acids from human CCT8L2.

**Dilution**

WB~~1:2000

FC~~1:25

E~~Use at an assay dependent concentration.

**Format**

Purified polyclonal antibody supplied in PBS with 0.09% (W/V) sodium azide. This antibody is purified through a protein A column, followed by peptide affinity purification.

**Storage**

Maintain refrigerated at 2-8°C for up to 2 weeks. For long term storage store at -20°C in small aliquots to prevent freeze-thaw cycles.

**Precautions**

CCT8L2 Antibody (N-Term) is for research use only and not for use in diagnostic or therapeutic procedures.

**CCT8L2 Antibody (N-Term) - Protein Information****Name** CCT8L2

**Synonyms** CESK1

**Function** Possible molecular chaperone; assists the folding of proteins upon ATP hydrolysis.

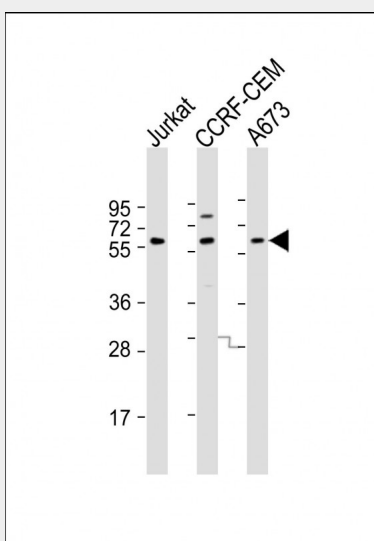
**Cellular Location**

Cytoplasm {ECO:0000250|UniProtKB:P40227}.

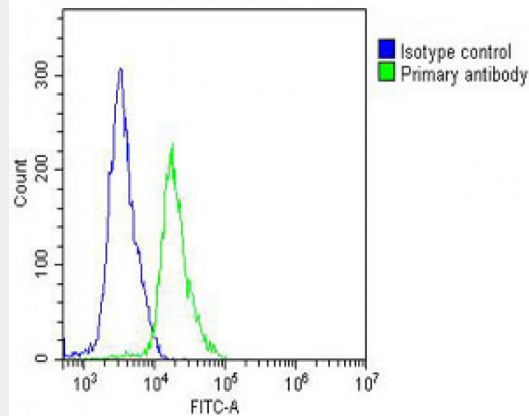
**CCT8L2 Antibody (N-Term) - Protocols**

Provided below are standard protocols that you may find useful for product applications.

- [Western Blot](#)
- [Blocking Peptides](#)
- [Dot Blot](#)
- [Immunohistochemistry](#)
- [Immunofluorescence](#)
- [Immunoprecipitation](#)
- [Flow Cytometry](#)
- [Cell Culture](#)

**CCT8L2 Antibody (N-Term) - Images**

All lanes : Anti-CCT8L2 Antibody (N-Term) at 1:2000 dilution Lane 1: Jurkat whole cell lysate Lane 2: CCRF-CEM whole cell lysate Lane 3: A673 whole cell lysate Lysates/proteins at 20 µg per lane. Secondary Goat Anti-Rabbit IgG, (H+L), Peroxidase conjugated at 1/10000 dilution. Predicted band size : 59 kDa Blocking/Dilution buffer: 5% NFDM/TBST.



Overlay histogram showing Jurkat cells stained with AP22024a (green line). The cells were fixed with 2% paraformaldehyde (10 min) and then permeabilized with 90% methanol for 10 min. The cells were then incubated in 2% bovine serum albumin to block non-specific protein-protein interactions followed by the antibody (AP22024a, 1:25 dilution) for 60 min at 37°C. The secondary antibody used was Goat-Anti-Rabbit IgG, DyLight® 488 Conjugated Highly Cross-Adsorbed(OH191631) at 1/200 dilution for 40 min at 37°C. Isotype control antibody (blue line) was rabbit IgG (1µg/1x10<sup>6</sup> cells) used under the same conditions. Acquisition of >10, 000 events was performed.

#### **CCT8L2 Antibody (N-Term) - Background**

Possible molecular chaperone; assists the folding of proteins upon ATP hydrolysis.

#### **CCT8L2 Antibody (N-Term) - References**

Riazi M.A.,et al.Genomics 62:90-94(1999).  
Collins J.E.,et al.Genome Biol. 5:R84.1-R84.11(2004).  
Dunham I.,et al.Nature 402:489-495(1999).  
Mural R.J.,et al.Submitted (JUL-2005) to the EMBL/GenBank/DDBJ databases.