

**LHPP Antibody (Center)**  
**Purified Rabbit Polyclonal Antibody (Pab)**  
**Catalog # AP22044c****Specification**

---

**LHPP Antibody (Center) - Product Information**

Application	WB,E
Primary Accession	<a href="#">Q9H008</a>
Other Accession	<a href="#">Q0VD18</a>
Reactivity	Human
Predicted	Bovine
Host	Rabbit
Clonality	polyclonal
Isotype	Rabbit IgG
Calculated MW	29165

**LHPP Antibody (Center) - Additional Information****Gene ID** 64077**Other Names**

Phospholysine phosphohistidine inorganic pyrophosphate phosphatase, hLHPP, 3.1.3.-, 3.6.1.1, LHPP

**Target/Specificity**

This LHPP antibody is generated from a rabbit immunized with a KLH conjugated synthetic peptide between 84-116 amino acids from the Central region of human LHPP.

**Dilution**

WB~~1:2000

E~~Use at an assay dependent concentration.

**Format**

Purified polyclonal antibody supplied in PBS with 0.09% (W/V) sodium azide. This antibody is purified through a protein A column, followed by peptide affinity purification.

**Storage**

Maintain refrigerated at 2-8°C for up to 2 weeks. For long term storage store at -20°C in small aliquots to prevent freeze-thaw cycles.

**Precautions**

LHPP Antibody (Center) is for research use only and not for use in diagnostic or therapeutic procedures.

**LHPP Antibody (Center) - Protein Information****Name** LHPP

**Function** Phosphatase that hydrolyzes imidodiphosphate, 3- phosphohistidine and 6-phospholysine. Has broad substrate specificity and can also hydrolyze inorganic diphosphate, but with lower efficiency (By similarity).

**Cellular Location**

Cytoplasm. Nucleus

**Tissue Location**

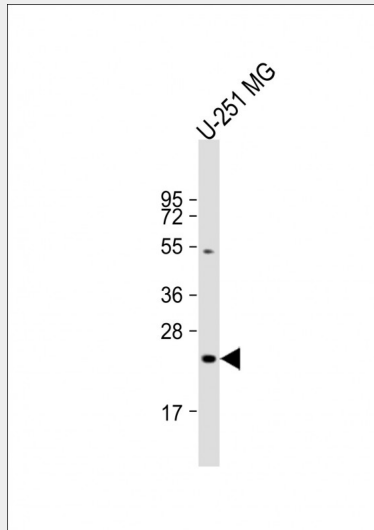
Expressed in brain, and at lower levels in liver and kidney. Detected in thyroid (at protein level). Expressed in liver, kidney and moderately in brain.

## **LHPP Antibody (Center) - Protocols**

Provided below are standard protocols that you may find useful for product applications.

- [Western Blot](#)
- [Blocking Peptides](#)
- [Dot Blot](#)
- [Immunohistochemistry](#)
- [Immunofluorescence](#)
- [Immunoprecipitation](#)
- [Flow Cytometry](#)
- [Cell Culture](#)

## **LHPP Antibody (Center) - Images**



Anti-LHPP Antibody (Center) at 1:2000 dilution + U-251 MG whole cell lysate Lysates/proteins at 20 µg per lane. Secondary Goat Anti-Rabbit IgG, (H+L), Peroxidase conjugated at 1/10000 dilution. Predicted band size : 29 kDa Blocking/Dilution buffer: 5% NFDM/TBST.

## **LHPP Antibody (Center) - Background**

Phosphatase that hydrolyzes imidodiphosphate, 3- phosphohistidine and 6-phospholysine. Has broad substrate specificity and can also hydrolyze inorganic diphosphate, but with lower efficiency (By similarity).

## **LHPP Antibody (Center) - References**

Yokoi F.,et al.J. Biochem. 133:607-614(2003).  
Ota T.,et al.Nat. Genet. 36:40-45(2004).  
Deloukas P.,et al.Nature 429:375-381(2004).  
Koike E.,et al.Biochem. Biophys. Res. Commun. 341:691-696(2006).