

GC Antibody (C-Term)
Purified Rabbit Polyclonal Antibody (Pab)
Catalog # AP22047b**Specification**

GC Antibody (C-Term) - Product Information

Application	WB,E
Primary Accession	P02774
Reactivity	Human
Host	Rabbit
Clonality	polyclonal
Isotype	Rabbit IgG
Calculated MW	52918

GC Antibody (C-Term) - Additional Information**Gene ID** 2638**Other Names**

Vitamin D-binding protein, DBP, VDB, Gc-globulin, Group-specific component, GC

Target/Specificity

This GC antibody is generated from a rabbit immunized with a KLH conjugated synthetic peptide between 442-473 amino acids from human GC.

Dilution

WB~~1:2000

E~~Use at an assay dependent concentration.

Format

Purified polyclonal antibody supplied in PBS with 0.09% (W/V) sodium azide. This antibody is purified through a protein A column, followed by peptide affinity purification.

Storage

Maintain refrigerated at 2-8°C for up to 2 weeks. For long term storage store at -20°C in small aliquots to prevent freeze-thaw cycles.

Precautions

GC Antibody (C-Term) is for research use only and not for use in diagnostic or therapeutic procedures.

GC Antibody (C-Term) - Protein Information**Name** GC**Function** Involved in vitamin D transport and storage, scavenging of extracellular G-actin, enhancement of the chemotactic activity of C5 alpha for neutrophils in inflammation and macrophage activation.

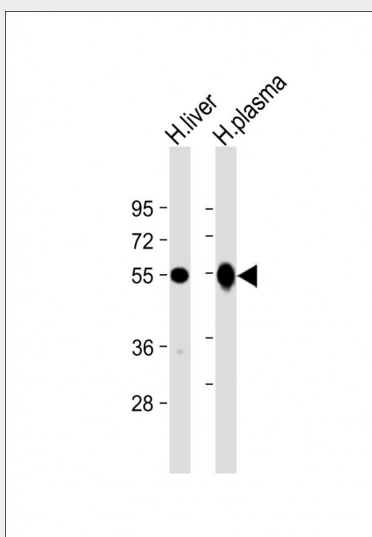
Cellular Location
Secreted.**Tissue Location**

Expressed in the liver. Found in plasma, ascites, cerebrospinal fluid and urine.

GC Antibody (C-Term) - Protocols

Provided below are standard protocols that you may find useful for product applications.

- [Western Blot](#)
- [Blocking Peptides](#)
- [Dot Blot](#)
- [Immunohistochemistry](#)
- [Immunofluorescence](#)
- [Immunoprecipitation](#)
- [Flow Cytometry](#)
- [Cell Culture](#)

GC Antibody (C-Term) - Images

All lanes : Anti-GC Antibody (C-Term) at 1:2000 dilution Lane 1: human liver lysate Lane 2: human plasma lysate Lysates/proteins at 20 µg per lane. Secondary Goat Anti-Rabbit IgG, (H+L), Peroxidase conjugated at 1/10000 dilution. Predicted band size : 53 kDa Blocking/Dilution buffer: 5% NFDM/TBST.

GC Antibody (C-Term) - Background

Multifunctional protein found in plasma, ascitic fluid, cerebrospinal fluid, and urine and on the surface of many cell types. In plasma, it carries the vitamin D sterols and prevents polymerization of actin by binding its monomers. DBP associates with membrane-bound immunoglobulin on the surface of B-lymphocytes and with IgG Fc receptor on the membranes of T-lymphocytes.

GC Antibody (C-Term) - References

Cooke N.E.,et al.J. Clin. Invest. 76:2420-2424(1985).
Yang F.,et al.Proc. Natl. Acad. Sci. U.S.A. 82:7994-7998(1985).

Braun A.,et al.Biochim. Biophys. Acta 1216:385-394(1993).
Witke W.F.,et al.Genomics 16:751-754(1993).
Ota T.,et al.Nat. Genet. 36:40-45(2004).