

**KLB Antibody (N-Term)**  
**Purified Rabbit Polyclonal Antibody (Pab)**  
**Catalog # AP22050a****Specification**

---

**KLB Antibody (N-Term) - Product Information**

Application	WB,E
Primary Accession	<a href="#">Q86Z14</a>
Reactivity	Human
Host	Rabbit
Clonality	polyclonal
Isotype	Rabbit IgG
Calculated MW	119808
Antigen Region	1-29

**KLB Antibody (N-Term) - Additional Information****Gene ID** 152831**Other Names**

Beta-klotho, BKL, BetaKlotho, Klotho beta-like protein, KLB

**Target/Specificity**

This KLB antibody is generated from a rabbit immunized with a KLH conjugated synthetic peptide between 1-29 amino acids from human KLB.

**Dilution**

WB~~1:2000

E~~Use at an assay dependent concentration.

**Format**

Purified polyclonal antibody supplied in PBS with 0.09% (W/V) sodium azide. This antibody is purified through a protein A column, followed by peptide affinity purification.

**Storage**

Maintain refrigerated at 2-8°C for up to 2 weeks. For long term storage store at -20°C in small aliquots to prevent freeze-thaw cycles.

**Precautions**

KLB Antibody (N-Term) is for research use only and not for use in diagnostic or therapeutic procedures.

**KLB Antibody (N-Term) - Protein Information****Name** KLB

**Function** Contributes to the transcriptional repression of cholesterol 7-alpha-hydroxylase (CYP7A1), the rate-limiting enzyme in bile acid synthesis. Probably inactive as a glycosidase.

Increases the ability of FGFR1 and FGFR4 to bind FGF21 (By similarity).

#### Cellular Location

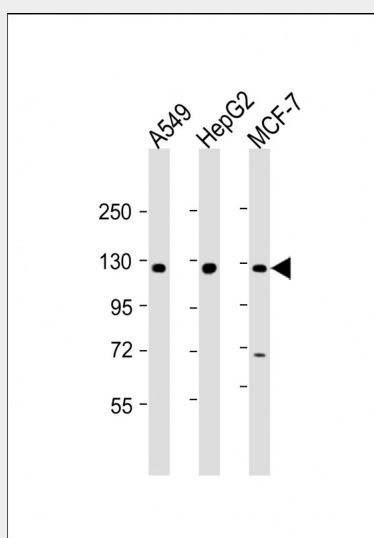
Cell membrane; Single-pass type III membrane protein

#### KLB Antibody (N-Term) - Protocols

Provided below are standard protocols that you may find useful for product applications.

- [Western Blot](#)
- [Blocking Peptides](#)
- [Dot Blot](#)
- [Immunohistochemistry](#)
- [Immunofluorescence](#)
- [Immunoprecipitation](#)
- [Flow Cytometry](#)
- [Cell Culture](#)

#### KLB Antibody (N-Term) - Images



All lanes : Anti-KLB Antibody (N-Term) at 1:2000 dilution Lane 1: A549 whole cell lysate Lane 2: HepG2 whole cell lysate Lane 3: MCF-7 whole cell lysate Lysates/proteins at 20 µg per lane. Secondary Goat Anti-Rabbit IgG, (H+L), Peroxidase conjugated at 1/10000 dilution. Predicted band size : 120 kDa Blocking/Dilution buffer: 5% NFDM/TBST.

#### KLB Antibody (N-Term) - Background

Contributes to the transcriptional repression of cholesterol 7-alpha-hydroxylase (CYP7A1), the rate-limiting enzyme in bile acid synthesis. Probably inactive as a glycosidase. Increases the ability of FGFR1 and FGFR4 to bind FGF21 (By similarity).

#### KLB Antibody (N-Term) - References

Hayashi A.,et al.Submitted (FEB-2002) to the EMBL/GenBank/DDBJ databases.  
Wu X.,et al.J. Biol. Chem. 283:33304-33309(2008).  
Micanovic R.,et al.J. Cell. Physiol. 219:227-234(2009).