

MIB2 Antibody (N-Term)
Purified Rabbit Polyclonal Antibody (Pab)
Catalog # AP22053a**Specification**

MIB2 Antibody (N-Term) - Product Information

Application	WB,E
Primary Accession	Q96AX9
Reactivity	Mouse
Host	Rabbit
Clonality	polyclonal
Isotype	Rabbit IgG
Calculated MW	103658

MIB2 Antibody (N-Term) - Additional Information**Gene ID** 142678**Other Names**

E3 ubiquitin-protein ligase MIB2, 6.3.2.-, Mind bomb homolog 2, Novel zinc finger protein, Novelzin, Putative NF-kappa-B-activating protein 002N, Skeletrophin, Zinc finger ZZ type with ankyrin repeat domain protein 1, MIB2, SKD, ZZANK1

Target/Specificity

This MIB2 antibody is generated from a rabbit immunized with a KLH conjugated synthetic peptide between 216-249 amino acids from human MIB2.

Dilution

WB~~1:1000

E~~Use at an assay dependent concentration.

Format

Purified polyclonal antibody supplied in PBS with 0.09% (W/V) sodium azide. This antibody is purified through a protein A column, followed by peptide affinity purification.

Storage

Maintain refrigerated at 2-8°C for up to 2 weeks. For long term storage store at -20°C in small aliquots to prevent freeze-thaw cycles.

Precautions

MIB2 Antibody (N-Term) is for research use only and not for use in diagnostic or therapeutic procedures.

MIB2 Antibody (N-Term) - Protein Information**Name** MIB2 ([HGNC:30577](#))**Synonyms** SKD, ZZANK1

Function E3 ubiquitin-protein ligase that mediates ubiquitination of Delta receptors, which act as ligands of Notch proteins. Positively regulates the Delta-mediated Notch signaling by ubiquitinating the intracellular domain of Delta, leading to endocytosis of Delta receptors.

Cellular Location

Cytoplasm. Endosome. Note=Colocalizes with endosomal compartments

Tissue Location

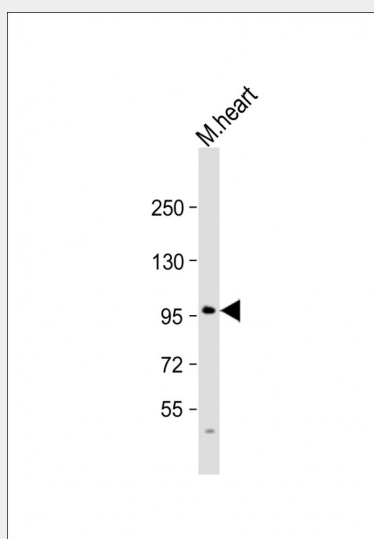
Expressed in skeletal muscle, and to a lesser extent in heart, brain and kidney.

MIB2 Antibody (N-Term) - Protocols

Provided below are standard protocols that you may find useful for product applications.

- [Western Blot](#)
- [Blocking Peptides](#)
- [Dot Blot](#)
- [Immunohistochemistry](#)
- [Immunofluorescence](#)
- [Immunoprecipitation](#)
- [Flow Cytometry](#)
- [Cell Culture](#)

MIB2 Antibody (N-Term) - Images



Anti-MIB2 Antibody (N-Term) at 1:1000 dilution + mouse heart lysate Lysates/proteins at 20 µg per lane. Secondary Goat Anti-Rabbit IgG, (H+L), Peroxidase conjugated at 1/10000 dilution. Predicted band size : 110 kDa Blocking/Dilution buffer: 5% NFDM/TBST.

MIB2 Antibody (N-Term) - Background

E3 ubiquitin-protein ligase that mediates ubiquitination of Delta receptors, which act as ligands of Notch proteins. Positively regulates the Delta-mediated Notch signaling by ubiquitinating the intracellular domain of Delta, leading to endocytosis of Delta receptors (By similarity).

MIB2 Antibody (N-Term) - References

Takeuchi T.,et al.Am. J. Pathol. 163:1395-1404(2003).
Takeuchi T.,et al.Submitted (JUN-2002) to the EMBL/GenBank/DDBJ databases.
Matsuda A.,et al.Oncogene 22:3307-3318(2003).
Ota T.,et al.Nat. Genet. 36:40-45(2004).
Gregory S.G.,et al.Nature 441:315-321(2006).