

**SLC6A19 Antibody (C-Term)**  
**Purified Rabbit Polyclonal Antibody (Pab)**  
**Catalog # AP22057b****Specification**

---

**SLC6A19 Antibody (C-Term) - Product Information**

Application	WB,E
Primary Accession	<a href="#">Q695T7</a>
Reactivity	Human
Host	Rabbit
Clonality	polyclonal
Isotype	Rabbit IgG
Calculated MW	71110

**SLC6A19 Antibody (C-Term) - Additional Information****Gene ID** 340024**Other Names**

Sodium-dependent neutral amino acid transporter B(0)AT1, Solute carrier family 6 member 19, System B(0) neutral amino acid transporter AT1, SLC6A19, B0AT1

**Target/Specificity**

This SLC6A19 antibody is generated from a rabbit immunized with a KLH conjugated synthetic peptide between 544-575 amino acids from human SLC6A19.

**Dilution**

WB~~1:2000

E~~Use at an assay dependent concentration.

**Format**

Purified polyclonal antibody supplied in PBS with 0.09% (W/V) sodium azide. This antibody is purified through a protein A column, followed by peptide affinity purification.

**Storage**

Maintain refrigerated at 2-8°C for up to 2 weeks. For long term storage store at -20°C in small aliquots to prevent freeze-thaw cycles.

**Precautions**

SLC6A19 Antibody (C-Term) is for research use only and not for use in diagnostic or therapeutic procedures.

**SLC6A19 Antibody (C-Term) - Protein Information****Name** SLC6A19**Synonyms** B0AT1

**Function** Transporter that mediates resorption of neutral amino acids across the apical membrane of renal and intestinal epithelial cells (PubMed:[15286787](#), PubMed:[15286788](#), PubMed:[18424768](#), PubMed:[18484095](#), PubMed:[19185582](#), PubMed:[26240152](#)). This uptake is sodium-dependent and chloride-independent (PubMed:[15286787](#), PubMed:[15286788](#), PubMed:[19185582](#)). Requires CLTRN in kidney or ACE2 in intestine for cell surface expression and amino acid transporter activity (PubMed:[18424768](#), PubMed:[19185582](#)).

#### Cellular Location

Cell membrane; Multi-pass membrane protein. Apical cell membrane; Multi-pass membrane protein. Note=Colocalizes with ACE2 on the apical membrane of cells lining villi of the jejunum, ileum and on kidney proximal tubules.

#### Tissue Location

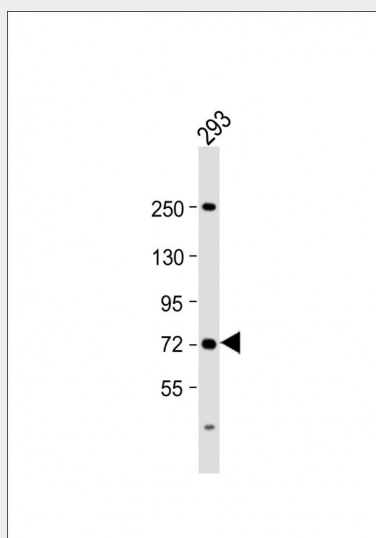
Robust expression in kidney and small intestine, with minimal expression in pancreas (PubMed:[15286787](#), PubMed:[18424768](#)) Also expressed in stomach, liver, duodenum, ileocecum, colon and prostate. Not detected in testis, whole brain, cerebellum, fetal liver, spleen, skeletal muscle, uterus, heart or lung

### SLC6A19 Antibody (C-Term) - Protocols

Provided below are standard protocols that you may find useful for product applications.

- [Western Blot](#)
- [Blocking Peptides](#)
- [Dot Blot](#)
- [Immunohistochemistry](#)
- [Immunofluorescence](#)
- [Immunoprecipitation](#)
- [Flow Cytometry](#)
- [Cell Culture](#)

### SLC6A19 Antibody (C-Term) - Images



Anti-SLC6A19 Antibody (C-Term) at 1:2000 dilution + 293 whole cell lysate Lysates/proteins at 20 µg per lane. Secondary Goat Anti-Rabbit IgG, (H+L), Peroxidase conjugated at 1/10000 dilution. Predicted band size : 71 kDa Blocking/Dilution buffer: 5% NFDm/TBST.

### SLC6A19 Antibody (C-Term) - Background

Transporter that mediates epithelial resorption of neutral amino acids across the apical membrane of epithelial cells in the kidney and intestine. It appears that leucine is the preferred substrate, but all large neutral non-aromatic L-amino acids bind to this transporter. Uptake of leucine is sodium-dependent. In contrast to other members of the neurotransmitter transporter family, does not appear to be chloride-dependent (By similarity).

#### **SLC6A19 Antibody (C-Term) - References**

Kleta R.,et al.Nat. Genet. 36:999-1002(2004).  
Seow H.F.,et al.Nat. Genet. 36:1003-1007(2004).  
Ota T.,et al.Nat. Genet. 36:40-45(2004).  
Mural R.J.,et al.Submitted (SEP-2005) to the EMBL/GenBank/DDBJ databases.  
Broer S.,et al.J. Clin. Invest. 118:3881-3892(2008).