

**LSR Antibody (C-Term)**  
**Purified Rabbit Polyclonal Antibody (Pab)**  
**Catalog # AP22065b****Specification**

---

**LSR Antibody (C-Term) - Product Information**

Application	WB,E
Primary Accession	<a href="#">Q86X29</a>
Reactivity	Human
Host	Rabbit
Clonality	polyclonal
Isotype	Rabbit IgG
Calculated MW	71439

**LSR Antibody (C-Term) - Additional Information****Gene ID** 51599**Other Names**

Lipolysis-stimulated lipoprotein receptor, LSR, LISCH

**Target/Specificity**

This LSR antibody is generated from a rabbit immunized with a KLH conjugated synthetic peptide between 550-583 amino acids from human LSR.

**Dilution**

WB~~1:1000

E~~Use at an assay dependent concentration.

**Format**

Purified polyclonal antibody supplied in PBS with 0.09% (W/V) sodium azide. This antibody is purified through a protein A column, followed by peptide affinity purification.

**Storage**

Maintain refrigerated at 2-8°C for up to 2 weeks. For long term storage store at -20°C in small aliquots to prevent freeze-thaw cycles.

**Precautions**

LSR Antibody (C-Term) is for research use only and not for use in diagnostic or therapeutic procedures.

**LSR Antibody (C-Term) - Protein Information****Name** LSR ([HGNC:29572](#))**Synonyms** ILDR3, LISCH**Function** Probable role in the clearance of triglyceride-rich lipoprotein from blood. Binds

chylomicrons, LDL and VLDL in presence of free fatty acids and allows their subsequent uptake in the cells (By similarity). Maintains epithelial barrier function by recruiting MARVELD2/tricellulin to tricellular tight junctions (By similarity).

#### Cellular Location

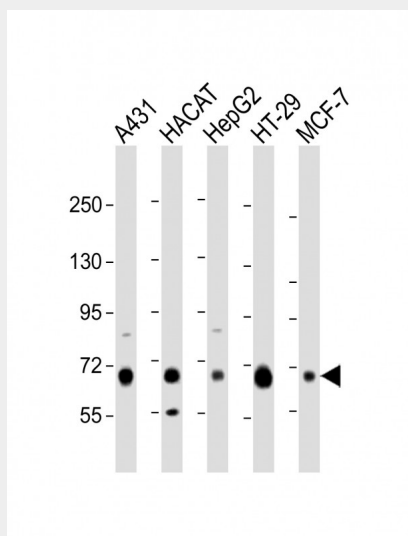
Cell membrane; Single-pass type I membrane protein. Cell junction, tight junction Note=Located at tricellular contacts.

### LSR Antibody (C-Term) - Protocols

Provided below are standard protocols that you may find useful for product applications.

- [Western Blot](#)
- [Blocking Peptides](#)
- [Dot Blot](#)
- [Immunohistochemistry](#)
- [Immunofluorescence](#)
- [Immunoprecipitation](#)
- [Flow Cytometry](#)
- [Cell Culture](#)

### LSR Antibody (C-Term) - Images



All lanes : Anti-LSR Antibody (C-Term) at 1:1000 dilution Lane 1: A431 whole cell lysate Lane 2: HACAT whole cell lysate Lane 3: HepG2 whole cell lysate Lane 4: HT-29 whole cell lysate Lane 5: MCF-7 whole cell lysate Lysates/proteins at 20 µg per lane. Secondary Goat Anti-Rabbit IgG, (H+L), Peroxidase conjugated at 1/10000 dilution. Predicted band size : 71 kDa Blocking/Dilution buffer: 5% NFDM/TBST.

### LSR Antibody (C-Term) - Background

Probable role in the clearance of triglyceride-rich lipoprotein from blood. Binds chylomicrons, LDL and VLDL in presence of free fatty acids and allows their subsequent uptake in the cells (By similarity).

### LSR Antibody (C-Term) - References

Teramoto T.,et al.Submitted (FEB-1999) to the EMBL/GenBank/DDBJ databases.  
Ota T.,et al.Nat. Genet. 36:40-45(2004).  
Otsuki T.,et al.DNA Res. 12:117-126(2005).  
Grimwood J.,et al.Nature 428:529-535(2004).  
Tang L.-Y.,et al.Mol. Cell. Proteomics 6:1952-1967(2007).