

**LRPPRC Antibody (C-Term)**  
**Purified Rabbit Polyclonal Antibody (Pab)**  
**Catalog # AP22067b****Specification**

---

**LRPPRC Antibody (C-Term) - Product Information**

Application	WB,E
Primary Accession	<a href="#">P42704</a>
Reactivity	Human
Host	Rabbit
Clonality	polyclonal
Isotype	Rabbit IgG
Calculated MW	157905

**LRPPRC Antibody (C-Term) - Additional Information****Gene ID** 10128**Other Names**

Leucine-rich PPR motif-containing protein, mitochondrial, 130 kDa leucine-rich protein, LRP 130, GP130, LRPPRC, LRP130

**Target/Specificity**

This LRPPRC antibody is generated from a rabbit immunized with a KLH conjugated synthetic peptide between 1203-1236 amino acids from human LRPPRC.

**Dilution**

WB~~1:2000

E~~Use at an assay dependent concentration.

**Format**

Purified polyclonal antibody supplied in PBS with 0.09% (W/V) sodium azide. This antibody is purified through a protein A column, followed by peptide affinity purification.

**Storage**

Maintain refrigerated at 2-8°C for up to 2 weeks. For long term storage store at -20°C in small aliquots to prevent freeze-thaw cycles.

**Precautions**

LRPPRC Antibody (C-Term) is for research use only and not for use in diagnostic or therapeutic procedures.

**LRPPRC Antibody (C-Term) - Protein Information****Name** LRPPRC**Synonyms** LRP130

**Function** May play a role in RNA metabolism in both nuclei and mitochondria. In the nucleus binds to HNRPA1-associated poly(A) mRNAs and is part of nmRNP complexes at late stages of mRNA maturation which are possibly associated with nuclear mRNA export. Positively modulates nuclear export of mRNAs containing the EIF4E sensitivity element (4ESE) by binding simultaneously to both EIF4E and the 4ESE and acting as a platform for assembly for the RNA export complex (PubMed:[19262567](#), PubMed:[28325843](#)). Also binds to exportin XPO1/CRM1 to engage the nuclear pore and traffic the bound mRNAs to the cytoplasm (PubMed:[28325843](#)). May bind mature mRNA in the nucleus outer membrane. In mitochondria binds to poly(A) mRNA. Plays a role in translation or stability of mitochondrially encoded cytochrome c oxidase (COX) subunits. May be involved in transcription regulation. Cooperates with PPARGC1A to regulate certain mitochondrially encoded genes and gluconeogenic genes and may regulate docking of PPARGC1A to transcription factors. Seems to be involved in the transcription regulation of the multidrug-related genes MDR1 and MVP. Part of a nuclear factor that binds to the invMED1 element of MDR1 and MVP gene promoters. Binds single-stranded DNA (By similarity). Required for maintaining mitochondrial potential (PubMed:[23822101](#)). Suppresses the initiation of basal levels of autophagy and mitophagy by sustaining BCL2 levels (PubMed:[23822101](#)).

#### **Cellular Location**

Mitochondrion. Nucleus Nucleus, nucleoplasm. Nucleus inner membrane. Nucleus outer membrane  
Note=Seems to be predominantly mitochondrial

#### **Tissue Location**

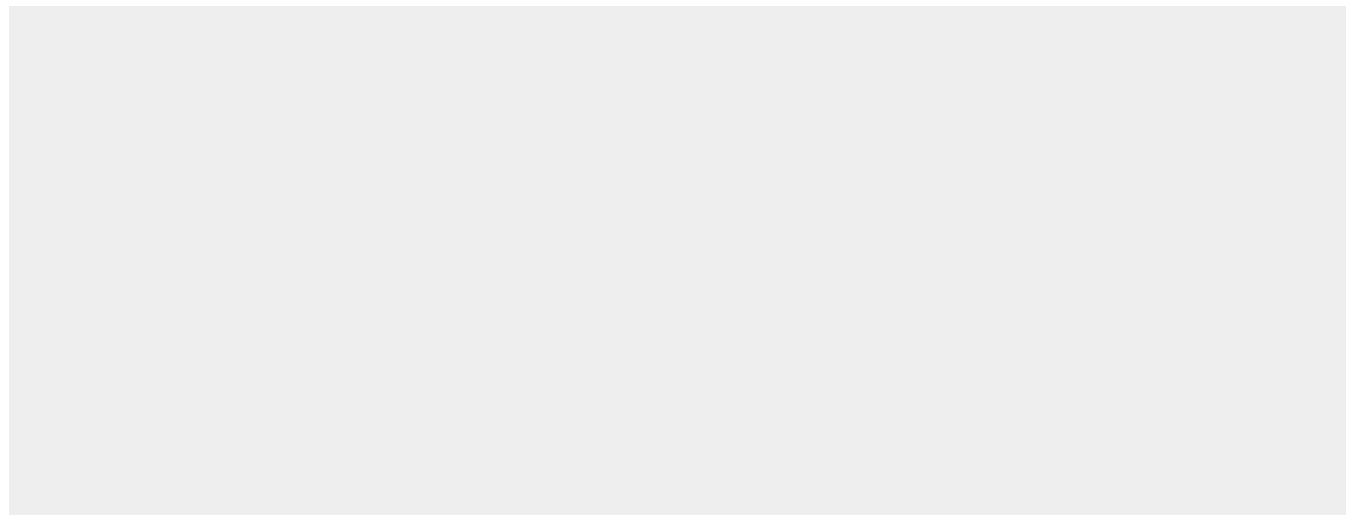
Expressed ubiquitously. Expression is highest in heart, skeletal muscle, kidney and liver, intermediate in brain, non- mucosal colon, spleen and placenta, and lowest in small intestine, thymus, lung and peripheral blood leukocytes

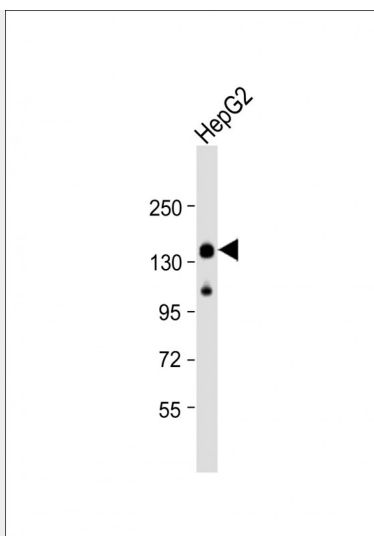
#### **LRPPRC Antibody (C-Term) - Protocols**

Provided below are standard protocols that you may find useful for product applications.

- [Western Blot](#)
- [Blocking Peptides](#)
- [Dot Blot](#)
- [Immunohistochemistry](#)
- [Immunofluorescence](#)
- [Immunoprecipitation](#)
- [Flow Cytometry](#)
- [Cell Culture](#)

#### **LRPPRC Antibody (C-Term) - Images**





Anti-LRPPRC Antibody (C-Term) at 1:2000 dilution + HepG2 whole cell lysate Lysates/proteins at 20 µg per lane. Secondary Goat Anti-Rabbit IgG, (H+L), Peroxidase conjugated at 1/10000 dilution. Predicted band size : 158 kDa Blocking/Dilution buffer: 5% NFDM/TBST.

#### **LRPPRC Antibody (C-Term) - Background**

May play a role in RNA metabolism in both nuclei and mitochondria. In the nucleus binds to HNRPA1-associated poly(A) mRNAs and is part of nmRNP complexes at late stages of mRNA maturation which are possibly associated with nuclear mRNA export. May bind mature mRNA in the nucleus outer membrane. In mitochondria binds to poly(A) mRNA. Plays a role in translation or stability of mitochondrially encoded cytochrome c oxidase (COX) subunits. May be involved in transcription regulation. Cooperates with PPARGC1A to regulate certain mitochondrially encoded genes and gluconeogenic genes and may regulate docking of PPARGC1A to transcription factors. Seems to be involved in the transcription regulation of the multidrug-related genes MDR1 and MVP. Part of a nuclear factor that binds to the invMED1 element of MDR1 and MVP gene promoters. Binds single-stranded DNA (By similarity).

#### **LRPPRC Antibody (C-Term) - References**

Xu F.,et al.Biochem. J. 382:331-336(2004).  
Ota T.,et al.Nat. Genet. 36:40-45(2004).  
Hillier L.W.,et al.Nature 434:724-731(2005).  
Hou J.,et al.In Vitro Cell. Dev. Biol. Anim. 30A:111-114(1994).  
Bienvenut W.V.,et al.Submitted (JUL-2007) to UniProtKB.