

**TUSC1 Antibody (N-Term)**  
**Purified Rabbit Polyclonal Antibody (Pab)**  
**Catalog # AP22083a****Specification**

---

**TUSC1 Antibody (N-Term) - Product Information**

|                   |                        |
|-------------------|------------------------|
| Application       | WB,E                   |
| Primary Accession | <a href="#">Q2TAM9</a> |
| Reactivity        | Human, Mouse           |
| Host              | Rabbit                 |
| Clonality         | polyclonal             |
| Isotype           | Rabbit IgG             |
| Calculated MW     | 23105                  |

**TUSC1 Antibody (N-Term) - Additional Information****Gene ID** 286319**Other Names**

Tumor suppressor candidate gene 1 protein, TSG-9, TSG9, TUSC1

**Target/Specificity**

This TUSC1 antibody is generated from a rabbit immunized with a KLH conjugated synthetic peptide between 31-64 amino acids from human TUSC1.

**Dilution**

WB~~1:2000

E~~Use at an assay dependent concentration.

**Format**

Purified polyclonal antibody supplied in PBS with 0.09% (W/V) sodium azide. This antibody is purified through a protein A column, followed by peptide affinity purification.

**Storage**

Maintain refrigerated at 2-8°C for up to 2 weeks. For long term storage store at -20°C in small aliquots to prevent freeze-thaw cycles.

**Precautions**

TUSC1 Antibody (N-Term) is for research use only and not for use in diagnostic or therapeutic procedures.

**TUSC1 Antibody (N-Term) - Protein Information****Name** TUSC1**Tissue Location**

Widely expressed at low level. Expressed at higher level in testis, weakly expressed in muscle, colon, lung and spleen Not detected in 3 non small cell lung carcinoma (NSCLC) cell lines with

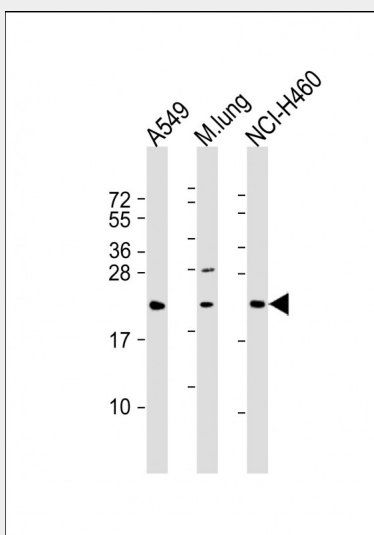
homozygous deletion of the 9p region, while it is down-regulated in 3 other tumor cell lines.

### **TUSC1 Antibody (N-Term) - Protocols**

Provided below are standard protocols that you may find useful for product applications.

- [Western Blot](#)
- [Blocking Peptides](#)
- [Dot Blot](#)
- [Immunohistochemistry](#)
- [Immunofluorescence](#)
- [Immunoprecipitation](#)
- [Flow Cytometry](#)
- [Cell Culture](#)

### **TUSC1 Antibody (N-Term) - Images**



All lanes : Anti-TUSC1 Antibody (N-Term) at 1:2000 dilution Lane 1: A549 whole cell lysate Lane 2: mouse lung lysate Lane 3: NCI-H460 whole cell lysate Lysates/proteins at 20 µg per lane. Secondary Goat Anti-Rabbit IgG, (H+L), Peroxidase conjugated at 1/10000 dilution. Predicted band size : 23 kDa Blocking/Dilution buffer: 5% NFDm/TBST.

### **TUSC1 Antibody (N-Term) - References**

Shan Z.,et al.Oncogene 23:6612-6620(2004).  
Humphray S.J.,et al.Nature 429:369-374(2004).  
Olsen J.V.,et al.Cell 127:635-648(2006).  
Burkard T.R.,et al.BMC Syst. Biol. 5:17-17(2011).