

**FEM1B Antibody (C-Term)**  
**Purified Rabbit Polyclonal Antibody (Pab)**  
**Catalog # AP22084b****Specification**

---

**FEM1B Antibody (C-Term) - Product Information**

Application	WB,E
Primary Accession	<a href="#">Q9UK73</a>
Other Accession	<a href="#">Q9Z2G0</a> , <a href="#">P0C6P7</a>
Reactivity	Human, Mouse, Rat
Predicted	Mouse, Rat
Host	Rabbit
Clonality	polyclonal
Isotype	Rabbit IgG
Calculated MW	70264

**FEM1B Antibody (C-Term) - Additional Information****Gene ID** 10116**Other Names**

Protein fem-1 homolog B, FEM1b, FEM1-beta, Fem-1-like death receptor-binding protein alpha, Fem-1-like in apoptotic pathway protein alpha, F1A-alpha, FEM1B, F1AA, KIAA0396

**Target/Specificity**

This FEM1B antibody is generated from a rabbit immunized with a KLH conjugated synthetic peptide between 547-579 amino acids from human FEM1B.

**Dilution**

WB~~1:2000

**Format**

Purified polyclonal antibody supplied in PBS with 0.09% (W/V) sodium azide. This antibody is purified through a protein A column, followed by peptide affinity purification.

**Storage**

Maintain refrigerated at 2-8°C for up to 2 weeks. For long term storage store at -20°C in small aliquots to prevent freeze-thaw cycles.

**Precautions**

FEM1B Antibody (C-Term) is for research use only and not for use in diagnostic or therapeutic procedures.

**FEM1B Antibody (C-Term) - Protein Information****Name** FEM1B {ECO:0000303|PubMed:10623617, ECO:0000312|HGNC:HGNC:3649}**Function** Substrate-recognition component of a Cul2-RING (CRL2) E3 ubiquitin-protein ligase

complex of the DesCEND (destruction via C-end degrons) pathway, which recognizes a C-degron located at the extreme C terminus of target proteins, leading to their ubiquitination and degradation (PubMed:[29779948](#), PubMed:[33398170](#), PubMed:[33398168](#)). The C- degron recognized by the DesCEND pathway is usually a motif of less than ten residues and can be present in full-length proteins, truncated proteins or proteolytically cleaved forms (PubMed:[29779948](#), PubMed:[33398170](#), PubMed:[33398168](#)). The CRL2(FEM1B) complex specifically recognizes proteins ending with -Gly-Leu-Asp-Arg, such as CDK5R1, leading to their ubiquitination and degradation (PubMed:[33398170](#), PubMed:[33398168](#)). Also acts as a regulator of the reductive stress response by mediating ubiquitination of reduced FNIP1: in response to reductive stress, the CRL2(FEM1B) complex specifically recognizes a conserved Cys degron in FNIP1 when this degron is reduced, leading to FNIP1 degradation and subsequent activation of mitochondria to recalibrate reactive oxygen species (ROS) (By similarity). Mechanistically, recognizes and binds reduced FNIP1 through two interface zinc ions, which act as a molecular glue that recruit reduced FNIP1 to FEM1B (By similarity). Promotes ubiquitination of GLI1, suppressing GLI1 transcriptional activator activity (PubMed:[24076122](#)). Promotes ubiquitination and degradation of ANKRD37 (By similarity). Promotes ubiquitination and degradation of SLBP (PubMed:[28118078](#)). Involved in apoptosis by acting as a death receptor-associated protein that mediates apoptosis (PubMed:[10542291](#)). Also involved in glucose homeostasis in pancreatic islet (By similarity). May also act as an adapter/mediator in replication stress-induced signaling that leads to the activation of CHEK1 (PubMed:[19330022](#)).

#### Cellular Location

Cytoplasm. Nucleus Note=In the nucleus, the protein level increased slightly after camptothecin (CPT) treatment (PubMed:[19330022](#)). Associated with chromatin (PubMed:[19330022](#)).

#### Tissue Location

Widely expressed (PubMed:[10542291](#)). Highly expressed in testis (PubMed:[10542291](#)). Weakly expressed in other tissues (PubMed:[10542291](#)).

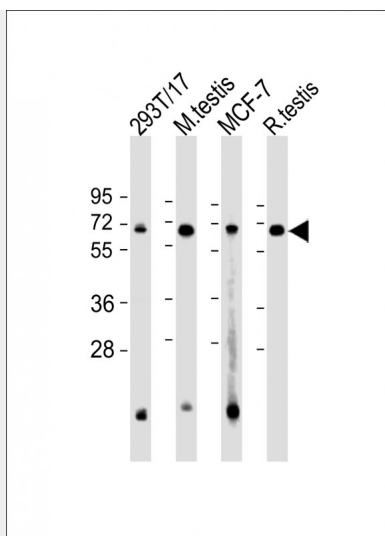
### FEM1B Antibody (C-Term) - Protocols

Provided below are standard protocols that you may find useful for product applications.

- [Western Blot](#)
- [Blocking Peptides](#)
- [Dot Blot](#)
- [Immunohistochemistry](#)
- [Immunofluorescence](#)
- [Immunoprecipitation](#)
- [Flow Cytometry](#)
- [Cell Culture](#)

### FEM1B Antibody (C-Term) - Images





All lanes : Anti-FEM1B Antibody (C-Term) at 1:2000 dilution Lane 1: 293T/17 whole cell lysate  
Lane 2: mouse testis lysate Lane 3: MCF-7 whole cell lysate Lane 4: rat testis lysate  
Lysates/proteins at 20 µg per lane. Secondary Goat Anti-Rabbit IgG, (H+L), Peroxidase conjugated  
at 1/10000 dilution. Predicted band size : 70 kDa Blocking/Dilution buffer: 5% NFDM/TBST.

#### **FEM1B Antibody (C-Term) - Background**

Component of an E3 ubiquitin-protein ligase complex, in which it may act as a substrate recognition subunit. Involved in apoptosis by acting as a death receptor-associated protein that mediates apoptosis. Also involved in glucose homeostasis in pancreatic islet. Functions as an adapter/mediator in replication stress-induced signaling that leads to the activation of CHEK1.

#### **FEM1B Antibody (C-Term) - References**

Chan S.-L.,et al.J. Biol. Chem. 274:32461-32468(1999).  
Ventura-Holman T.,et al.Biochem. Biophys. Res. Commun. 267:317-320(2000).  
Ishikawa K.,et al.DNA Res. 4:307-313(1997).  
Nakajima D.,et al.DNA Res. 9:99-106(2002).  
Ota T.,et al.Nat. Genet. 36:40-45(2004).