

NUGGC Antibody (N-Term)
Purified Rabbit Polyclonal Antibody (Pab)
Catalog # AP22085a

Specification

NUGGC Antibody (N-Term) - Product Information

Application	WB,E
Primary Accession	Q68CJ6
Reactivity	Human
Host	Rabbit
Clonality	polyclonal
Isotype	Rabbit IgG

NUGGC Antibody (N-Term) - Additional Information

Gene ID 389643

Other Names

Nuclear GTPase SLIP-GC, 3.6.1.-, Speckled-like pattern in the germinal center, NUGGC, C8orf80

Target/Specificity

This NUGGC antibody is generated from a rabbit immunized with a KLH conjugated synthetic peptide between 27-59 amino acids from human NUGGC.

Dilution

WB~~1:2000

E~~Use at an assay dependent concentration.

Format

Purified polyclonal antibody supplied in PBS with 0.09% (W/V) sodium azide. This antibody is purified through a protein A column, followed by peptide affinity purification.

Storage

Maintain refrigerated at 2-8°C for up to 2 weeks. For long term storage store at -20°C in small aliquots to prevent freeze-thaw cycles.

Precautions

NUGGC Antibody (N-Term) is for research use only and not for use in diagnostic or therapeutic procedures.

NUGGC Antibody (N-Term) - Protein Information

Name NUGGC

Synonyms C8orf80

Function Nuclear GTPase found in germinal center B-cells, where it may inhibit function of the activation-induced cytidine deaminase AICDA (PubMed:[19734146](#)). Reduces somatic

hypermutation in B-cells which may enhance genome stability (By similarity).

Cellular Location

Nucleus speckle.

Tissue Location

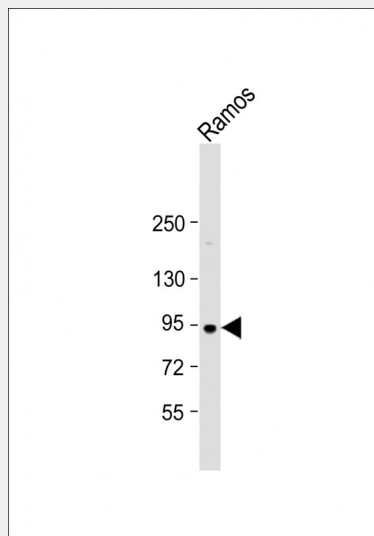
Expressed in germinal center B-cell and in lymphomas derived from germinal center B-cell

NUGGC Antibody (N-Term) - Protocols

Provided below are standard protocols that you may find useful for product applications.

- [Western Blot](#)
- [Blocking Peptides](#)
- [Dot Blot](#)
- [Immunohistochemistry](#)
- [Immunofluorescence](#)
- [Immunoprecipitation](#)
- [Flow Cytometry](#)
- [Cell Culture](#)

NUGGC Antibody (N-Term) - Images



Anti-NUGGC Antibody (N-Term) at 1:2000 dilution + Ramos whole cell lysate Lysates/proteins at 20 μ g per lane. Secondary Goat Anti-Rabbit IgG, (H+L), Peroxidase conjugated at 1/10000 dilution. Predicted band size : 91 kDa Blocking/Dilution buffer: 5% NFDM/TBST.

NUGGC Antibody (N-Term) - Background

Plays a role as replication-related GTPase protein in germinal center B-cell.

NUGGC Antibody (N-Term) - References

- Nusbaum C., et al. Nature 439:331-335(2006).
Yamada S., et al. Oncogene 23:5901-5911(2004).
Ota T., et al. Nat. Genet. 36:40-45(2004).
Richter K., et al. J. Biol. Chem. 284:30652-30661(2009).

