

RPL4 Antibody (C-Term)
Purified Rabbit Polyclonal Antibody (Pab)
Catalog # AP22092b

Specification

RPL4 Antibody (C-Term) - Product Information

Application	WB,E
Primary Accession	P36578
Other Accession	Q28346 , Q9D8E6 , Q5RCR3 , P50878
Reactivity	Human, Rat
Predicted	Mouse
Host	Rabbit
Clonality	polyclonal
Isotype	Rabbit IgG
Calculated MW	47697

RPL4 Antibody (C-Term) - Additional Information

Gene ID 6124

Other Names

60S ribosomal protein L4, 60S ribosomal protein L1, RPL4, RPL1

Target/Specificity

This RPL4 antibody is generated from a rabbit immunized with a KLH conjugated synthetic peptide between 392-424 amino acids from human RPL4.

Dilution

WB~~1:2000

Format

Purified polyclonal antibody supplied in PBS with 0.09% (W/V) sodium azide. This antibody is purified through a protein A column, followed by peptide affinity purification.

Storage

Maintain refrigerated at 2-8°C for up to 2 weeks. For long term storage store at -20°C in small aliquots to prevent freeze-thaw cycles.

Precautions

RPL4 Antibody (C-Term) is for research use only and not for use in diagnostic or therapeutic procedures.

RPL4 Antibody (C-Term) - Protein Information

Name RPL4

Synonyms RPL1

Function Component of the large ribosomal subunit. The ribosome is a large ribonucleoprotein complex responsible for the synthesis of proteins in the cell.

Cellular Location

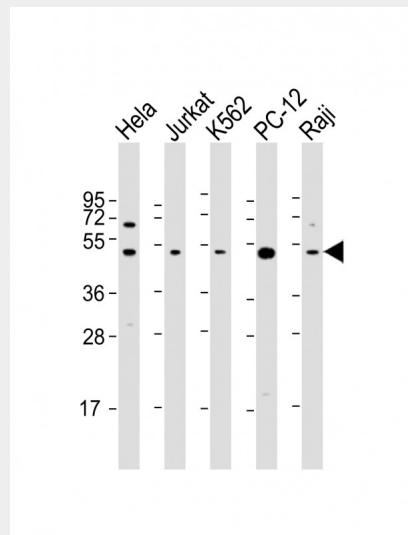
Cytoplasm.

RPL4 Antibody (C-Term) - Protocols

Provided below are standard protocols that you may find useful for product applications.

- [Western Blot](#)
- [Blocking Peptides](#)
- [Dot Blot](#)
- [Immunohistochemistry](#)
- [Immunofluorescence](#)
- [Immunoprecipitation](#)
- [Flow Cytometry](#)
- [Cell Culture](#)

RPL4 Antibody (C-Term) - Images



All lanes : Anti-RPL4 Antibody (C-Term) at 1:2000 dilution Lane 1: HeLa whole cell lysate Lane 2: Jurkat whole cell lysate Lane 3: K562 whole cell lysate Lane 4: PC-12 whole cell lysate Lane 5: Raji whole cell lysate Lysates/proteins at 20 µg per lane. Secondary Goat Anti-Rabbit IgG, (H+L), Peroxidase conjugated at 1/10000 dilution. Predicted band size : 48 kDa Blocking/Dilution buffer: 5% NFDM/TBST.

RPL4 Antibody (C-Term) - References

- Bagni C.,et al.Biochim. Biophys. Acta 1216:475-478(1993).
Bagni C.,et al.Submitted (JAN-2004) to the EMBL/GenBank/DDBJ databases.
Kato S.,et al.Submitted (NOV-1993) to the EMBL/GenBank/DDBJ databases.
Yoshihama M.,et al.Genome Res. 12:379-390(2002).
Ota T.,et al.Nat. Genet. 36:40-45(2004).