

GLT6D1 Antibody (Center)
Purified Rabbit Polyclonal Antibody (Pab)
Catalog # AP22123c**Specification**

GLT6D1 Antibody (Center) - Product Information

Application	WB,E
Primary Accession	Q7Z4J2
Reactivity	Human
Host	Rabbit
Clonality	polyclonal
Isotype	Rabbit IgG
Calculated MW	32608

GLT6D1 Antibody (Center) - Additional Information**Gene ID** 360203**Other Names**

Glycosyltransferase 6 domain-containing protein 1, 2.4.1.-, Galactosyltransferase family 6 domain-containing 1, GLT6D1, GLTDC1, GT6M7

Target/Specificity

This GLT6D1 antibody is generated from a rabbit immunized with a KLH conjugated synthetic peptide between 100-133 amino acids from the Central region of human GLT6D1.

Dilution

WB~~1:2000

E~~Use at an assay dependent concentration.

Format

Purified polyclonal antibody supplied in PBS with 0.09% (W/V) sodium azide. This antibody is purified through a protein A column, followed by peptide affinity purification.

Storage

Maintain refrigerated at 2-8°C for up to 2 weeks. For long term storage store at -20°C in small aliquots to prevent freeze-thaw cycles.

Precautions

GLT6D1 Antibody (Center) is for research use only and not for use in diagnostic or therapeutic procedures.

GLT6D1 Antibody (Center) - Protein Information**Name** GLT6D1**Synonyms** GLTDC1, GT6M7

Cellular Location

Membrane; Single-pass type II membrane protein

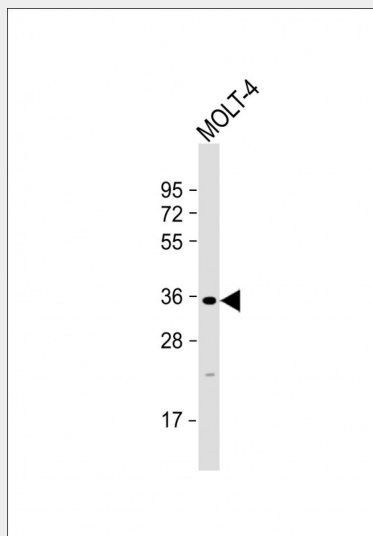
Tissue Location

Expressed in both healthy and inflamed gingival tissue samples at similar levels, with higher expression in the gingival connective tissue compared to gingival epithelium. Strongest expression in testis, followed by leukocytes

GLT6D1 Antibody (Center) - Protocols

Provided below are standard protocols that you may find useful for product applications.

- [Western Blot](#)
- [Blocking Peptides](#)
- [Dot Blot](#)
- [Immunohistochemistry](#)
- [Immunofluorescence](#)
- [Immunoprecipitation](#)
- [Flow Cytometry](#)
- [Cell Culture](#)

GLT6D1 Antibody (Center) - Images

Anti-GLT6D1 Antibody (Center) at 1:2000 dilution + MOLT-4 whole cell lysate Lysates/proteins at 20 µg per lane. Secondary Goat Anti-Rabbit IgG, (H+L), Peroxidase conjugated at 1/10000 dilution. Predicted band size : 36 kDa Blocking/Dilution buffer: 5% NFDM/TBST.

GLT6D1 Antibody (Center) - References

Shan Y.X.,et al.Submitted (JUL-2003) to the EMBL/GenBank/DDBJ databases.
Humphray S.J.,et al.Nature 429:369-374(2004).
Schaefer A.S.,et al.Hum. Mol. Genet. 19:553-562(2010).
Casals F.,et al.Glycobiology 19:583-591(2009).