

ME1 Antibody (N-Term)
Purified Rabbit Polyclonal Antibody (Pab)
Catalog # AP22134a**Specification**

ME1 Antibody (N-Term) - Product Information

Application	WB,E
Primary Accession	P48163
Reactivity	Human
Host	Rabbit
Clonality	polyclonal
Isotype	Rabbit IgG
Calculated MW	64150

ME1 Antibody (N-Term) - Additional Information**Gene ID** 4199**Other Names**

NADP-dependent malic enzyme, NADP-ME, 1.1.1.40, Malic enzyme 1, ME1

Target/Specificity

This ME1 antibody is generated from a rabbit immunized with a KLH conjugated synthetic peptide between 37-70 amino acids from human ME1.

Dilution

WB~~1:2000

E~~Use at an assay dependent concentration.

Format

Purified polyclonal antibody supplied in PBS with 0.09% (W/V) sodium azide. This antibody is purified through a protein A column, followed by peptide affinity purification.

Storage

Maintain refrigerated at 2-8°C for up to 2 weeks. For long term storage store at -20°C in small aliquots to prevent freeze-thaw cycles.

Precautions

ME1 Antibody (N-Term) is for research use only and not for use in diagnostic or therapeutic procedures.

ME1 Antibody (N-Term) - Protein Information**Name** ME1 ([HGNC:6983](#))

Function Catalyzes the oxidative decarboxylation of (S)-malate in the presence of NADP(+) and divalent metal ions, and decarboxylation of oxaloacetate.

Cellular Location

Cytoplasm.

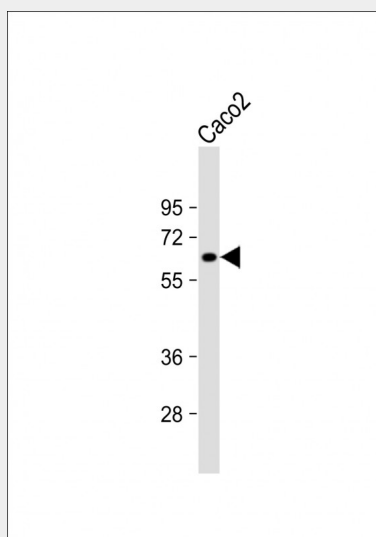
Tissue Location

Expressed in all tissues tested including liver, placenta and white adipose tissue.

ME1 Antibody (N-Term) - Protocols

Provided below are standard protocols that you may find useful for product applications.

- [Western Blot](#)
- [Blocking Peptides](#)
- [Dot Blot](#)
- [Immunohistochemistry](#)
- [Immunofluorescence](#)
- [Immunoprecipitation](#)
- [Flow Cytometry](#)
- [Cell Culture](#)

ME1 Antibody (N-Term) - Images

Anti-ME1 Antibody (N-Term) at 1:2000 dilution + Caco2 whole cell lysate Lysates/proteins at 20 µg per lane. Secondary Goat Anti-Rabbit IgG, (H+L), Peroxidase conjugated at 1/10000 dilution. Predicted band size : 64 kDa Blocking/Dilution buffer: 5% NFDM/TBST.

ME1 Antibody (N-Term) - References

Loeber G.,et al.FEBS Lett. 344:181-186(1994).
Gonzalez-Manchon C.,et al.Gene 159:255-260(1995).
Ota T.,et al.Nat. Genet. 36:40-45(2004).
Totoki Y.,et al.Submitted (APR-2005) to the EMBL/GenBank/DBJ databases.
Mungall A.J.,et al.Nature 425:805-811(2003).