

**CHTF8 Antibody (C-Term)**  
**Purified Rabbit Polyclonal Antibody (Pab)**  
**Catalog # AP22136b**

**Specification**

---

**CHTF8 Antibody (C-Term) - Product Information**

Application	WB,E
Primary Accession	<a href="#">P0CG12</a>
Reactivity	Human
Host	Rabbit
Clonality	polyclonal
Isotype	Rabbit IgG
Calculated MW	51391

**CHTF8 Antibody (C-Term) - Additional Information**

**Other Names**

Chromosome transmission fidelity protein 8 homolog isoform 2, Decreased expression in renal and prostate cancer protein, CHTF8, DERP

**Target/Specificity**

This CHTF8 antibody is generated from a rabbit immunized with a KLH conjugated synthetic peptide between 344-377 amino acids from human CHTF8.

**Dilution**

WB~~1:2000

**Format**

Purified polyclonal antibody supplied in PBS with 0.09% (W/V) sodium azide. This antibody is purified through a protein A column, followed by peptide affinity purification.

**Storage**

Maintain refrigerated at 2-8°C for up to 2 weeks. For long term storage store at -20°C in small aliquots to prevent freeze-thaw cycles.

**Precautions**

CHTF8 Antibody (C-Term) is for research use only and not for use in diagnostic or therapeutic procedures.

**CHTF8 Antibody (C-Term) - Protein Information**

**Name** DERP ([HGNC:54084](#))

**Function** Potential tumor suppressor. Inhibits prostate tumor cell growth, when overexpressed.

**Cellular Location**

Nucleus.

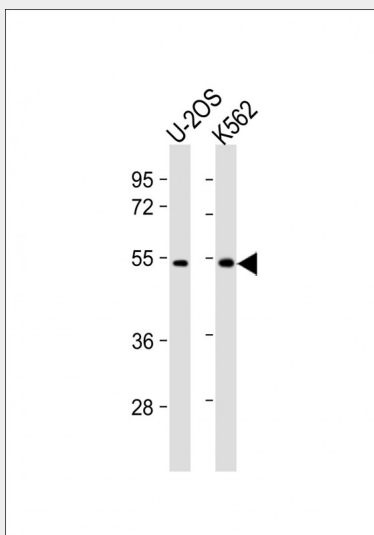
**Tissue Location**

Ubiquitously expressed, with abundant expression in kidney, skeletal muscle, testis, liver, ovary, and heart and moderate expression in prostate. Expression is significantly reduced in renal and prostate tumors. No differential expression in breast cancer cells, between lobular carcinoma and normal lobules

**CHTF8 Antibody (C-Term) - Protocols**

Provided below are standard protocols that you may find useful for product applications.

- [Western Blot](#)
- [Blocking Peptides](#)
- [Dot Blot](#)
- [Immunohistochemistry](#)
- [Immunofluorescence](#)
- [Immunoprecipitation](#)
- [Flow Cytometry](#)
- [Cell Culture](#)

**CHTF8 Antibody (C-Term) - Images**

All lanes : Anti-CHTF8 Antibody (C-Term) at 1:2000 dilution Lane 1: U-2OS whole cell lysate Lane 2: K562 whole cell lysate Lysates/proteins at 20 µg per lane. Secondary Goat Anti-Rabbit IgG, (H+L), Peroxidase conjugated at 1/10000 dilution. Predicted band size : 51 kDa Blocking/Dilution buffer: 5% NFDM/TBST.

**CHTF8 Antibody (C-Term) - Background**

Potential tumor suppressor. Inhibits prostate tumor cell growth, when overexpressed.

**CHTF8 Antibody (C-Term) - References**

- Bechtel S.,et al.BMC Genomics 8:399-399(2007).  
Martin J.,et al.Nature 432:988-994(2004).  
Mural R.J.,et al.Submitted (JUL-2005) to the EMBL/GenBank/DDBJ databases.  
Sun M.,et al.Mol. Med. 8:655-663(2002).  
Green A.R.,et al.Breast Cancer Res. Treat. 113:59-66(2009).

