

V5
Purified Rabbit Polyclonal Antibody (Pab)
Catalog # AP22142a**Specification**

V5 - Product Information

Application	WB,E
Primary Accession	NA
Host	Rabbit
Clonality	polyclonal
Isotype	Rabbit IgG

V5 - Additional Information**Target/Specificity**

This antibody is generated from a rabbit immunized with a KLH conjugated synthetic peptide between NA amino acids from human.

Dilution

WB~~1:2000
E~~Use at an assay dependent concentration.

Format

Purified polyclonal antibody supplied in PBS with 0.09% (W/V) sodium azide. This antibody is purified through a protein A column, followed by peptide affinity purification.

Storage

Maintain refrigerated at 2-8°C for up to 2 weeks. For long term storage store at -20°C in small aliquots to prevent freeze-thaw cycles.

Precautions

V5 is for research use only and not for use in diagnostic or therapeutic procedures.

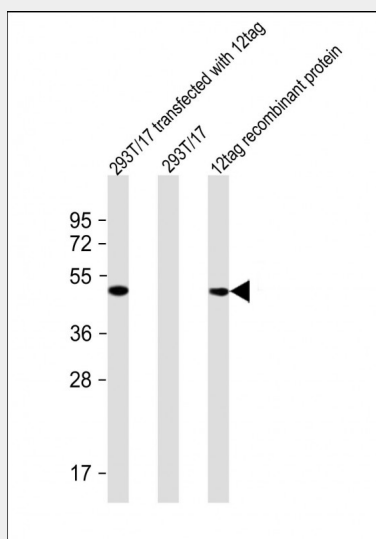
V5 - Protein Information**V5 - Protocols**

Provided below are standard protocols that you may find useful for product applications.

- [Western Blot](#)
- [Blocking Peptides](#)
- [Dot Blot](#)
- [Immunohistochemistry](#)
- [Immunofluorescence](#)
- [Immunoprecipitation](#)
- [Flow Cytometry](#)

- [Cell Culture](#)

V5 - Images



All lanes : Anti-GIT1 Antibody at 1:1000 dilution Lane 1: 293T/17 transfected with 12 tag lysate Lane 2: 293T/17 whole cell lysate Lane 3: 12 tag recombinant protein Lysates/proteins at 20 μ g per lane. Secondary Goat Anti-Rabbit IgG, (H+L), Peroxidase conjugated at 1/10000 dilution. Predicted band size :45-50 kDa Blocking/Dilution buffer: 5% NFDM/TBST.