

LCP2 Antibody (Center)
Purified Rabbit Polyclonal Antibody (Pab)
Catalog # AP22146c**Specification**

LCP2 Antibody (Center) - Product Information

Application	WB,E
Primary Accession	Q13094
Other Accession	Q60787
Reactivity	Human
Predicted	Mouse
Host	Rabbit
Clonality	polyclonal
Isotype	Rabbit IgG
Calculated MW	60188

LCP2 Antibody (Center) - Additional Information**Gene ID** 3937**Other Names**

Lymphocyte cytosolic protein 2, SH2 domain-containing leukocyte protein of 76 kDa, SLP-76 tyrosine phosphoprotein, SLP76, LCP2

Target/Specificity

This LCP2 antibody is generated from a rabbit immunized with a KLH conjugated synthetic peptide between 303-337 amino acids from the Central region of human LCP2.

Dilution

WB~~1:2000

E~~Use at an assay dependent concentration.

Format

Purified polyclonal antibody supplied in PBS with 0.09% (W/V) sodium azide. This antibody is purified through a protein A column, followed by peptide affinity purification.

Storage

Maintain refrigerated at 2-8°C for up to 2 weeks. For long term storage store at -20°C in small aliquots to prevent freeze-thaw cycles.

Precautions

LCP2 Antibody (Center) is for research use only and not for use in diagnostic or therapeutic procedures.

LCP2 Antibody (Center) - Protein Information**Name** LCP2

Function Adapter protein primarily involved in signaling pathways within T-cells, as well as other immune cells such as platelets, mast cells, and natural killer (NK) cells (PubMed:[11313406](#), PubMed:[33159816](#)). Plays a crucial role for transducing signal from the T-cell receptor (TCR) after antigen recognition leading to T-cell activation. Mechanistically, once phosphorylated by the kinase ZAP70, mediates interactions with the guanine-nucleotide exchange factor VAV1, the adapter protein NCK and the kinase ITK (PubMed:[8673706](#), PubMed:[8702662](#)). In turn, stimulates the activation of PKC-theta/PRKCQ and NF-kappa-B transcriptional activity in response to CD3 and CD28 costimulation (PubMed:[11313406](#)). Also plays an essential role in AGER- induced signaling pathways including p38 MAPK and ERK1/2 activation leading to cytokine release and pro-inflammatory responses (PubMed:[33436632](#)).

Cellular Location

Cytoplasm.

Tissue Location

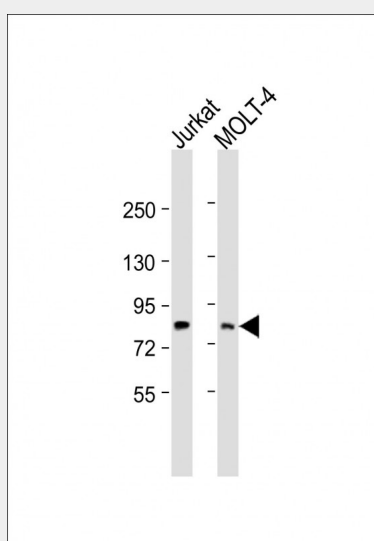
Highly expressed in spleen, thymus and peripheral blood leukocytes. Highly expressed also in T-cell and monocytic cell lines, expressed at lower level in B-cell lines. Not detected in fibroblast or neuroblastoma cell lines

LCP2 Antibody (Center) - Protocols

Provided below are standard protocols that you may find useful for product applications.

- [Western Blot](#)
- [Blocking Peptides](#)
- [Dot Blot](#)
- [Immunohistochemistry](#)
- [Immunofluorescence](#)
- [Immunoprecipitation](#)
- [Flow Cytometry](#)
- [Cell Culture](#)

LCP2 Antibody (Center) - Images



All lanes : Anti-LCP2 Antibody (Center) at 1:2000 dilution Lane 1: Jurkat whole cell lysate Lane 2: MOLT-4 whole cell lysate Lysates/proteins at 20 µg per lane. Secondary Goat Anti-Rabbit IgG, (H+L), Peroxidase conjugated at 1/10000 dilution. Predicted band size : 60 kDa Blocking/Dilution

buffer: 5% NFDM/TBST.

LCP2 Antibody (Center) - Background

Involved in T-cell antigen receptor mediated signaling.

LCP2 Antibody (Center) - References

Jackman J.K.,et al.J. Biol. Chem. 270:7029-7032(1995).
Kalnine N.,et al.Submitted (MAY-2003) to the EMBL/GenBank/DDBJ databases.
Ota T.,et al.Nat. Genet. 36:40-45(2004).
Mural R.J.,et al.Submitted (SEP-2005) to the EMBL/GenBank/DDBJ databases.
Moog-Lutz C.,et al.J. Biol. Chem. 276:22375-22381(2001).