

**TAS2R50 Antibody (C-Term)**  
**Purified Rabbit Polyclonal Antibody (Pab)**  
**Catalog # AP22161b****Specification**

---

**TAS2R50 Antibody (C-Term) - Product Information**

Application	WB,E
Primary Accession	<a href="#">P59544</a>
Other Accession	<a href="#">Q646A1</a> , <a href="#">Q646E4</a> , <a href="#">Q646C3</a> , <a href="#">Q645V7</a>
Reactivity	Human
Host	Rabbit
Clonality	polyclonal
Isotype	Rabbit IgG
Calculated MW	34558

**TAS2R50 Antibody (C-Term) - Additional Information****Gene ID** 259296**Other Names**

Taste receptor type 2 member 50, T2R50, Taste receptor type 2 member 51, T2R51, TAS2R50

**Target/Specificity**

This TAS2R50 antibody is generated from a rabbit immunized with a KLH conjugated synthetic peptide between 198-222 amino acids from human TAS2R50.

**Dilution**

WB~~1:1000

E~~Use at an assay dependent concentration.

**Format**

Purified polyclonal antibody supplied in PBS with 0.09% (W/V) sodium azide. This antibody is purified through a protein A column, followed by peptide affinity purification.

**Storage**

Maintain refrigerated at 2-8°C for up to 2 weeks. For long term storage store at -20°C in small aliquots to prevent freeze-thaw cycles.

**Precautions**

TAS2R50 Antibody (C-Term) is for research use only and not for use in diagnostic or therapeutic procedures.

**TAS2R50 Antibody (C-Term) - Protein Information****Name** TAS2R50**Function** Receptor that may play a role in the perception of bitterness and is gustducin-linked. May play a role in sensing the chemical composition of the gastrointestinal content. The activity of

this receptor may stimulate alpha gustducin, mediate PLC-beta-2 activation and lead to the gating of TRPM5 (By similarity).

**Cellular Location**

Membrane; Multi-pass membrane protein.

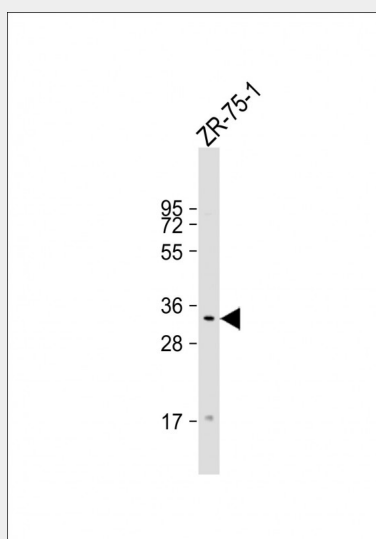
**Tissue Location**

Expressed in subsets of taste receptor cells of the tongue and exclusively in gustducin-positive cells

**TAS2R50 Antibody (C-Term) - Protocols**

Provided below are standard protocols that you may find useful for product applications.

- [Western Blot](#)
- [Blocking Peptides](#)
- [Dot Blot](#)
- [Immunohistochemistry](#)
- [Immunofluorescence](#)
- [Immunoprecipitation](#)
- [Flow Cytometry](#)
- [Cell Culture](#)

**TAS2R50 Antibody (C-Term) - Images**

Anti-TAS2R50 Antibody (C-Term) at 1:1000 dilution + ZR-75-1 whole cell lysate Lysates/proteins at 20 µg per lane. Secondary Goat Anti-Rabbit IgG, (H+L), Peroxidase conjugated at 1/10000 dilution. Predicted band size : 35 kDa Blocking/Dilution buffer: 5% NFDM/TBST.

**TAS2R50 Antibody (C-Term) - Background**

Receptor that may play a role in the perception of bitterness and is gustducin-linked. May play a role in sensing the chemical composition of the gastrointestinal content. The activity of this receptor may stimulate alpha gustducin, mediate PLC-beta-2 activation and lead to the gating of TRPM5 (By similarity).

**TAS2R50 Antibody (C-Term) - References**

Bufe B.,et al.Nat. Genet. 32:397-401(2002).  
Conte C.,et al.Cytogenet. Genome Res. 98:45-53(2002).  
Fischer A.,et al.Mol. Biol. Evol. 22:432-436(2005).  
Scherer S.E.,et al.Nature 440:346-351(2006).  
Montmayeur J.-P.,et al.Curr. Opin. Neurobiol. 12:366-371(2002).