

**COPS7B Antibody (Center)**  
**Purified Rabbit Polyclonal Antibody (Pab)**  
**Catalog # AP22164c****Specification**

---

**COPS7B Antibody (Center) - Product Information**

Application	WB,E
Primary Accession	<a href="#">Q9H9Q2</a>
Other Accession	<a href="#">Q2KI56</a>
Reactivity	Human
Predicted	Bovine
Host	Rabbit
Clonality	polyclonal
Isotype	Rabbit IgG
Calculated MW	29622

**COPS7B Antibody (Center) - Additional Information****Gene ID** 64708**Other Names**

COP9 signalosome complex subunit 7b, SGN7b, Signalosome subunit 7b, JAB1-containing signalosome subunit 7b, COPS7B, CSN7B

**Target/Specificity**

This COPS7B antibody is generated from a rabbit immunized with a KLH conjugated synthetic peptide between 223-257 amino acids from the Central region of human COPS7B.

**Dilution**

WB~~1:500-1:1000

E~~Use at an assay dependent concentration.

**Format**

Purified polyclonal antibody supplied in PBS with 0.09% (W/V) sodium azide. This antibody is purified through a protein A column, followed by peptide affinity purification.

**Storage**

Maintain refrigerated at 2-8°C for up to 2 weeks. For long term storage store at -20°C in small aliquots to prevent freeze-thaw cycles.

**Precautions**

COPS7B Antibody (Center) is for research use only and not for use in diagnostic or therapeutic procedures.

**COPS7B Antibody (Center) - Protein Information****Name** COPS7B

## Synonyms CSN7B

**Function** Component of the COP9 signalosome complex (CSN), a complex involved in various cellular and developmental processes. The CSN complex is an essential regulator of the ubiquitin (Ubl) conjugation pathway by mediating the deneddylation of the cullin subunits of SCF- type E3 ligase complexes, leading to decrease the Ubl ligase activity of SCF-type complexes such as SCF, CSA or DDB2. The complex is also involved in phosphorylation of p53/TP53, JUN, I-kappa-B-alpha/NFKBIA, ITPK1 and IRF8/ICSBP, possibly via its association with CK2 and PKD kinases. CSN-dependent phosphorylation of TP53 and JUN promotes and protects degradation by the Ubl system, respectively.

## Cellular Location

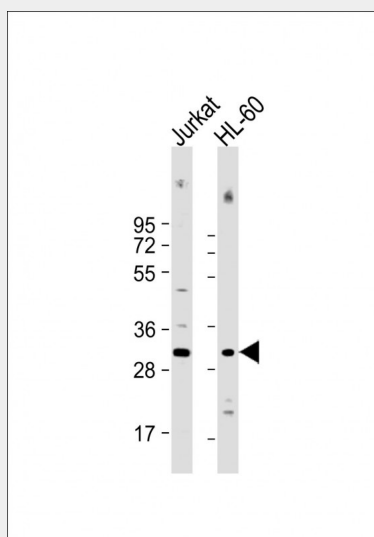
Cytoplasm. Nucleus.

## COPS7B Antibody (Center) - Protocols

Provided below are standard protocols that you may find useful for product applications.

- [Western Blot](#)
- [Blocking Peptides](#)
- [Dot Blot](#)
- [Immunohistochemistry](#)
- [Immunofluorescence](#)
- [Immunoprecipitation](#)
- [Flow Cytometry](#)
- [Cell Culture](#)

## COPS7B Antibody (Center) - Images



All lanes : Anti-COPS7B Antibody (Center) at 1:500-1:1000 dilution Lane 1: Jurkat whole cell lysate Lane 2: HL-60 whole cell lysate Lysates/proteins at 20 µg per lane. Secondary Goat Anti-Rabbit IgG, (H+L), Peroxidase conjugated at 1/10000 dilution. Predicted band size : 30 kDa Blocking/Dilution buffer: 5% NFDM/TBST.

## COPS7B Antibody (Center) - Background

Component of the COP9 signalosome complex (CSN), a complex involved in various cellular and

developmental processes. The CSN complex is an essential regulator of the ubiquitin (Ubl) conjugation pathway by mediating the deneddylation of the cullin subunits of SCF-type E3 ligase complexes, leading to decrease the Ubl ligase activity of SCF-type complexes such as SCF, CSA or DDB2. The complex is also involved in phosphorylation of p53/TP53, JUN, I-kappa-B-alpha/NFKBIA, ITPK1 and IRF8/ICSBP, possibly via its association with CK2 and PKD kinases. CSN-dependent phosphorylation of TP53 and JUN promotes and protects degradation by the Ubl system, respectively.

#### **COPS7B Antibody (Center) - References**

Ota T., et al. Nat. Genet. 36:40-45(2004).  
Hillier L.W., et al. Nature 434:724-731(2005).  
Mural R.J., et al. Submitted (JUL-2005) to the EMBL/GenBank/DDBJ databases.  
Bech-Otschir D., et al. EMBO J. 20:1630-1639(2001).  
Lyapina S., et al. Science 292:1382-1385(2001).