

**G6PC3 Antibody (C-Term)**  
**Purified Rabbit Polyclonal Antibody (Pab)**  
**Catalog # AP22167b****Specification**

---

**G6PC3 Antibody (C-Term) - Product Information**

|                   |                        |
|-------------------|------------------------|
| Application       | WB,E                   |
| Primary Accession | <a href="#">Q9BUM1</a> |
| Reactivity        | Human, Mouse           |
| Host              | Rabbit                 |
| Clonality         | polyclonal             |
| Isotype           | Rabbit IgG             |
| Calculated MW     | 38735                  |

**G6PC3 Antibody (C-Term) - Additional Information****Gene ID** 92579**Other Names**

Glucose-6-phosphatase 3, G-6-Pase 3, G6Pase 3, 3.1.3.9, Glucose-6-phosphatase beta, G6Pase-beta, Ubiquitous glucose-6-phosphatase catalytic subunit-related protein, G6PC3, UGRP

**Target/Specificity**

This G6PC3 antibody is generated from a rabbit immunized with a KLH conjugated synthetic peptide between 215-246 amino acids from human G6PC3.

**Dilution**

WB~~1:1000

**Format**

Purified polyclonal antibody supplied in PBS with 0.09% (W/V) sodium azide. This antibody is purified through a protein A column, followed by peptide affinity purification.

**Storage**

Maintain refrigerated at 2-8°C for up to 2 weeks. For long term storage store at -20°C in small aliquots to prevent freeze-thaw cycles.

**Precautions**

G6PC3 Antibody (C-Term) is for research use only and not for use in diagnostic or therapeutic procedures.

**G6PC3 Antibody (C-Term) - Protein Information****Name** G6PC3**Synonyms** UGRP**Function** Hydrolyzes glucose-6-phosphate to glucose in the endoplasmic reticulum. May form with

the glucose-6-phosphate transporter (SLC37A4/G6PT) a ubiquitously expressed complex responsible for glucose production through glycogenolysis and gluconeogenesis. Probably required for normal neutrophil function.

#### Cellular Location

Endoplasmic reticulum membrane; Multi-pass membrane protein

#### Tissue Location

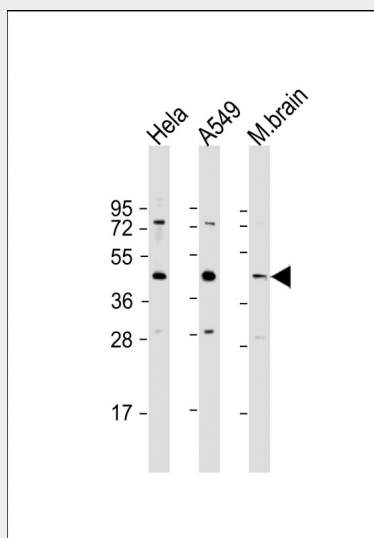
Ubiquitously expressed. Highly expressed in skeletal muscle, at intermediate levels in heart, brain, placenta, kidney, colon, thymus, spleen and pancreas. Also detected in testis, prostate, ovary, liver, lung, small intestine and peripheral blood lymphocytes.

### G6PC3 Antibody (C-Term) - Protocols

Provided below are standard protocols that you may find useful for product applications.

- [Western Blot](#)
- [Blocking Peptides](#)
- [Dot Blot](#)
- [Immunohistochemistry](#)
- [Immunofluorescence](#)
- [Immunoprecipitation](#)
- [Flow Cytometry](#)
- [Cell Culture](#)

### G6PC3 Antibody (C-Term) - Images



All lanes : Anti-G6PC3 Antibody (C-Term) at 1:1000 dilution Lane 1: HeLa whole cell lysate Lane 2: A549 whole cell lysate Lane 3: mouse brain lysate Lysates/proteins at 20 µg per lane. Secondary Goat Anti-Rabbit IgG, (H+L), Peroxidase conjugated at 1/10000 dilution. Predicted band size : 39 kDa Blocking/Dilution buffer: 5% NFDm/TBST.

### G6PC3 Antibody (C-Term) - Background

Hydrolyzes glucose-6-phosphate to glucose in the endoplasmic reticulum. May form with the glucose-6-phosphate transporter (SLC37A4/G6PT) a ubiquitously expressed complex responsible for glucose production through glycogenolysis and gluconeogenesis. Probably required for normal

neutrophil function.

#### **G6PC3 Antibody (C-Term) - References**

Mural R.J.,et al.Submitted (SEP-2005) to the EMBL/GenBank/DDBJ databases.  
Martin C.C.,et al.J. Mol. Endocrinol. 29:205-222(2002).  
Guionie O.,et al.FEBS Lett. 551:159-164(2003).  
Shieh J.-J.,et al.J. Biol. Chem. 278:47098-47103(2003).  
Ghosh A.,et al.J. Biol. Chem. 279:12479-12483(2004).