

**PTH1R Antibody (N-Term)**  
**Purified Rabbit Polyclonal Antibody (Pab)**  
**Catalog # AP22170a**

**Specification**

---

**PTH1R Antibody (N-Term) - Product Information**

Application	WB,E
Primary Accession	<a href="#">Q03431</a>
Other Accession	<a href="#">Q5RAQ1</a>
Reactivity	Human
Host	Rabbit
Clonality	polyclonal
Isotype	Rabbit IgG
Calculated MW	66361

**PTH1R Antibody (N-Term) - Additional Information**

**Gene ID** 5745

**Other Names**

Parathyroid hormone/parathyroid hormone-related peptide receptor, PTH/PTHrP type I receptor, PTH/PTHr receptor, Parathyroid hormone 1 receptor, PTH1 receptor, PTH1R, PTHR, PTHR1

**Target/Specificity**

This PTH1R antibody is generated from a rabbit immunized with a KLH conjugated synthetic peptide between 52-86 amino acids from human PTH1R.

**Dilution**

WB~~1:2000

E~~Use at an assay dependent concentration.

**Format**

Purified polyclonal antibody supplied in PBS with 0.09% (W/V) sodium azide. This antibody is purified through a protein A column, followed by peptide affinity purification.

**Storage**

Maintain refrigerated at 2-8°C for up to 2 weeks. For long term storage store at -20°C in small aliquots to prevent freeze-thaw cycles.

**Precautions**

PTH1R Antibody (N-Term) is for research use only and not for use in diagnostic or therapeutic procedures.

**PTH1R Antibody (N-Term) - Protein Information**

**Name** PTH1R {ECO:0000303|PubMed:10913300, ECO:0000312|HGNC:HGNC:9608}

**Function** G-protein-coupled receptor for parathyroid hormone (PTH) and for parathyroid

hormone-related peptide (PTHLH) (PubMed:[10913300](#), PubMed:[18375760](#), PubMed:[19674967](#), PubMed:[27160269](#), PubMed:[30975883](#), PubMed:[35932760](#), PubMed:[8397094](#)). Ligand binding causes a conformation change that triggers signaling via guanine nucleotide-binding proteins (G proteins) and modulates the activity of downstream effectors, such as adenylate cyclase (cAMP) (PubMed:[30975883](#), PubMed:[35932760](#)). PTH1R is coupled to G(s) G alpha proteins and mediates activation of adenylate cyclase activity (PubMed:[20172855](#), PubMed:[30975883](#), PubMed:[35932760](#)). PTHLH dissociates from PTH1R more rapidly than PTH; as consequence, the cAMP response induced by PTHLH decays faster than the response induced by PTH (PubMed:[35932760](#)).

#### Cellular Location

Cell membrane; Multi-pass membrane protein

#### Tissue Location

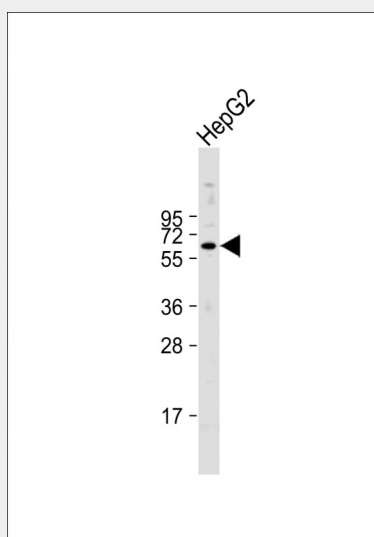
Expressed in most tissues. Most abundant in kidney, bone and liver.

### PTH1R Antibody (N-Term) - Protocols

Provided below are standard protocols that you may find useful for product applications.

- [Western Blot](#)
- [Blocking Peptides](#)
- [Dot Blot](#)
- [Immunohistochemistry](#)
- [Immunofluorescence](#)
- [Immunoprecipitation](#)
- [Flow Cytometry](#)
- [Cell Culture](#)

### PTH1R Antibody (N-Term) - Images



Anti-PTH1R Antibody (N-Term) at 1:2000 dilution + HepG2 whole cell lysate Lysates/proteins at 20 µg per lane. Secondary Goat Anti-Rabbit IgG, (H+L), Peroxidase conjugated at 1/10000 dilution. Predicted band size : 66 kDa Blocking/Dilution buffer: 5% NFDM/TBST.

### PTH1R Antibody (N-Term) - Background

This is a receptor for parathyroid hormone and for parathyroid hormone-related peptide. The activity of this receptor is mediated by G proteins which activate adenylyl cyclase and also a phosphatidylinositol-calcium second messenger system.

#### **PTH1R Antibody (N-Term) - References**

Schipani E.,et al.Endocrinology 132:2157-2165(1993).  
Schneider H.,et al.Eur. J. Pharmacol. 246:149-155(1993).  
Schipani E.,et al.J. Clin. Endocrinol. Metab. 80:1611-1621(1995).  
Levine M.A.,et al.Submitted (NOV-1994) to the EMBL/GenBank/DDBJ databases.  
King M.M.,et al.Submitted (OCT-2003) to the EMBL/GenBank/DDBJ databases.