

CCDC144A Antibody (C-Term)
Purified Rabbit Polyclonal Antibody (Pab)
Catalog # AP22180b**Specification**

CCDC144A Antibody (C-Term) - Product Information

Application	WB,E
Primary Accession	A2RUR9
Reactivity	Human
Host	Rabbit
Clonality	polyclonal
Isotype	Rabbit IgG
Calculated MW	165125

CCDC144A Antibody (C-Term) - Additional Information**Gene ID** 9720**Target/Specificity**

This CCDC144A antibody is generated from a rabbit immunized with a KLH conjugated synthetic peptide between 1257-1289 amino acids from human CCDC144A.

Dilution

WB~~1:2000

Format

Purified polyclonal antibody supplied in PBS with 0.09% (W/V) sodium azide. This antibody is purified through a protein A column, followed by peptide affinity purification.

Storage

Maintain refrigerated at 2-8°C for up to 2 weeks. For long term storage store at -20°C in small aliquots to prevent freeze-thaw cycles.

Precautions

CCDC144A Antibody (C-Term) is for research use only and not for use in diagnostic or therapeutic procedures.

CCDC144A Antibody (C-Term) - Protein Information**Name** CCDC144A**Synonyms** KIAA0565

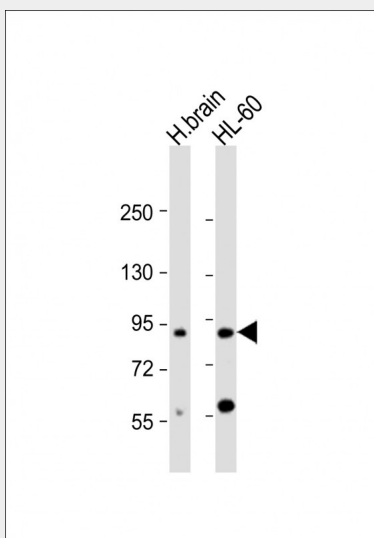
Function May play a role in preventing the formation of kidney stones through inhibition of calcium oxalate monohydrate (COM) crystallization, attenuating COM-induced apoptotic injury to renal epithelial cells (PubMed:[32991878](#)). May exhibit antilithiatic (preventing the formation of kidney stones) activity through crystal binding, hindering the crystal attachment to renal epithelial cells, a pre-requisite to initiate inflammatory response (PubMed:[32991878](#)).

CCDC144A Antibody (C-Term) - Protocols

Provided below are standard protocols that you may find useful for product applications.

- [Western Blot](#)
- [Blocking Peptides](#)
- [Dot Blot](#)
- [Immunohistochemistry](#)
- [Immunofluorescence](#)
- [Immunoprecipitation](#)
- [Flow Cytometry](#)
- [Cell Culture](#)

CCDC144A Antibody (C-Term) - Images



All lanes : Anti-CCDC144A Antibody (C-Term) at 1:2000 dilution Lane 1: human brain lysate Lane 2: HL-60 whole cell lysate Lysates/proteins at 20 µg per lane. Secondary Goat Anti-Rabbit IgG, (H+L), Peroxidase conjugated at 1/10000 dilution. Predicted band size : 165 kDa Blocking/Dilution buffer: 5% NFDM/TBST.