

**TOR1AIP1 Antibody (N-Term)**  
**Purified Rabbit Polyclonal Antibody (Pab)**  
**Catalog # AP22181a****Specification**

---

**TOR1AIP1 Antibody (N-Term) - Product Information**

Application	WB,E
Primary Accession	<a href="#">Q5JTV8</a>
Other Accession	<a href="#">Q921T2</a> , <a href="#">Q5POX1</a>
Reactivity	Mouse
Predicted	Human, Rat
Host	Rabbit
Clonality	polyclonal
Isotype	Rabbit IgG

**TOR1AIP1 Antibody (N-Term) - Additional Information****Gene ID** 26092**Other Names**

Torsin-1A-interacting protein 1, Lamin-associated protein 1B, LAP1B, TOR1AIP1, LAP1

**Target/Specificity**

This TOR1AIP1 antibody is generated from a rabbit immunized with a KLH conjugated synthetic peptide between 42-76 amino acids from human TOR1AIP1.

**Dilution**

WB~~1:2000

**Format**

Purified polyclonal antibody supplied in PBS with 0.09% (W/V) sodium azide. This antibody is purified through a protein A column, followed by peptide affinity purification.

**Storage**

Maintain refrigerated at 2-8°C for up to 2 weeks. For long term storage store at -20°C in small aliquots to prevent freeze-thaw cycles.

**Precautions**

TOR1AIP1 Antibody (N-Term) is for research use only and not for use in diagnostic or therapeutic procedures.

**TOR1AIP1 Antibody (N-Term) - Protein Information****Name** TOR1AIP1**Synonyms** LAP1**Function** Required for nuclear membrane integrity. Induces TOR1A and TOR1B ATPase activity

and is required for their location on the nuclear membrane. Binds to A- and B-type lamins. Possible role in membrane attachment and assembly of the nuclear lamina.

#### Cellular Location

Nucleus inner membrane; Single-pass membrane protein

#### Tissue Location

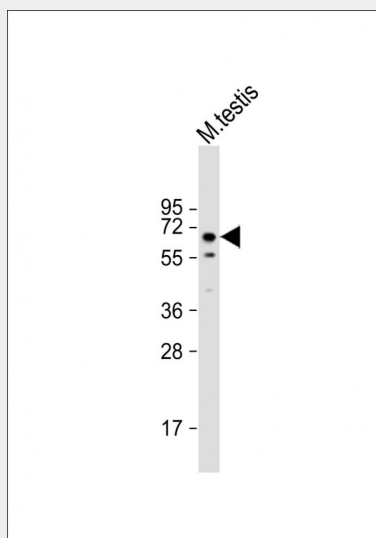
Expressed in muscle, liver and kidney. [Isoform 4]: Expressed at higher levels than isoform 1 in lung, kidney and spleen (at protein level). Expressed at lower levels than isoform 1 in liver, brain and heart (at protein level). Similar levels of isoforms 1 and 4 are observed in ovary, testis and pancreas (at protein level).

### TOR1AIP1 Antibody (N-Term) - Protocols

Provided below are standard protocols that you may find useful for product applications.

- [Western Blot](#)
- [Blocking Peptides](#)
- [Dot Blot](#)
- [Immunohistochemistry](#)
- [Immunofluorescence](#)
- [Immunoprecipitation](#)
- [Flow Cytometry](#)
- [Cell Culture](#)

### TOR1AIP1 Antibody (N-Term) - Images



Anti-TOR1AIP1 Antibody (N-Term) at 1:2000 dilution + mouse testis lysate Lysates/proteins at 20 µg per lane. Secondary Goat Anti-Rabbit IgG, (H+L), Peroxidase conjugated at 1/10000 dilution. Predicted band size : 66 kDa Blocking/Dilution buffer: 5% NFDm/TBST.

### TOR1AIP1 Antibody (N-Term) - Background

Required for nuclear membrane integrity. Induces TOR1A and TOR1B ATPase activity and is required for their location on the nuclear membrane. Binds to A- and B-type lamins. Possible role in membrane attachment and assembly of the nuclear lamina.

**TOR1AIP1 Antibody (N-Term) - References**

Ota T.,et al.Nat. Genet. 36:40-45(2004).  
Gregory S.G.,et al.Nature 441:315-321(2006).  
Bechtel S.,et al.BMC Genomics 8:399-399(2007).  
Kondo Y.,et al.Biochem. Biophys. Res. Commun. 294:770-778(2002).  
Goodchild R.E.,et al.J. Cell Biol. 168:855-862(2005).