

**ACSS1 Antibody (N-Term)**  
**Purified Rabbit Polyclonal Antibody (Pab)**  
**Catalog # AP22196a****Specification**

---

**ACSS1 Antibody (N-Term) - Product Information**

Application	WB,E
Primary Accession	<a href="#">Q9NUB1</a>
Reactivity	Human
Host	Rabbit
Clonality	polyclonal
Isotype	Rabbit IgG
Calculated MW	74857

**ACSS1 Antibody (N-Term) - Additional Information****Gene ID** 84532**Other Names**

Acetyl-coenzyme A synthetase 2-like, mitochondrial, 6.2.1.1, Acetate--CoA ligase 2, Acetyl-CoA synthetase 2, AceCS2, Acyl-CoA synthetase short-chain family member 1, ACSS1, ACAS2L, KIAA1846

**Target/Specificity**

This ACSS1 antibody is generated from a rabbit immunized with a KLH conjugated synthetic peptide between 94-125 amino acids from human ACSS1.

**Dilution**

WB~~1:2000

E~~Use at an assay dependent concentration.

**Format**

Purified polyclonal antibody supplied in PBS with 0.09% (W/V) sodium azide. This antibody is purified through a protein A column, followed by peptide affinity purification.

**Storage**

Maintain refrigerated at 2-8°C for up to 2 weeks. For long term storage store at -20°C in small aliquots to prevent freeze-thaw cycles.

**Precautions**

ACSS1 Antibody (N-Term) is for research use only and not for use in diagnostic or therapeutic procedures.

**ACSS1 Antibody (N-Term) - Protein Information****Name** ACSS1**Synonyms** ACAS2L, KIAA1846

**Function** Catalyzes the synthesis of acetyl-CoA from short-chain fatty acids (PubMed:[16788062](#)). Acetate is the preferred substrate (PubMed:[16788062](#)). Can also utilize propionate with a much lower affinity (By similarity). Provides acetyl-CoA that is utilized mainly for oxidation under ketogenic conditions (By similarity). Involved in thermogenesis under ketogenic conditions, using acetate as a vital fuel when carbohydrate availability is insufficient (By similarity).

**Cellular Location**

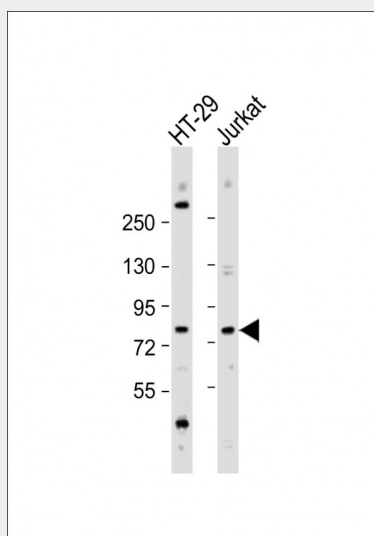
Mitochondrion matrix

**ACSS1 Antibody (N-Term) - Protocols**

Provided below are standard protocols that you may find useful for product applications.

- [Western Blot](#)
- [Blocking Peptides](#)
- [Dot Blot](#)
- [Immunohistochemistry](#)
- [Immunofluorescence](#)
- [Immunoprecipitation](#)
- [Flow Cytometry](#)
- [Cell Culture](#)

**ACSS1 Antibody (N-Term) - Images**



All lanes : Anti-ACSS1 Antibody (N-Term) at 1:2000 dilution Lane 1: HT-29 whole cell lysate Lane 2: Jurkat whole cell lysate Lysates/proteins at 20 µg per lane. Secondary Goat Anti-Rabbit IgG, (H+L), Peroxidase conjugated at 1/10000 dilution. Predicted band size : 75 kDa Blocking/Dilution buffer: 5% NFDM/TBST.

**ACSS1 Antibody (N-Term) - Background**

Important for maintaining normal body temperature during fasting and for energy homeostasis. Essential for energy expenditure under ketogenic conditions (By similarity). Converts acetate to acetyl-CoA so that it can be used for oxidation through the tricarboxylic cycle to produce ATP and CO(2).

**ACSS1 Antibody (N-Term) - References**

Ota T.,et al.Nat. Genet. 36:40-45(2004).  
Deloukas P.,et al.Nature 414:865-871(2001).  
Mural R.J.,et al.Submitted (SEP-2005) to the EMBL/GenBank/DDBJ databases.  
Nagase T.,et al.DNA Res. 8:85-95(2001).  
Nakajima D.,et al.DNA Res. 9:99-106(2002).