

SH3PXD2B Antibody (Center)
Purified Rabbit Polyclonal Antibody (Pab)
Catalog # AP22209c**Specification**

SH3PXD2B Antibody (Center) - Product Information

Application	WB,E
Primary Accession	A1X283
Reactivity	Human
Host	Rabbit
Clonality	polyclonal
Isotype	Rabbit IgG
Calculated MW	101579
Antigen Region	505-539

SH3PXD2B Antibody (Center) - Additional Information**Gene ID** 285590**Target/Specificity**

This SH3PXD2B antibody is generated from a rabbit immunized with a KLH conjugated synthetic peptide between 505-539 amino acids from the Central region of human SH3PXD2B.

Dilution

WB~~1:2000

E~~Use at an assay dependent concentration.

Format

Purified polyclonal antibody supplied in PBS with 0.09% (W/V) sodium azide. This antibody is purified through a protein A column, followed by peptide affinity purification.

Storage

Maintain refrigerated at 2-8°C for up to 2 weeks. For long term storage store at -20°C in small aliquots to prevent freeze-thaw cycles.

Precautions

SH3PXD2B Antibody (Center) is for research use only and not for use in diagnostic or therapeutic procedures.

SH3PXD2B Antibody (Center) - Protein Information**Name** SH3PXD2B**Synonyms** FAD49, KIAA1295, TKS4

Function Adapter protein involved in invadopodia and podosome formation and extracellular matrix degradation. Binds matrix metalloproteinases (ADAMs), NADPH oxidases (NOXs) and phosphoinositides. Acts as an organizer protein that allows NOX1- or NOX3-dependent reactive

oxygen species (ROS) generation and ROS localization. Plays a role in mitotic clonal expansion during the immediate early stage of adipocyte differentiation (By similarity).

Cellular Location

Cytoplasm. Cell projection, podosome. Note=Cytoplasmic in normal cells and localizes to podosomes in SRC-transformed cells.

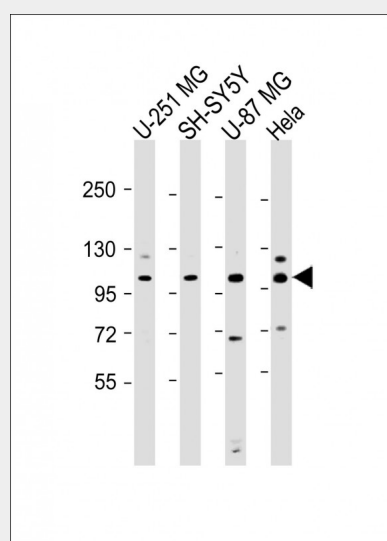
Tissue Location

Expressed in fibroblasts.

SH3PXD2B Antibody (Center) - Protocols

Provided below are standard protocols that you may find useful for product applications.

- [Western Blot](#)
- [Blocking Peptides](#)
- [Dot Blot](#)
- [Immunohistochemistry](#)
- [Immunofluorescence](#)
- [Immunoprecipitation](#)
- [Flow Cytometry](#)
- [Cell Culture](#)

SH3PXD2B Antibody (Center) - Images

All lanes : Anti-SH3PXD2B Antibody (Center) at 1:2000 dilution Lane 1: U-251 MG whole cell lysate Lane 2: SH-SY5Y whole cell lysate Lane 3: U-87 MG whole cell lysate Lane 4: HeLa whole cell lysate Lysates/proteins at 20 µg per lane. Secondary Goat Anti-Rabbit IgG, (H+L), Peroxidase conjugated at 1/10000 dilution. Predicted band size : 102 kDa Blocking/Dilution buffer: 5% NFDM/TBST.