

ADAMTS20 Antibody (Center)
Purified Rabbit Polyclonal Antibody (Pab)
Catalog # AP22215c

Specification

ADAMTS20 Antibody (Center) - Product Information

Application	WB,E
Primary Accession	P59510
Reactivity	Human
Host	Rabbit
Clonality	polyclonal
Isotype	Rabbit IgG
Calculated MW	214721

ADAMTS20 Antibody (Center) - Additional Information

Gene ID 80070

Other Names

A disintegrin and metalloproteinase with thrombospondin motifs 20, ADAM-TS 20, ADAM-TS20, ADAMTS-20, 3.4.24.-, ADAMTS20

Target/Specificity

This ADAMTS20 antibody is generated from a rabbit immunized with a KLH conjugated synthetic peptide between 782-816 amino acids from the Central region of human ADAMTS20.

Dilution

WB~~1:2000

E~~Use at an assay dependent concentration.

Format

Purified polyclonal antibody supplied in PBS with 0.09% (W/V) sodium azide. This antibody is purified through a protein A column, followed by peptide affinity purification.

Storage

Maintain refrigerated at 2-8°C for up to 2 weeks. For long term storage store at -20°C in small aliquots to prevent freeze-thaw cycles.

Precautions

ADAMTS20 Antibody (Center) is for research use only and not for use in diagnostic or therapeutic procedures.

ADAMTS20 Antibody (Center) - Protein Information

Name ADAMTS20

Function May play a role in tissue-remodeling process occurring in both normal and pathological conditions. May have a protease- independent function in the transport from the endoplasmic

reticulum to the Golgi apparatus of secretory cargos, mediated by the GON domain.

Cellular Location

Secreted, extracellular space, extracellular matrix

Tissue Location

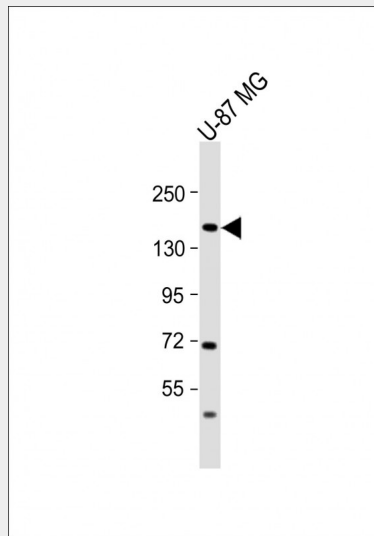
Very sparingly expressed, although is detected at low levels in testis, prostate, ovary, heart, placenta, lung and pancreas. Overexpressed in several brain, colon and breast carcinomas

ADAMTS20 Antibody (Center) - Protocols

Provided below are standard protocols that you may find useful for product applications.

- [Western Blot](#)
- [Blocking Peptides](#)
- [Dot Blot](#)
- [Immunohistochemistry](#)
- [Immunofluorescence](#)
- [Immunoprecipitation](#)
- [Flow Cytometry](#)
- [Cell Culture](#)

ADAMTS20 Antibody (Center) - Images



Anti-ADAMTS20 Antibody (Center) at 1:2000 dilution + U-87 MG whole cell lysate Lysates/proteins at 20 µg per lane. Secondary Goat Anti-Rabbit IgG, (H+L), Peroxidase conjugated at 1/10000 dilution. Predicted band size : 170 kDa Blocking/Dilution buffer: 5% NFD/MTBST.

ADAMTS20 Antibody (Center) - Background

May play a role in tissue-remodeling process occurring in both normal and pathological conditions. May have a protease- independent function in the transport from the endoplasmic reticulum to the Golgi apparatus of secretory cargos, mediated by the GON domain.

ADAMTS20 Antibody (Center) - References

Somerville R.P., et al. J. Biol. Chem. 278:9503-9513(2003).

Llamazares M., et al. J. Biol. Chem. 278:13382-13389(2003).

Scherer S.E., et al. Nature 440:346-351(2006).

Mural R.J., et al. Submitted (JUL-2005) to the EMBL/GenBank/DDBJ databases.