

CD24 Antibody (Center)
Purified Rabbit Polyclonal Antibody (Pab)
Catalog # AP22227c**Specification**

CD24 Antibody (Center) - Product Information

Application	WB,E
Primary Accession	P25063
Other Accession	Q6SW14
Reactivity	Human
Host	Rabbit
Clonality	polyclonal
Isotype	Rabbit IgG
Calculated MW	8083

CD24 Antibody (Center) - Additional Information**Gene ID** 100133941**Other Names**

Signal transducer CD24, Small cell lung carcinoma cluster 4 antigen, CD24, CD24, CD24A

Target/Specificity

This CD24 antibody is generated from a rabbit immunized with a KLH conjugated synthetic peptide between 17-38 amino acids from the Central region of human CD24.

Dilution

WB~~1:1000-1:2000

E~~Use at an assay dependent concentration.

Format

Purified polyclonal antibody supplied in PBS with 0.09% (W/V) sodium azide. This antibody is purified through a protein A column, followed by peptide affinity purification.

Storage

Maintain refrigerated at 2-8°C for up to 2 weeks. For long term storage store at -20°C in small aliquots to prevent freeze-thaw cycles.

Precautions

CD24 Antibody (Center) is for research use only and not for use in diagnostic or therapeutic procedures.

CD24 Antibody (Center) - Protein Information**Name** CD24**Synonyms** CD24A

Function May have a pivotal role in cell differentiation of different cell types. Signaling could be triggered by the binding of a lectin- like ligand to the CD24 carbohydrates, and transduced by the release of second messengers derived from the GPI-anchor. Modulates B-cell activation responses. Promotes AG-dependent proliferation of B-cells, and prevents their terminal differentiation into antibody-forming cells (PubMed:[11313396](#)). In association with SIGLEC10 may be involved in the selective suppression of the immune response to danger-associated molecular patterns (DAMPs) such as HMGB1, HSP70 and HSP90. Plays a role in the control of autoimmunity (By similarity).

Cellular Location

Cell membrane; Lipid-anchor, GPI-anchor.

Tissue Location

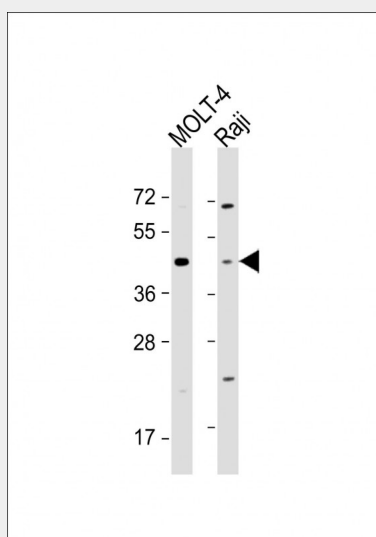
B-cells. Expressed in a number of B-cell lines including P32/ISH and Namalwa. Expressed in erythroleukemia cell and small cell lung carcinoma cell lines. Also expressed on the surface of T-cells.

CD24 Antibody (Center) - Protocols

Provided below are standard protocols that you may find useful for product applications.

- [Western Blot](#)
- [Blocking Peptides](#)
- [Dot Blot](#)
- [Immunohistochemistry](#)
- [Immunofluorescence](#)
- [Immunoprecipitation](#)
- [Flow Cytometry](#)
- [Cell Culture](#)

CD24 Antibody (Center) - Images



All lanes : Anti-CD24 Antibody (Center) at 1:1000-1:2000 dilution Lane 1: MOLT-4 whole cell lysate Lane 2: Raji whole cell lysate Lysates/proteins at 20 µg per lane. Secondary Goat Anti-Rabbit IgG, (H+L), Peroxidase conjugated at 1/10000 dilution. Predicted band size : 8 kDa Blocking/Dilution buffer: 5% NFDM/TBST.

CD24 Antibody (Center) - Background

Modulates B-cell activation responses. Signaling could be triggered by the binding of a lectin-like ligand to the CD24 carbohydrates, and transduced by the release of second messengers derived from the GPI-anchor. Promotes AG-dependent proliferation of B-cells, and prevents their terminal differentiation into antibody-forming cells.

CD24 Antibody (Center) - References

Kay R.,et al.J. Immunol. 147:1412-1416(1991).
Jackson D.,et al.Cancer Res. 52:5264-5270(1992).
Kalnine N.,et al.Submitted (MAY-2003) to the EMBL/GenBank/DDBJ databases.
Hough M.R.,et al.Genomics 22:154-161(1994).
Zarn J.A.,et al.Biochem. Biophys. Res. Commun. 225:384-391(1996).

CD24 Antibody (Center) - Citations

- [LncRNA IL21-AS1 facilitates tumour progression by enhancing CD24-induced phagocytosis inhibition and tumorigenesis in ovarian cancer](#)
- [CBX7 regulates stem cell-like properties of gastric cancer cells via p16 and AKT-NF-κB-miR-21 pathways.](#)