

PLEC Antibody (C-Term)
Purified Rabbit Polyclonal Antibody (Pab)
Catalog # AP22252b

Specification

PLEC Antibody (C-Term) - Product Information

Application	WB, IF,E
Primary Accession	Q15149
Other Accession	Q9JI55 , Q9QXS1 , P30427
Reactivity	Human
Predicted	Hamster, Mouse, Rat
Host	Rabbit
Clonality	polyclonal
Isotype	Rabbit IgG
Calculated MW	531791

PLEC Antibody (C-Term) - Additional Information

Gene ID 5339

Other Names

Plectin, PCN, PLTN, Hemidesmosomal protein 1, HD1, Plectin-1, PLEC, PLEC1

Target/Specificity

This PLEC antibody is generated from a rabbit immunized with a KLH conjugated synthetic peptide between 4241-4275 amino acids from human PLEC.

Dilution

WB~~1:1000

IF~~1:25

E~~Use at an assay dependent concentration.

Format

Purified polyclonal antibody supplied in PBS with 0.09% (W/V) sodium azide. This antibody is purified through a protein A column, followed by peptide affinity purification.

Storage

Maintain refrigerated at 2-8°C for up to 2 weeks. For long term storage store at -20°C in small aliquots to prevent freeze-thaw cycles.

Precautions

PLEC Antibody (C-Term) is for research use only and not for use in diagnostic or therapeutic procedures.

PLEC Antibody (C-Term) - Protein Information

Name PLEC

Synonyms PLEC1

Function Interlinks intermediate filaments with microtubules and microfilaments and anchors intermediate filaments to desmosomes or hemidesmosomes. Could also bind muscle proteins such as actin to membrane complexes in muscle. May be involved not only in the filaments network, but also in the regulation of their dynamics. Structural component of muscle. Isoform 9 plays a major role in the maintenance of myofiber integrity.

Cellular Location

Cytoplasm, cytoskeleton. Cell junction, hemidesmosome. Cell projection, podosome
{ECO:0000250|UniProtKB:Q9QXS1}. Note=Localized to the cortex of myotube podosomes.
{ECO:0000250|UniProtKB:Q9QXS1}

Tissue Location

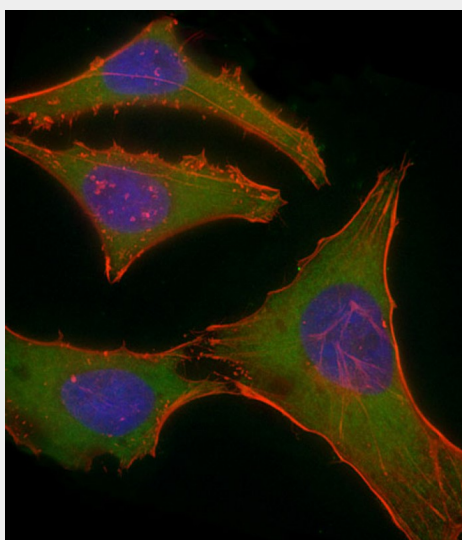
Widely expressed with highest levels in muscle, heart, placenta and spinal cord

PLEC Antibody (C-Term) - Protocols

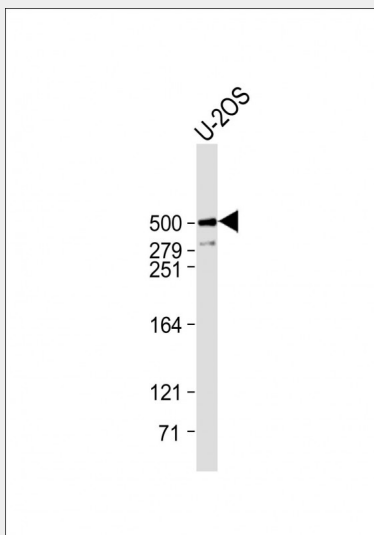
Provided below are standard protocols that you may find useful for product applications.

- [Western Blot](#)
- [Blocking Peptides](#)
- [Dot Blot](#)
- [Immunohistochemistry](#)
- [Immunofluorescence](#)
- [Immunoprecipitation](#)
- [Flow Cytometry](#)
- [Cell Culture](#)

PLEC Antibody (C-Term) - Images



Immunofluorescent analysis of 4% paraformaldehyde-fixed, 0.1% Triton X-100 permeabilized HeLa (human cervical epithelial adenocarcinoma cell line) cells labeling PLEC with AP22252b at 1/25 dilution, followed by Dylight® 488-conjugated goat anti-rabbit IgG (NK179883) secondary antibody at 1/200 dilution (green). Immunofluorescence image showing cytoplasm staining on HeLa cell line. Cytoplasmic actin is detected with Dylight® 554 Phalloidin (PD18466410) at 1/100 dilution (red). The nuclear counter stain is DAPI (blue).



Anti-PLEC Antibody (C-Term) at 1:1000 dilution + U-2OS whole cell lysate Lysates/proteins at 20 μ g per lane. Secondary Goat Anti-Rabbit IgG, (H+L), Peroxidase conjugated at 1/10000 dilution. Predicted band size : 532 kDa Blocking/Dilution buffer: 5% NFDM/TBST.

PLEC Antibody (C-Term) - Background

Interlinks intermediate filaments with microtubules and microfilaments and anchors intermediate filaments to desmosomes or hemidesmosomes. Could also bind muscle proteins such as actin to membrane complexes in muscle. May be involved not only in the filaments network, but also in the regulation of their dynamics. Structural component of muscle. Isoform 9 plays a major role in the maintenance of myofibers integrity.

PLEC Antibody (C-Term) - References

Liu C.-G.,et al.Proc. Natl. Acad. Sci. U.S.A. 93:4278-4283(1996).
McLean W.H.I.,et al.Genes Dev. 10:1724-1735(1996).
Zhang T.,et al.Genome Res. 14:79-89(2004).
Nusbaum C.,et al.Nature 439:331-335(2006).
Bienvenut W.V.,et al.Submitted (DEC-2008) to UniProtKB.