

MIF4GD Antibody (C-Term)
Purified Rabbit Polyclonal Antibody (Pab)
Catalog # AP22255b**Specification**

MIF4GD Antibody (C-Term) - Product Information

Application	WB, IF, FC,E
Primary Accession	A9UHW6
Reactivity	Human, Mouse
Host	Rabbit
Clonality	polyclonal
Isotype	Rabbit IgG
Calculated MW	25423

MIF4GD Antibody (C-Term) - Additional Information**Gene ID** 57409**Target/Specificity**

This MIF4GD antibody is generated from a rabbit immunized with a KLH conjugated synthetic peptide between 137-169 amino acids from human MIF4GD.

Dilution

WB~~1:2000

IF~~1:25

FC~~1:25

E~~Use at an assay dependent concentration.

Format

Purified polyclonal antibody supplied in PBS with 0.09% (W/V) sodium azide. This antibody is purified through a protein A column, followed by peptide affinity purification.

Storage

Maintain refrigerated at 2-8°C for up to 2 weeks. For long term storage store at -20°C in small aliquots to prevent freeze-thaw cycles.

Precautions

MIF4GD Antibody (C-Term) is for research use only and not for use in diagnostic or therapeutic procedures.

MIF4GD Antibody (C-Term) - Protein Information**Name** MIF4GD**Synonyms** SLIP1

Function Functions in replication-dependent translation of histone mRNAs which differ from other eukaryotic mRNAs in that they do not end with a poly-A tail but a stem-loop. May participate in

circularizing those mRNAs specifically enhancing their translation.

Cellular Location

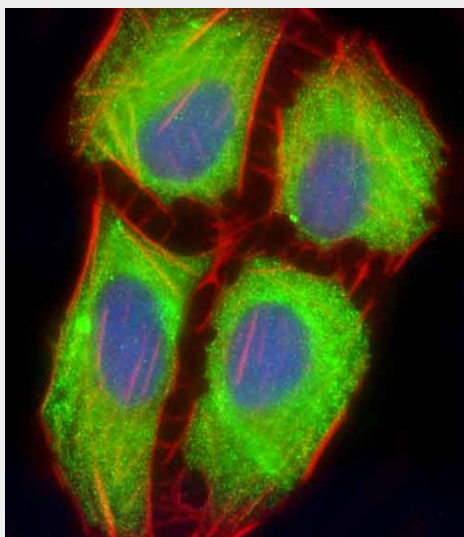
Cytoplasm. Nucleus

MIF4GD Antibody (C-Term) - Protocols

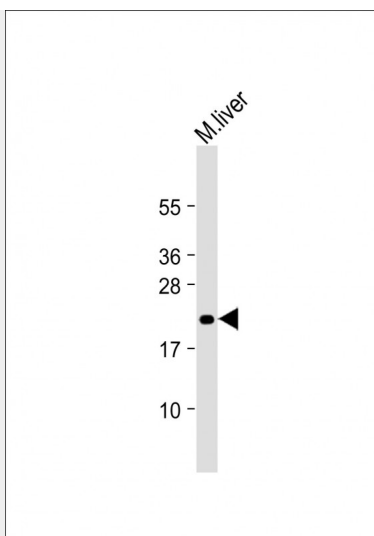
Provided below are standard protocols that you may find useful for product applications.

- [Western Blot](#)
- [Blocking Peptides](#)
- [Dot Blot](#)
- [Immunohistochemistry](#)
- [Immunofluorescence](#)
- [Immunoprecipitation](#)
- [Flow Cytometry](#)
- [Cell Culture](#)

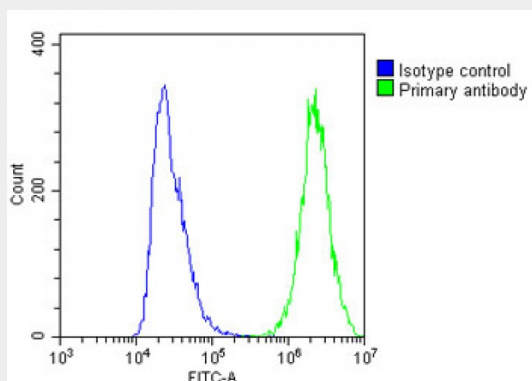
MIF4GD Antibody (C-Term) - Images



Immunofluorescent analysis of 4% paraformaldehyde-fixed, 0.1% Triton X-100 permeabilized U-2 OS (human osteosarcoma cell line) cells labeling MIF4GD with AP22255b at 1/25 dilution, followed by Dylight® 488-conjugated goat anti-rabbit IgG (1583138) secondary antibody at 1/200 dilution (green). Immunofluorescence image showing cytoplasm and weak nucleus staining on U-2 OS cell line. Cytoplasmic actin is detected with Dylight® 554 Phalloidin (PD18466410) at 1/100 dilution (red). The nuclear counter stain is DAPI (blue).



Anti-MIF4GD Antibody (C-Term) at 1:2000 dilution + Mouse liver lysate Lysates/proteins at 20 μ g per lane. Secondary Goat Anti-Rabbit IgG, (H+L), Peroxidase conjugated at 1/10000 dilution. Predicted band size : 25 kDa Blocking/Dilution buffer: 5% NFDM/TBST.



Overlay histogram showing A431 cells stained with AP22255b (green line). The cells were fixed with 2% paraformaldehyde and then permeabilized with 90% methanol for 10 min. The cells were then incubated in 2% bovine serum albumin to block non-specific protein-protein interactions followed by the antibody (1:25 dilution) for 60 min at 37°C. The secondary antibody used was Goat-Anti-Rabbit IgG, DyLight® 488 Conjugated Highly Cross-Adsorbed at 1/200 dilution for 40 min at Room temperature. Isotype control antibody (blue line) was rabbit IgG1 (1 μ g/1 $\times 10^6$ cells) used under the same conditions. Acquisition of >10,000 events was performed.