

SSH3 (Ser37) Antibody
Purified Rabbit Polyclonal Antibody (Pab)
Catalog # AP22265a**Specification**

SSH3 (Ser37) Antibody - Product Information

Application	WB,E
Primary Accession	Q8TE77
Reactivity	Human
Host	Rabbit
Clonality	polyclonal
Isotype	Rabbit IgG
Calculated MW	72996

SSH3 (Ser37) Antibody - Additional Information**Gene ID** 54961**Other Names**

Protein phosphatase Slingshot homolog 3, 3.1.3.16, 3.1.3.48, SSH-like protein 3, SSH-3L, hSSH-3L, SSH3, SSH3L

Target/Specificity

This SSH3 antibody is generated from a rabbit immunized with a KLH conjugated synthetic peptide between 10-43 amino acids from human SSH3.

Dilution

WB~~1:2000

E~~Use at an assay dependent concentration.

Format

Purified polyclonal antibody supplied in PBS with 0.09% (W/V) sodium azide. This antibody is purified through a protein A column, followed by peptide affinity purification.

Storage

Maintain refrigerated at 2-8°C for up to 2 weeks. For long term storage store at -20°C in small aliquots to prevent freeze-thaw cycles.

Precautions

SSH3 (Ser37) Antibody is for research use only and not for use in diagnostic or therapeutic procedures.

SSH3 (Ser37) Antibody - Protein Information**Name** SSH3**Synonyms** SSH3L

Function Protein phosphatase which may play a role in the regulation of actin filament dynamics. Can dephosphorylate and activate the actin binding/depolymerizing factor cofilin, which subsequently binds to actin filaments and stimulates their disassembly (By similarity).

Cellular Location

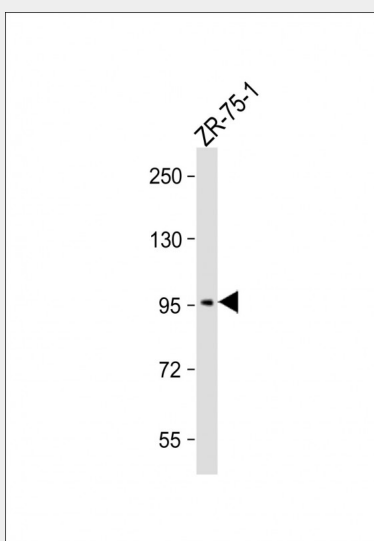
Cytoplasm, cytoskeleton. Nucleus

SSH3 (Ser37) Antibody - Protocols

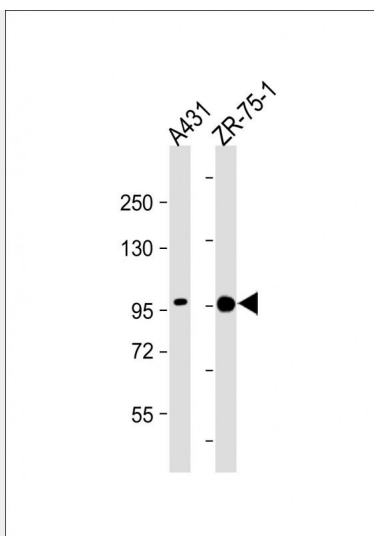
Provided below are standard protocols that you may find useful for product applications.

- [Western Blot](#)
- [Blocking Peptides](#)
- [Dot Blot](#)
- [Immunohistochemistry](#)
- [Immunofluorescence](#)
- [Immunoprecipitation](#)
- [Flow Cytometry](#)
- [Cell Culture](#)

SSH3 (Ser37) Antibody - Images



Anti-SSH3 (Ser37) Antibody at 1:2000 dilution + ZR-75-1 whole cell lysate Lysates/proteins at 20 µg per lane. Secondary Goat Anti-Rabbit IgG, (H+L), Peroxidase conjugated at 1/10000 dilution. Predicted band size : 73 kDa Blocking/Dilution buffer: 5% NFDm/TBST.



All lanes : Anti-Phospho-SSH3 (Ser37) Antibody: Ctrl at 1:2000 dilution Lane 1: A431 whole cell lysate Lane 2: ZR-75-1 whole cell lysate Lysates/proteins at 20 µg per lane. Secondary Goat Anti-Rabbit IgG, (H+L), Peroxidase conjugated at 1/10000 dilution. Predicted band size : 73 kDa Blocking/Dilution buffer: 5% NFDM/TBST.

SSH3 (Ser37) Antibody - Background

Protein phosphatase which may play a role in the regulation of actin filament dynamics. Can dephosphorylate and activate the actin binding/depolymerizing factor cofilin, which subsequently binds to actin filaments and stimulates their disassembly (By similarity).

SSH3 (Ser37) Antibody - References

Niwa R.,et al.Cell 108:233-246(2002).
Ohta Y.,et al.Genes Cells 8:811-824(2003).
Ota T.,et al.Nat. Genet. 36:40-45(2004).
Matsuoka S.,et al.Science 316:1160-1166(2007).
Daub H.,et al.Mol. Cell 31:438-448(2008).