

MYPT1 (Ser507) Antibody
Purified Rabbit Polyclonal Antibody (Pab)
Catalog # AP22267a**Specification**

MYPT1 (Ser507) Antibody - Product Information

Application	WB,E
Primary Accession	O14974
Other Accession	Q9DBR7
Reactivity	Human, Mouse
Predicted	Mouse
Host	Rabbit
Clonality	polyclonal
Isotype	Rabbit IgG
Calculated MW	115281

MYPT1 (Ser507) Antibody - Additional Information**Gene ID** 4659**Other Names**

Protein phosphatase 1 regulatory subunit 12A, Myosin phosphatase-targeting subunit 1, Myosin phosphatase target subunit 1, Protein phosphatase myosin-binding subunit, PPP1R12A, MBS, MYPT1

Target/Specificity

This MYPT1 (Ser507) antibody is generated from a rabbit immunized with a KLH conjugated synthetic peptide between 481-514 amino acids from the human MYPT1.

Dilution

WB~~1:4000

E~~Use at an assay dependent concentration.

Format

Purified polyclonal antibody supplied in PBS with 0.09% (W/V) sodium azide. This antibody is purified through a protein A column, followed by peptide affinity purification.

Storage

Maintain refrigerated at 2-8°C for up to 2 weeks. For long term storage store at -20°C in small aliquots to prevent freeze-thaw cycles.

Precautions

MYPT1 (Ser507) Antibody is for research use only and not for use in diagnostic or therapeutic procedures.

MYPT1 (Ser507) Antibody - Protein Information**Name** PPP1R12A ([HGNC:7618](#))

Function Key regulator of protein phosphatase 1C (PPP1C). Mediates binding to myosin. As part of the PPP1C complex, involved in dephosphorylation of PLK1. Capable of inhibiting HIF1AN-dependent suppression of HIF1A activity.

Cellular Location

Cytoplasm. Cytoplasm, cytoskeleton, stress fiber. Note=Also along actomyosin filaments

Tissue Location

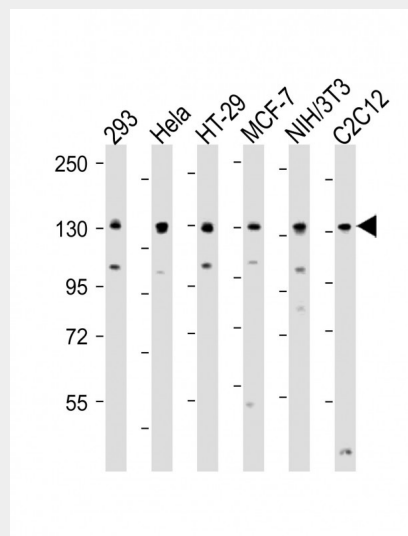
Expressed in striated muscles, specifically in type 2a fibers (at protein level).

MYPT1 (Ser507) Antibody - Protocols

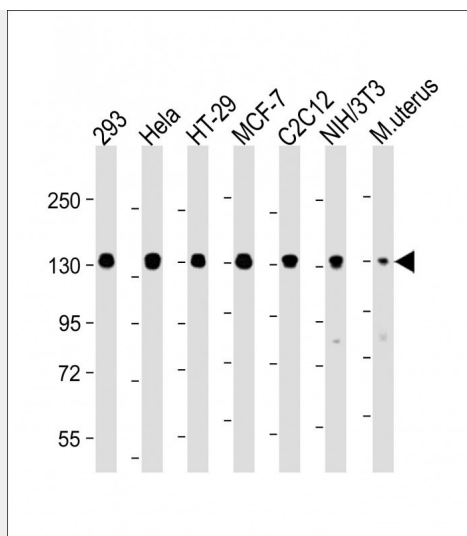
Provided below are standard protocols that you may find useful for product applications.

- [Western Blot](#)
- [Blocking Peptides](#)
- [Dot Blot](#)
- [Immunohistochemistry](#)
- [Immunofluorescence](#)
- [Immunoprecipitation](#)
- [Flow Cytometry](#)
- [Cell Culture](#)

MYPT1 (Ser507) Antibody - Images



All lanes : Anti-MYPT1 (Ser507) Antibody at 1:4000 dilution Lane 1: 293 whole cell lysate Lane 2: HeLa whole cell lysate Lane 3: HT-29 whole cell lysate Lane 4: MCF-7 whole cell lysate Lane 5: NIH/3T3 whole cell lysate Lane 6: C2C12 whole cell lysate Lysates/proteins at 20 µg per lane. Secondary Goat Anti-Rabbit IgG, (H+L), Peroxidase conjugated at 1/10000 dilution. Predicted band size : 115 kDa Blocking/Dilution buffer: 5% NFDM/TBST.



All lanes : Anti-Phospho-MYPT1 (Ser507) Antibody: Ctrl at 1:4000 dilution Lane 1: 293 whole cell lysate Lane 2: Hela whole cell lysate Lane 3: HT-29 whole cell lysate Lane 4: MCF-7 whole cell lysate Lane 5: C2C12 whole cell lysate Lane 6: NIH/3T3 whole cell lysate Lane 7: Mouse uterus lysate Lysates/proteins at 20 μ g per lane. Secondary Goat Anti-Rabbit IgG, (H+L), Peroxidase conjugated at 1/10000 dilution. Predicted band size : 115 kDa Blocking/Dilution buffer: 5% NFDM/TBST.

MYPT1 (Ser507) Antibody - Background

Key regulator of protein phosphatase 1C (PPP1C). Mediates binding to myosin. As part of the PPP1C complex, involved in dephosphorylation of PLK1. Capable of inhibiting HIF1AN- dependent suppression of HIF1A activity.

MYPT1 (Ser507) Antibody - References

Takahashi N.,et al.Genomics 44:150-152(1997).
Guo J.H.,et al.Submitted (DEC-2001) to the EMBL/GenBank/DDBJ databases.
Xia D.,et al.Submitted (SEP-2003) to the EMBL/GenBank/DDBJ databases.
Ota T.,et al.Nat. Genet. 36:40-45(2004).
Scherer S.E.,et al.Nature 440:346-351(2006).