

DLL4 Antibody (C-Term)
Purified Rabbit Polyclonal Antibody (Pab)
Catalog # AP22277b**Specification**

DLL4 Antibody (C-Term) - Product Information

Application	WB,E
Primary Accession	Q9NR61
Reactivity	Human, Mouse, Rat
Host	Rabbit
Clonality	polyclonal
Isotype	Rabbit IgG
Calculated MW	74605
Antigen Region	608-641

DLL4 Antibody (C-Term) - Additional Information**Gene ID** 54567**Other Names**

Delta-like protein 4, Drosophila Delta homolog 4, Delta4, DLL4

Target/Specificity

This DLL4 antibody is generated from a rabbit immunized with a KLH conjugated synthetic peptide between 608-641 amino acids from human DLL4.

Dilution

WB~~1:1000-1:2000

E~~Use at an assay dependent concentration.

Format

Purified polyclonal antibody supplied in PBS with 0.09% (W/V) sodium azide. This antibody is purified through a protein A column, followed by peptide affinity purification.

Storage

Maintain refrigerated at 2-8°C for up to 2 weeks. For long term storage store at -20°C in small aliquots to prevent freeze-thaw cycles.

Precautions

DLL4 Antibody (C-Term) is for research use only and not for use in diagnostic or therapeutic procedures.

DLL4 Antibody (C-Term) - Protein Information**Name** DLL4**Function** Involved in the Notch signaling pathway as Notch ligand (PubMed:[11134954](#)). Activates NOTCH1 and NOTCH4. Involved in angiogenesis; negatively regulates endothelial cell proliferation

and migration and angiogenic sprouting (PubMed:[20616313](#)). Essential for retinal progenitor proliferation. Required for suppressing rod fates in late retinal progenitors as well as for proper generation of other retinal cell types (By similarity). During spinal cord neurogenesis, inhibits V2a interneuron fate (PubMed:[17728344](#)).

Cellular Location

Cell membrane; Single-pass type I membrane protein

Tissue Location

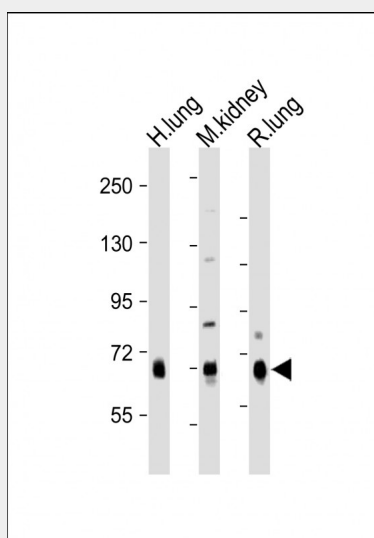
Expressed in vascular endothelium.

DLL4 Antibody (C-Term) - Protocols

Provided below are standard protocols that you may find useful for product applications.

- [Western Blot](#)
- [Blocking Peptides](#)
- [Dot Blot](#)
- [Immunohistochemistry](#)
- [Immunofluorescence](#)
- [Immunoprecipitation](#)
- [Flow Cytometry](#)
- [Cell Culture](#)

DLL4 Antibody (C-Term) - Images



All lanes : Anti-DLL4 Antibody (C-Term) at 1:1000-1:2000 dilution Lane 1: Human lung lysate Lane 2: Mouse kidney lysate Lane 3: Rat lung lysate Lysates/proteins at 20 µg per lane. Secondary Goat Anti-Rabbit IgG, (H+L), Peroxidase conjugated at 1/10000 dilution. Predicted band size : 75 kDa Blocking/Dilution buffer: 5% NFDM/TBST.

DLL4 Antibody (C-Term) - Background

Involved in the Notch signaling pathway as Notch ligand. Activates NOTCH1 and NOTCH4. Involved in angiogenesis; negatively regulates endothelial cell proliferation and migration and angiogenic sprouting. Essential for retinal progenitor proliferation is required for suppressing rod fates in late retinal progenitors as well as for proper generation of other retinal cell types. During spinal cord

neurogenesis, inhibits V2a interneuron fate.

DLL4 Antibody (C-Term) - References

Shutter J.R.,et al.Genes Dev. 14:1313-1318(2000).
Sakano S.,et al.Submitted (JAN-2000) to the EMBL/GenBank/DDBJ databases.
Yoneya T.,et al.J. Biochem. 129:27-34(2001).
Clark H.F.,et al.Genome Res. 13:2265-2270(2003).
Zhang Z.,et al.Protein Sci. 13:2819-2824(2004).