

DLX1 Antibody (Center)
Purified Rabbit Polyclonal Antibody (Pab)
Catalog # AP22281c**Specification**

DLX1 Antibody (Center) - Product Information

Application	WB, FC,E
Primary Accession	P56177
Other Accession	Q64317
Reactivity	Human, Mouse
Predicted	Mouse
Host	Rabbit
Clonality	polyclonal
Isotype	Rabbit IgG
Calculated MW	27320

DLX1 Antibody (Center) - Additional Information**Gene ID** 1745**Other Names**

Homeobox protein DLX-1, DLX1

Target/Specificity

This DLX1 antibody is generated from a rabbit immunized with a KLH conjugated synthetic peptide between 84-118 amino acids from the Central region of human DLX1.

Dilution

WB~~1:2000

FC~~1:25

E~~Use at an assay dependent concentration.

Format

Purified polyclonal antibody supplied in PBS with 0.09% (W/V) sodium azide. This antibody is purified through a protein A column, followed by peptide affinity purification.

Storage

Maintain refrigerated at 2-8°C for up to 2 weeks. For long term storage store at -20°C in small aliquots to prevent freeze-thaw cycles.

Precautions

DLX1 Antibody (Center) is for research use only and not for use in diagnostic or therapeutic procedures.

DLX1 Antibody (Center) - Protein Information**Name** DLX1

Function Plays a role as a transcriptional activator or repressor (PubMed:[14671321](#)). Inhibits several cytokine signaling pathways, such as TGF β 1, activin-A/INHBA and BMP4 by interfering with the transcriptional stimulatory activity of transcription factors, such as MSX2, FAST2, SMAD2 and SMAD3 during hematopoietic cell differentiation (PubMed:[14671321](#)). Plays a role in terminal differentiation of interneurons, such as amacrine and bipolar cells in the developing retina (By similarity). Likely to play a regulatory role in the development of the ventral forebrain (By similarity). May play a role in craniofacial patterning and morphogenesis and may be involved in the early development of diencephalic subdivisions (By similarity).

Cellular Location

Nucleus.

Tissue Location

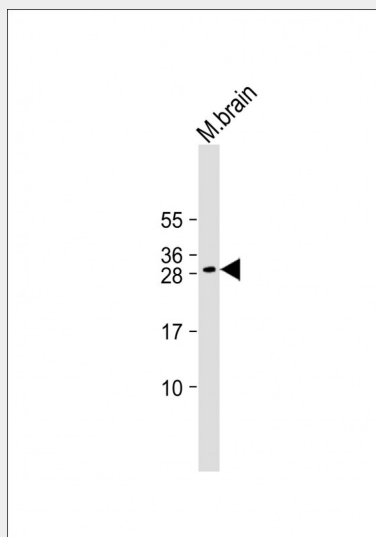
Expressed in hematopoietic cell lines.

DLX1 Antibody (Center) - Protocols

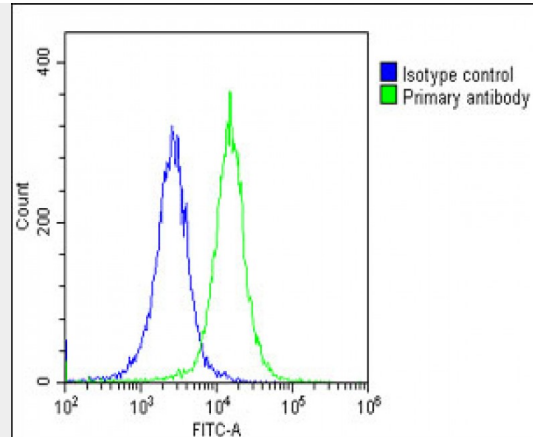
Provided below are standard protocols that you may find useful for product applications.

- [Western Blot](#)
- [Blocking Peptides](#)
- [Dot Blot](#)
- [Immunohistochemistry](#)
- [Immunofluorescence](#)
- [Immunoprecipitation](#)
- [Flow Cytometry](#)
- [Cell Culture](#)

DLX1 Antibody (Center) - Images



Anti-DLX1 Antibody (Center) at 1:2000 dilution + Mouse brain lysate Lysates/proteins at 20 μ g per lane. Secondary Goat Anti-Rabbit IgG, (H+L), Peroxidase conjugated at 1/10000 dilution. Predicted band size : 27 kDa Blocking/Dilution buffer: 5% NFDM/TBST.



Overlay histogram showing HeLa cells stained with AP22281c(green line). The cells were fixed with 2% paraformaldehyde (10 min) and then permeabilized with 90% methanol for 10 min. The cells were then incubated in 2% bovine serum albumin to block non-specific protein-protein interactions followed by the antibody (AP22281c, 1:25 dilution) for 60 min at 37°C. The secondary antibody used was Goat-Anti-Rabbit IgG, DyLight® 488 Conjugated Highly Cross-Adsorbed(OE188374) at 1/200 dilution for 40 min at 37°C. Isotype control antibody (blue line) was rabbit IgG1 (1µg/1x10⁶ cells) used under the same conditions. Acquisition of >10, 000 events was performed.

DLX1 Antibody (Center) - Background

Likely to play a regulatory role in the development of the ventral forebrain. May play a role in craniofacial patterning and morphogenesis and may be involved in the early development of diencephalic subdivisions (By similarity).

DLX1 Antibody (Center) - References

Chiba S.,et al.Proc. Natl. Acad. Sci. U.S.A. 100:15577-15582(2003).
Hillier L.W.,et al.Nature 434:724-731(2005).
Mural R.J.,et al.Submitted (SEP-2005) to the EMBL/GenBank/DDBJ databases.
Simeone A.,et al.Proc. Natl. Acad. Sci. U.S.A. 91:2250-2254(1994).