

RGMB Antibody
Purified Rabbit Polyclonal Antibody (Pab)
Catalog # AP22293a**Specification**

RGMB Antibody - Product Information

Application	WB, IHC-P-Leica,E
Primary Accession	Q6NW40
Reactivity	Human, Mouse
Host	Rabbit
Clonality	polyclonal
Isotype	Rabbit IgG
Calculated MW	47547

RGMB Antibody - Additional Information**Gene ID** 285704**Other Names**

RGM domain family member B, DRG11-responsive axonal guidance and outgrowth of neurite, DRAGON, RGMB

Target/Specificity

This RGMB antibody is generated from a rabbit immunized with a recombinant protein of human RGMB.

DilutionWB~~1:2000
IHC-P-Leica~~1:500
E~~Use at an assay dependent concentration.**Format**

Purified polyclonal antibody supplied in PBS with 0.09% (W/V) sodium azide. This antibody is purified through a protein A column, followed by peptide affinity purification.

Storage

Maintain refrigerated at 2-8°C for up to 2 weeks. For long term storage store at -20°C in small aliquots to prevent freeze-thaw cycles.

Precautions

RGMB Antibody is for research use only and not for use in diagnostic or therapeutic procedures.

RGMB Antibody - Protein Information**Name** RGMB {ECO:0000303|PubMed:19324014, ECO:0000312|HGNC:HGNC:26896}**Function** Member of the repulsive guidance molecule (RGM) family that contributes to the patterning of the developing nervous system (By similarity). Acts as a bone morphogenetic protein

(BMP) coreceptor that potentiates BMP signaling (By similarity). Promotes neuronal adhesion (By similarity). May inhibit neurite outgrowth.

Cellular Location

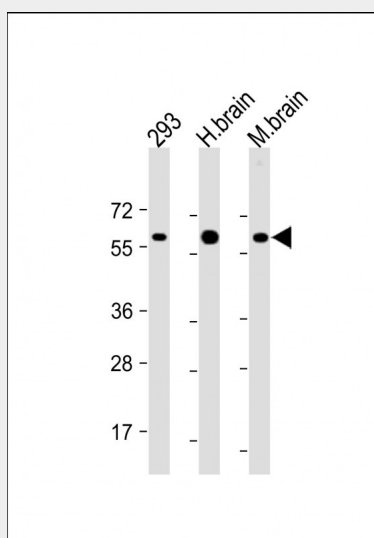
Cell membrane {ECO:0000250|UniProtKB:Q7TQ33}; Lipid-anchor, GPI-anchor {ECO:0000250|UniProtKB:Q7TQ33}. Membrane raft {ECO:0000250|UniProtKB:Q7TQ33}

RGMB Antibody - Protocols

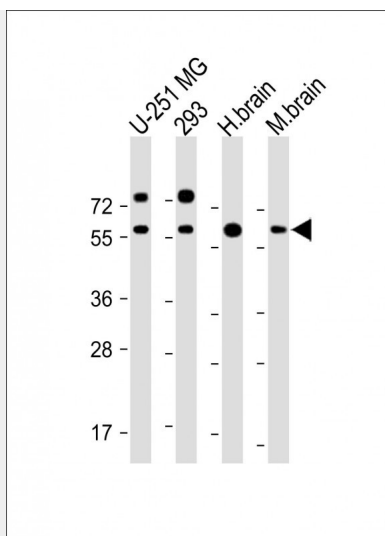
Provided below are standard protocols that you may find useful for product applications.

- [Western Blot](#)
- [Blocking Peptides](#)
- [Dot Blot](#)
- [Immunohistochemistry](#)
- [Immunofluorescence](#)
- [Immunoprecipitation](#)
- [Flow Cytometry](#)
- [Cell Culture](#)

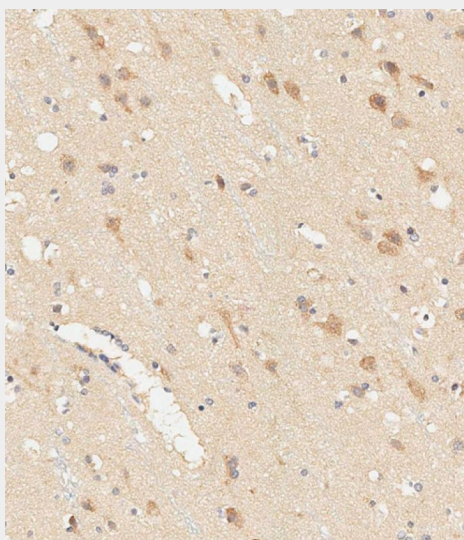
RGMB Antibody - Images



All lanes : Anti-RGMB Antibody at 1:2000 dilution Lane 1: 293 whole cell lysate Lane 2: Human brain lysate Lane 3: Mouse brain lysate Lysates/proteins at 20 µg per lane. Secondary Goat Anti-Rabbit IgG, (H+L), Peroxidase conjugated at 1/10000 dilution. Predicted band size : 48 kDa Blocking/Dilution buffer: 5% NFDm/TBST.



All lanes : Anti-RGMB Antibody at 1:2000 dilution Lane 1: U-251 MG whole cell lysate Lane 2: 293 whole cell lysate Lane 3: Human brain lysate Lane 4: Mouse brain lysate Lysates/proteins at 20 µg per lane. Secondary Goat Anti-Rabbit IgG, (H+L), Peroxidase conjugated at 1/10000 dilution. Predicted band size : 48 kDa Blocking/Dilution buffer: 5% NFDM/TBST.



Immunohistochemical analysis of paraffin-embedded human brain tissue using AP22293a performed on the Leica® BOND RXm. Samples were incubated with primary antibody(1/500) for 1 hours at room temperature. A undiluted biotinylated CRF Anti-Polyvalent HRP Polymer antibody was used as the secondary antibody.

RGMB Antibody - Background

Member of the repulsive guidance molecule (RGM) family that contributes to the patterning of the developing nervous system (By similarity). Acts as a bone morphogenetic protein (BMP) coreceptor that potentiates BMP signaling (By similarity). Promotes neuronal adhesion (By similarity). May inhibit neurite outgrowth.

RGMB Antibody - References

Ota T.,et al.Nat. Genet. 36:40-45(2004).
Schmutz J.,et al.Nature 431:268-274(2004).
Liu X.,et al.Biochem. Biophys. Res. Commun. 382:795-800(2009).

Bell C.H.,et al.Science 341:77-80(2013).