

**CKS2 Antibody (C-Term)**  
**Purified Rabbit Polyclonal Antibody (Pab)**  
**Catalog # AP22302b****Specification**

---

**CKS2 Antibody (C-Term) - Product Information**

Application	WB, FC, IF, E
Primary Accession	<a href="#">P33552</a>
Other Accession	<a href="#">Q2KJ11</a> , <a href="#">Q91879</a>
Reactivity	Human
Predicted	Bovine, Xenopus
Host	Rabbit
Clonality	polyclonal
Isotype	Rabbit IgG
Calculated MW	9860

**CKS2 Antibody (C-Term) - Additional Information****Gene ID** 1164**Other Names**

Cyclin-dependent kinases regulatory subunit 2, CKS-2, CKS2

**Target/Specificity**

This CKS2 antibody is generated from a rabbit immunized with a KLH conjugated synthetic peptide between 43-77 amino acids from the human region of human CKS2.

**Dilution**

WB~~1:2000

FC~~1:25

IF~~1:25

E~~Use at an assay dependent concentration.

**Format**

Purified polyclonal antibody supplied in PBS with 0.09% (W/V) sodium azide. This antibody is purified through a protein A column, followed by peptide affinity purification.

**Storage**

Maintain refrigerated at 2-8°C for up to 2 weeks. For long term storage store at -20°C in small aliquots to prevent freeze-thaw cycles.

**Precautions**

CKS2 Antibody (C-Term) is for research use only and not for use in diagnostic or therapeutic procedures.

**CKS2 Antibody (C-Term) - Protein Information****Name** CKS2

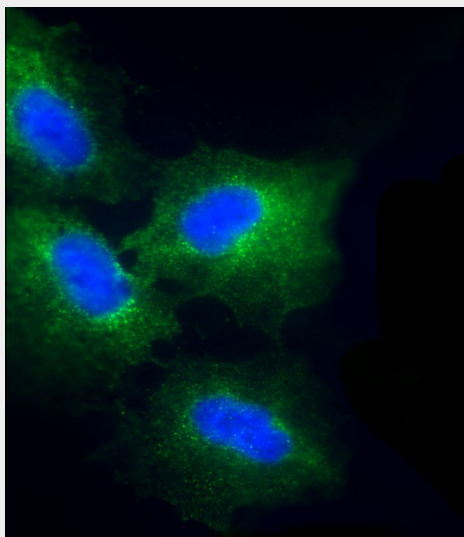
**Function** Binds to the catalytic subunit of the cyclin dependent kinases and is essential for their biological function.

### CKS2 Antibody (C-Term) - Protocols

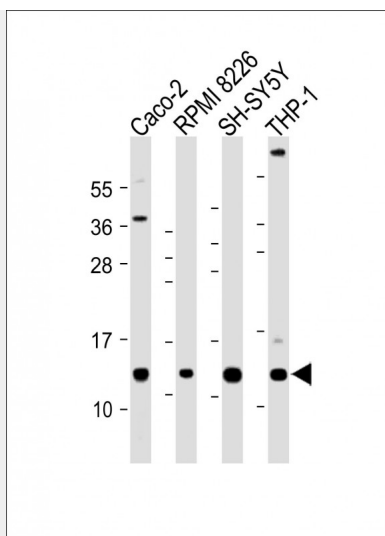
Provided below are standard protocols that you may find useful for product applications.

- [Western Blot](#)
- [Blocking Peptides](#)
- [Dot Blot](#)
- [Immunohistochemistry](#)
- [Immunofluorescence](#)
- [Immunoprecipitation](#)
- [Flow Cytometry](#)
- [Cell Culture](#)

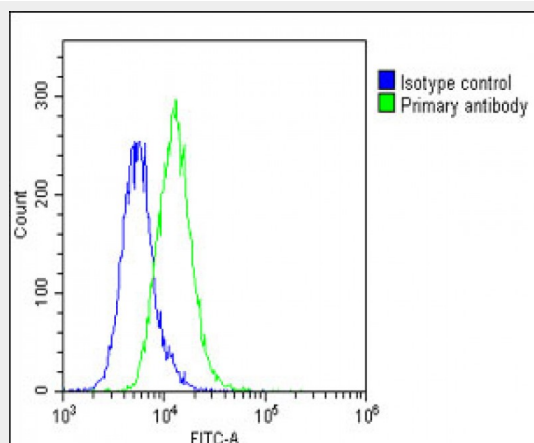
### CKS2 Antibody (C-Term) - Images



Immunofluorescent analysis of 4% paraformaldehyde-fixed, 0.1% Triton X-100 permeabilized A549 cells labeling CKS2 with AP22302b at 1/25 dilution, followed by Dylight® 488-conjugated goat anti-Rabbit IgG (OH191631) secondary antibody at 1/200 dilution (green). Immunofluorescence image showing cytoplasm staining on A549 cell line. Cytoplasmic actin is detected with Dylight® 554 Phalloidin (1186255) at 1/500 dilution (red). The nuclear counter stain is DAPI (blue).



All lanes : Anti-CKS2 Antibody (C-Term) at 1:2000 dilution Lane 1: Caco-2 whole cell lysate Lane 2: RPMI 8226 whole cell lysate Lane 3: SH-SY5Y whole cell lysate Lane 4: THP-1 whole cell lysate Lysates/proteins at 20 µg per lane. Secondary Goat Anti-Rabbit IgG, (H+L), Peroxidase conjugated at 1/10000 dilution. Predicted band size : 10 kDa Blocking/Dilution buffer: 5% NFDM/TBST.



Overlay histogram showing A549 cells stained with AP22302b(green line). The cells were fixed with 2% paraformaldehyde (10 min) and then permeabilized with 90% methanol for 10 min. The cells were then incubated in 2% bovine serum albumin to block non-specific protein-protein interactions followed by the antibody (AP22302b, 1:25 dilution) for 60 min at 37°C. The secondary antibody used was Goat-Anti-Rabbit IgG, DyLight® 488 Conjugated Highly Cross-Adsorbed(1583138) at 1/200 dilution for 40 min at 37°C. Isotype control antibody (blue line) was rabbit IgG1 (1µg/1x10<sup>6</sup> cells) used under the same conditions. Acquisition of >10, 000 events was performed.

### CKS2 Antibody (C-Term) - Background

Binds to the catalytic subunit of the cyclin dependent kinases and is essential for their biological function.

### CKS2 Antibody (C-Term) - References

Richardson H.E.,et al.Genes Dev. 4:1332-1344(1990).  
Kalnine N.,et al.Submitted (MAY-2003) to the EMBL/GenBank/DDBJ databases.  
Ebert L.,et al.Submitted (JUN-2004) to the EMBL/GenBank/DDBJ databases.  
Humphray S.J.,et al.Nature 429:369-374(2004).

Mural R.J.,et al.Submitted (JUL-2005) to the EMBL/GenBank/DDBJ databases.