

CKS2 Antibody (N-Term)
Purified Rabbit Polyclonal Antibody (Pab)
Catalog # AP22318a**Specification**

CKS2 Antibody (N-Term) - Product Information

Application	WB, FC,E
Primary Accession	P33552
Other Accession	Q2KJ11 , P56390
Reactivity	Human
Predicted	Bovine, Mouse
Host	Rabbit
Clonality	polyclonal
Isotype	Rabbit IgG
Calculated MW	9860

CKS2 Antibody (N-Term) - Additional Information**Gene ID** 1164**Other Names**

Cyclin-dependent kinases regulatory subunit 2, CKS-2, CKS2

Target/Specificity

This CKS2 antibody is generated from a rabbit immunized with a KLH conjugated synthetic peptide between 6-40 amino acids from the human region of human CKS2.

Dilution

WB~~1:2000

FC~~1:25

Format

Purified polyclonal antibody supplied in PBS with 0.09% (W/V) sodium azide. This antibody is purified through a protein A column, followed by peptide affinity purification.

Storage

Maintain refrigerated at 2-8°C for up to 2 weeks. For long term storage store at -20°C in small aliquots to prevent freeze-thaw cycles.

Precautions

CKS2 Antibody (N-Term) is for research use only and not for use in diagnostic or therapeutic procedures.

CKS2 Antibody (N-Term) - Protein Information**Name** CKS2**Function** Binds to the catalytic subunit of the cyclin dependent kinases and is essential for their

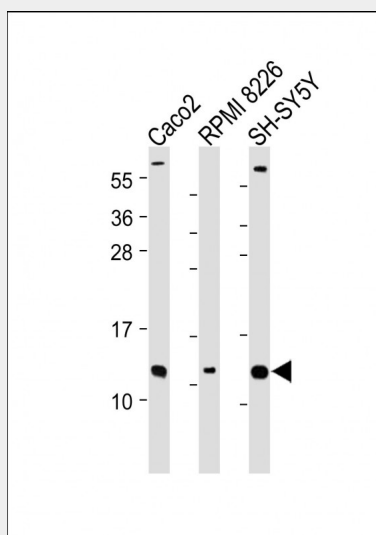
biological function.

CKS2 Antibody (N-Term) - Protocols

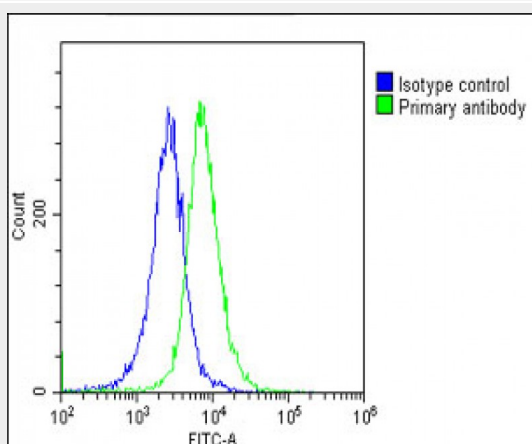
Provided below are standard protocols that you may find useful for product applications.

- [Western Blot](#)
- [Blocking Peptides](#)
- [Dot Blot](#)
- [Immunohistochemistry](#)
- [Immunofluorescence](#)
- [Immunoprecipitation](#)
- [Flow Cytometry](#)
- [Cell Culture](#)

CKS2 Antibody (N-Term) - Images



All lanes : Anti-CKS2 Antibody (N-Term) at 1:2000 dilution Lane 1: Caco2 whole cell lysate Lane 2: RPMI 8226 whole cell lysate Lane 3: SH-SY5Y whole cell lysate Lysates/proteins at 20 µg per lane. Secondary Goat Anti-Rabbit IgG, (H+L), Peroxidase conjugated at 1/10000 dilution. Predicted band size : 10 kDa Blocking/Dilution buffer: 5% NFDN/TBST.



Overlay histogram showing HeLa cells stained with AP22318a(green line). The cells were fixed

with 2% paraformaldehyde (10 min) and then permeabilized with 90% methanol for 10 min. The cells were then incubated in 2% bovine serum albumin to block non-specific protein-protein interactions followed by the antibody (AP22318a, 1:25 dilution) for 60 min at 37°C. The secondary antibody used was Goat-Anti-Rabbit IgG, DyLight® 488 Conjugated Highly Cross-Adsorbed(OE188374) at 1/200 dilution for 40 min at 37°C. Isotype control antibody (blue line) was rabbit IgG1 (1µg/1x10⁶ cells) used under the same conditions. Acquisition of >10, 000 events was performed.

CKS2 Antibody (N-Term) - Background

Binds to the catalytic subunit of the cyclin dependent kinases and is essential for their biological function.

CKS2 Antibody (N-Term) - References

Richardson H.E.,et al.Genes Dev. 4:1332-1344(1990).
Kalnina N.,et al.Submitted (MAY-2003) to the EMBL/GenBank/DDBJ databases.
Ebert L.,et al.Submitted (JUN-2004) to the EMBL/GenBank/DDBJ databases.
Humphray S.J.,et al.Nature 429:369-374(2004).
Mural R.J.,et al.Submitted (JUL-2005) to the EMBL/GenBank/DDBJ databases.