

**F13A1 Antibody (N-Term)**  
**Purified Rabbit Polyclonal Antibody (Pab)**  
**Catalog # AP22334a****Specification**

---

**F13A1 Antibody (N-Term) - Product Information**

Application	IF, WB, FC,E
Primary Accession	<a href="#">P00488</a>
Reactivity	Human
Host	Rabbit
Clonality	polyclonal
Isotype	Rabbit IgG
Calculated MW	83268

**F13A1 Antibody (N-Term) - Additional Information****Gene ID** 2162**Other Names**

Coagulation factor XIII A chain, Coagulation factor XIIIa, 2.3.2.13, Protein-glutamine gamma-glutamyltransferase A chain, Transglutaminase A chain, F13A1, F13A

**Target/Specificity**

This F13A1 antibody is generated from a rabbit immunized with a KLH conjugated synthetic peptide between 170-204 amino acids from the human region of human F13A1.

**Dilution**

IF~~1:25  
WB~~1:2000  
FC~~1:25

**Format**

Purified polyclonal antibody supplied in PBS with 0.09% (W/V) sodium azide. This antibody is purified through a protein A column, followed by peptide affinity purification.

**Storage**

Maintain refrigerated at 2-8°C for up to 2 weeks. For long term storage store at -20°C in small aliquots to prevent freeze-thaw cycles.

**Precautions**

F13A1 Antibody (N-Term) is for research use only and not for use in diagnostic or therapeutic procedures.

**F13A1 Antibody (N-Term) - Protein Information****Name** F13A1**Synonyms** F13A

**Function** Factor XIII is activated by thrombin and calcium ion to a transglutaminase that catalyzes the formation of gamma-glutamyl- epsilon-lysine cross-links between fibrin chains, thus stabilizing the fibrin clot. Also cross-link alpha-2-plasmin inhibitor, or fibronectin, to the alpha chains of fibrin.

**Cellular Location**

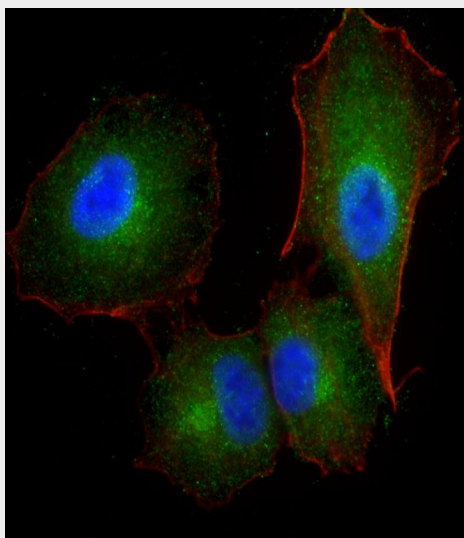
Cytoplasm. Secreted. Note=Secreted into the blood plasma. Cytoplasmic in most tissues, but also secreted in the blood plasma

**F13A1 Antibody (N-Term) - Protocols**

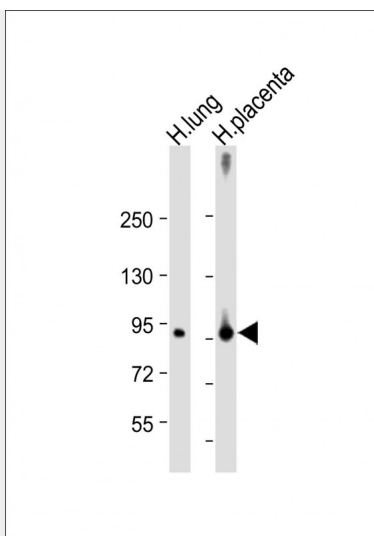
Provided below are standard protocols that you may find useful for product applications.

- [Western Blot](#)
- [Blocking Peptides](#)
- [Dot Blot](#)
- [Immunohistochemistry](#)
- [Immunofluorescence](#)
- [Immunoprecipitation](#)
- [Flow Cytometry](#)
- [Cell Culture](#)

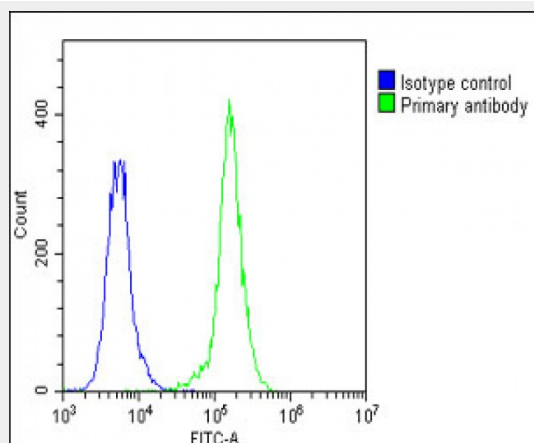
**F13A1 Antibody (N-Term) - Images**



Immunofluorescent analysis of 4% paraformaldehyde-fixed, 0.1% Triton X-100 permeabilized A549 cells labeling F13A1 with AP22334a at 1/25 dilution, followed by Dylight® 488-conjugated goat anti-Rabbit IgG (OH191631) secondary antibody at 1/200 dilution (green). Immunofluorescence image showing cytoplasm staining on A549 cell line. Cytoplasmic actin is detected with Dylight® 554 Phalloidin (1186255) at 1/500 dilution (red). The nuclear counter stain is DAPI (blue).



All lanes : Anti-F13A1 Antibody (N-Term) at 1:2000 dilution Lane 1: Human lung lysate Lane 2: Human placenta lysate Lysates/proteins at 20 µg per lane. Secondary Goat Anti-Rabbit IgG, (H+L), Peroxidase conjugated at 1/10000 dilution. Predicted band size : 83 kDa Blocking/Dilution buffer: 5% NFDm/TBST.



Overlay histogram showing A549 cells stained with AP22334a(green line). The cells were fixed with 2% paraformaldehyde (10 min) and then permeabilized with 90% methanol for 10 min. The cells were then incubated in 2% bovine serum albumin to block non-specific protein-protein interactions followed by the antibody (AP22334a, 1:25 dilution) for 60 min at 37°C. The secondary antibody used was Goat-Anti-Rabbit IgG, DyLight® 488 Conjugated Highly Cross-Adsorbed(1583138) at 1/200 dilution for 40 min at 37°C. Isotype control antibody (blue line) was rabbit IgG1 (1µg/1x10<sup>6</sup> cells) used under the same conditions. Acquisition of >10, 000 events was performed.

### F13A1 Antibody (N-Term) - Background

Factor XIII is activated by thrombin and calcium ion to a transglutaminase that catalyzes the formation of gamma-glutamyl- epsilon-lysine cross-links between fibrin chains, thus stabilizing the fibrin clot. Also cross-link alpha-2-plasmin inhibitor, or fibronectin, to the alpha chains of fibrin.

### F13A1 Antibody (N-Term) - References

Ichinose A.,et al.Biochemistry 25:6900-6906(1986).  
Grundmann U.,et al.Proc. Natl. Acad. Sci. U.S.A. 83:8024-8028(1986).  
Ichinose A.,et al.Proc. Natl. Acad. Sci. U.S.A. 85:5829-5833(1988).

Totoki Y.,et al.Submitted (MAR-2005) to the EMBL/GenBank/DDBJ databases.  
Mungall A.J.,et al.Nature 425:805-811(2003).