

gamma Tubulin Antibody
Purified Rabbit Polyclonal Antibody (Pab)
Catalog # AP22339a**Specification**

gamma Tubulin Antibody - Product Information

Application	WB, FC,E
Primary Accession	Q8VCK3
Reactivity	Mouse
Host	Rabbit
Clonality	polyclonal
Isotype	Rabbit IgG
Calculated MW	51122

gamma Tubulin Antibody - Additional Information**Gene ID** 103768**Other Names**

Tubulin gamma-2 chain, Gamma-2-tubulin, Tubg2

Target/Specificity

This gamma Tubulin antibody is generated from a rabbit immunized with a KLH conjugated synthetic peptide between 400-434 amino acids from the mouse region of mouse gamma Tubulin.

Dilution

WB~~1:2000

FC~~1:25

E~~Use at an assay dependent concentration.

Format

Purified polyclonal antibody supplied in PBS with 0.09% (W/V) sodium azide. This antibody is purified through a protein A column, followed by peptide affinity purification.

Storage

Maintain refrigerated at 2-8°C for up to 2 weeks. For long term storage store at -20°C in small aliquots to prevent freeze-thaw cycles.

Precautions

gamma Tubulin Antibody is for research use only and not for use in diagnostic or therapeutic procedures.

gamma Tubulin Antibody - Protein Information**Name** Tubg2

Function Tubulin is the major constituent of microtubules, protein filaments consisting of alpha- and beta-tubulin heterodimers (By similarity). Gamma-tubulin is a key component of the

gamma-tubulin ring complex (gTuRC) which mediates microtubule nucleation (By similarity). The gTuRC regulates the minus-end nucleation of alpha-beta tubulin heterodimers that grow into microtubule protofilaments, a critical step in centrosome duplication and spindle formation (By similarity).

Cellular Location

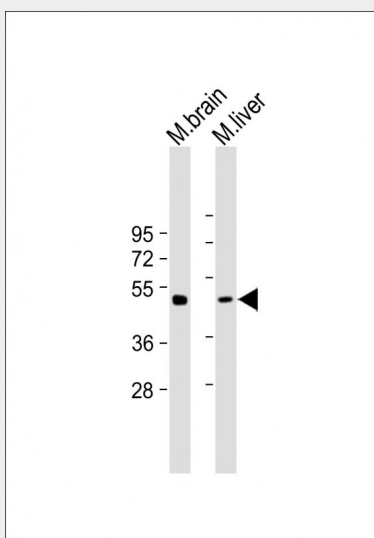
Cytoplasm, cytoskeleton, microtubule organizing center, centrosome. Note=Mainly localizes to the centrosome, but a fraction is found outside of the centrosome in the cytoplasm

gamma Tubulin Antibody - Protocols

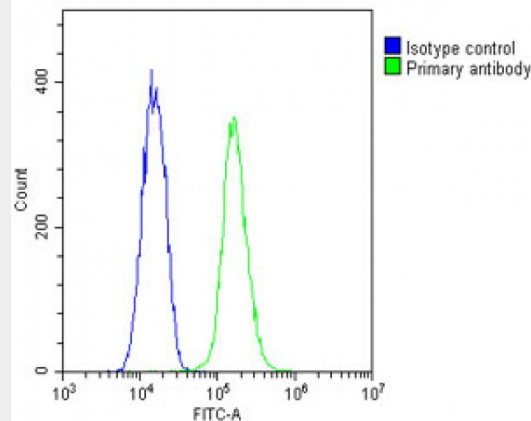
Provided below are standard protocols that you may find useful for product applications.

- [Western Blot](#)
- [Blocking Peptides](#)
- [Dot Blot](#)
- [Immunohistochemistry](#)
- [Immunofluorescence](#)
- [Immunoprecipitation](#)
- [Flow Cytometry](#)
- [Cell Culture](#)

gamma Tubulin Antibody - Images



All lanes : Anti-gamma Tubulin Antibody at 1:2000 dilution Lane 1: Mouse brain lysate Lane 2: Mouse liver lysate Lysates/proteins at 20 µg per lane. Secondary Goat Anti-Rabbit IgG, (H+L), Peroxidase conjugated at 1/10000 dilution. Predicted band size : 51 kDa Blocking/Dilution buffer: 5% NFD/MTBST.



Overlay histogram showing C2C12 cells stained with AP22339a (green line). The cells were fixed with 2% paraformaldehyde and then permeabilized with 90% methanol for 10 min. The cells were then incubated in 2% bovine serum albumin to block non-specific protein-protein interactions followed by the antibody (1:25 dilution) for 60 min at 37°C. The secondary antibody used was Goat-Anti-Rabbit IgG, DyLight® 488 Conjugated Highly Cross-Adsorbed at 1/200 dilution for 40 min at Room temperature. Isotype control antibody (blue line) was rabbit IgG1 (1 µg/1x10⁶ cells) used under the same conditions. Acquisition of >10,000 events was performed.

gamma Tubulin Antibody - Background

Tubulin is the major constituent of microtubules. The gamma chain is found at microtubule organizing centers (MTOC) such as the spindle poles or the centrosome. Pericentriolar matrix component that regulates alpha/beta chain minus-end nucleation, centrosome duplication and spindle formation (By similarity).

gamma Tubulin Antibody - References

Alvarado-Kristensson M., et al. Nat. Cell Biol. 11:1081-1092(2009).