

**BRAF V600E Antibody(C-Term)**  
**Purified Rabbit Polyclonal Antibody (Pab)**  
**Catalog # AP22342b****Specification**

---

**BRAF V600E Antibody(C-Term) - Product Information**

Application	WB, IHC-P,E
Primary Accession	<a href="#">P15056</a>
Other Accession	<a href="#">Q04982</a> , <a href="#">P34908</a> , <a href="#">P28028</a> , <a href="#">P00531</a> , <a href="#">A7E3S4</a> , <a href="#">P05625</a> , <a href="#">P04049</a> , <a href="#">Q99N57</a> , <a href="#">Q5R5M7</a> , <a href="#">P11345</a> , <a href="#">P00532</a> , <a href="#">P27966</a> , <a href="#">P10533</a>
Reactivity	Human
Predicted	Mouse, Rat, Chicken, Bovine
Host	Rabbit
Clonality	polyclonal
Isotype	Rabbit IgG

**BRAF V600E Antibody(C-Term) - Additional Information****Gene ID** 673**Other Names**

Serine/threonine-protein kinase B-raf, 2.7.11.1, Proto-oncogene B-Raf, p94, v-Raf murine sarcoma viral oncogene homolog B1, BRAF, BRAF1, RAFB1

**Target/Specificity**

This antibody is generated from a rabbit immunized with a KLH conjugated synthetic peptide between 576-606 amino acids from human.

**Dilution**

WB~~1:2000

IHC-P~~1:25

E~~Use at an assay dependent concentration.

**Format**

Purified polyclonal antibody supplied in PBS with 0.09% (W/V) sodium azide. This antibody is purified through a protein A column, followed by peptide affinity purification.

**Storage**

Maintain refrigerated at 2-8°C for up to 2 weeks. For long term storage store at -20°C in small aliquots to prevent freeze-thaw cycles.

**Precautions**

BRAF V600E Antibody(C-Term) is for research use only and not for use in diagnostic or therapeutic procedures.

**BRAF V600E Antibody(C-Term) - Protein Information**

**Name** BRAF ([HGNC:1097](#))

**Synonyms** BRAF1, RAFB1

**Function** Protein kinase involved in the transduction of mitogenic signals from the cell membrane to the nucleus (Probable). Phosphorylates MAP2K1, and thereby activates the MAP kinase signal transduction pathway (PubMed:[21441910](#), PubMed:[29433126](#)). Phosphorylates PFKFB2 (PubMed:[36402789](#)). May play a role in the postsynaptic responses of hippocampal neurons (PubMed:[1508179](#)).

**Cellular Location**

Nucleus. Cytoplasm. Cell membrane. Note=Colocalizes with RGS14 and RAF1 in both the cytoplasm and membranes.

**Tissue Location**

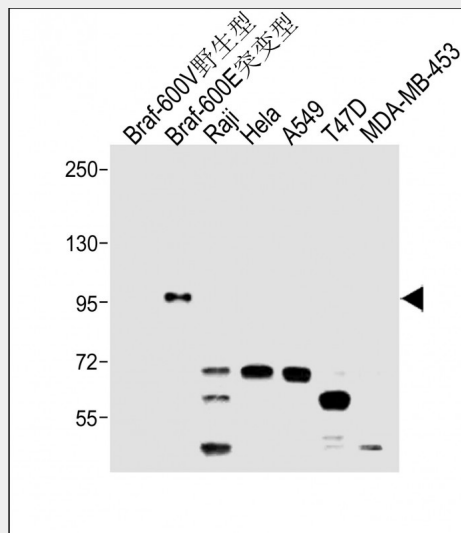
Brain and testis.

**BRAF V600E Antibody(C-Term) - Protocols**

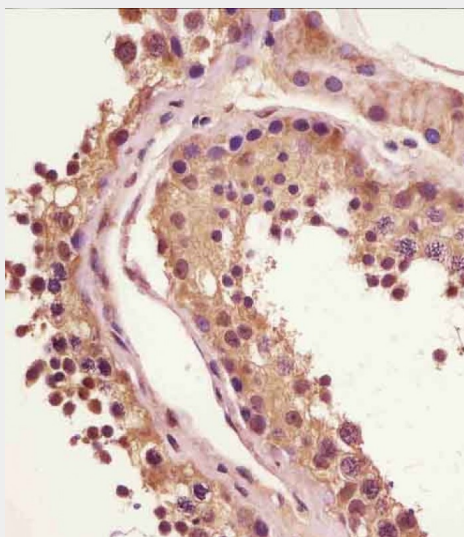
Provided below are standard protocols that you may find useful for product applications.

- [Western Blot](#)
- [Blocking Peptides](#)
- [Dot Blot](#)
- [Immunohistochemistry](#)
- [Immunofluorescence](#)
- [Immunoprecipitation](#)
- [Flow Cytometry](#)
- [Cell Culture](#)

**BRAF V600E Antibody(C-Term) - Images**



All lanes : Anti-BRAF Antibody(C-Term) at 1:2000 dilution Lane 1: Braf-600V -wild type Lane 2: Braf-600E -mutation Lane 3: Raji whole cell lysate Lane 4: HeLa whole cell lysate Lane 5: A549 whole cell lysate Lane 6: T47D whole cell lysate Lane 7: MDA-MB-453 whole cell lysate Lysates/proteins at 10 µg per lane. Secondary Goat Anti-Rabbit IgG, (H+L), Peroxidase conjugated at 1/10000 dilution. Predicted band size : 84 kDa Blocking/Dilution buffer: 5% NFDM/TBST.



AP22342b staining BRAF in human testis tissue sections by Immunohistochemistry (IHC-P - paraformaldehyde-fixed, paraffin-embedded sections). Tissue was fixed with formaldehyde and blocked with 3% BSA for 0.5 hour at room temperature; antigen retrieval was by heat mediation with a citrate buffer (pH6). Samples were incubated with primary antibody (1/25) for 1 hour at 37°C. A undiluted biotinylated goat polyvalent antibody was used as the secondary antibody.

#### **BRAF V600E Antibody(C-Term) - Background**

Protein kinase involved in the transduction of mitogenic signals from the cell membrane to the nucleus. May play a role in the postsynaptic responses of hippocampal neuron. Phosphorylates MAP2K1, and thereby contributes to the MAP kinase signal transduction pathway.

#### **BRAF V600E Antibody(C-Term) - References**

Stephens R.M., et al. Mol. Cell. Biol. 12:3733-3742(1992).  
Albert S., et al. Submitted (JAN-2004) to the EMBL/GenBank/DDBJ databases.  
Scherer S.W., et al. Science 300:767-772(2003).  
Hillier L.W., et al. Nature 424:157-164(2003).  
Eychene A., et al. Oncogene 7:1657-1660(1992).