

**DLL4 Antibody**  
**Purified Rabbit Polyclonal Antibody (Pab)**  
**Catalog # AP22346a****Specification**

---

**DLL4 Antibody - Product Information**

Application	WB,E
Primary Accession	<a href="#">O9NR61</a>
Reactivity	Mouse, Rat
Predicted	Human
Host	Rabbit
Clonality	polyclonal
Isotype	Rabbit IgG
Calculated MW	74605

**DLL4 Antibody - Additional Information****Gene ID** 54567**Other Names**

Delta-like protein 4, Drosophila Delta homolog 4, Delta4, DLL4

**Target/Specificity**

This DLL4 antibody is generated from a rabbit immunized with a recombinant protein from the human region of human DLL4.

**Dilution**

WB~~1:2000

E~~Use at an assay dependent concentration.

**Format**

Purified polyclonal antibody supplied in PBS with 0.09% (W/V) sodium azide. This antibody is purified through a protein A column, followed by peptide affinity purification.

**Storage**

Maintain refrigerated at 2-8°C for up to 2 weeks. For long term storage store at -20°C in small aliquots to prevent freeze-thaw cycles.

**Precautions**

DLL4 Antibody is for research use only and not for use in diagnostic or therapeutic procedures.

**DLL4 Antibody - Protein Information****Name** DLL4

**Function** Involved in the Notch signaling pathway as Notch ligand (PubMed:[11134954](#)). Activates NOTCH1 and NOTCH4. Involved in angiogenesis; negatively regulates endothelial cell proliferation and migration and angiogenic sprouting (PubMed:[20616313](#)). Essential for retinal progenitor

proliferation. Required for suppressing rod fates in late retinal progenitors as well as for proper generation of other retinal cell types (By similarity). During spinal cord neurogenesis, inhibits V2a interneuron fate (PubMed:[17728344](#)).

#### Cellular Location

Cell membrane; Single-pass type I membrane protein

#### Tissue Location

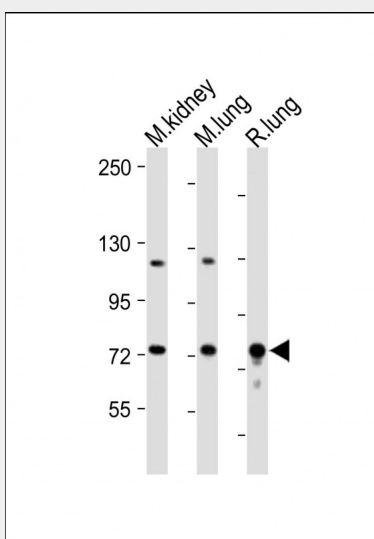
Expressed in vascular endothelium.

### DLL4 Antibody - Protocols

Provided below are standard protocols that you may find useful for product applications.

- [Western Blot](#)
- [Blocking Peptides](#)
- [Dot Blot](#)
- [Immunohistochemistry](#)
- [Immunofluorescence](#)
- [Immunoprecipitation](#)
- [Flow Cytometry](#)
- [Cell Culture](#)

### DLL4 Antibody - Images



All lanes : Anti-DLL4 Antibody at 1:2000 dilution Lane 1: Mouse kidney lysate Lane 2: Mouse lung lysate Lane 3: Rat lung lysate Lysates/proteins at 20 µg per lane. Secondary Goat Anti-Rabbit IgG, (H+L), Peroxidase conjugated at 1/10000 dilution. Predicted band size : 75 kDa Blocking/Dilution buffer: 5% NFDN/TBST.

### DLL4 Antibody - Background

Involved in the Notch signaling pathway as Notch ligand. Activates NOTCH1 and NOTCH4. Involved in angiogenesis; negatively regulates endothelial cell proliferation and migration and angiogenic sprouting. Essential for retinal progenitor proliferation is required for suppressing rod fates in late retinal progenitors as well as for proper generation of other retinal cell types. During spinal cord neurogenesis, inhibits V2a interneuron fate.

**DLL4 Antibody - References**

Shutter J.R.,et al.Genes Dev. 14:1313-1318(2000).  
Sakano S.,et al.Submitted (JAN-2000) to the EMBL/GenBank/DDBJ databases.  
Yoneya T.,et al.J. Biochem. 129:27-34(2001).  
Clark H.F.,et al.Genome Res. 13:2265-2270(2003).  
Zhang Z.,et al.Protein Sci. 13:2819-2824(2004).